

Canal Basin Park

Framework Plan

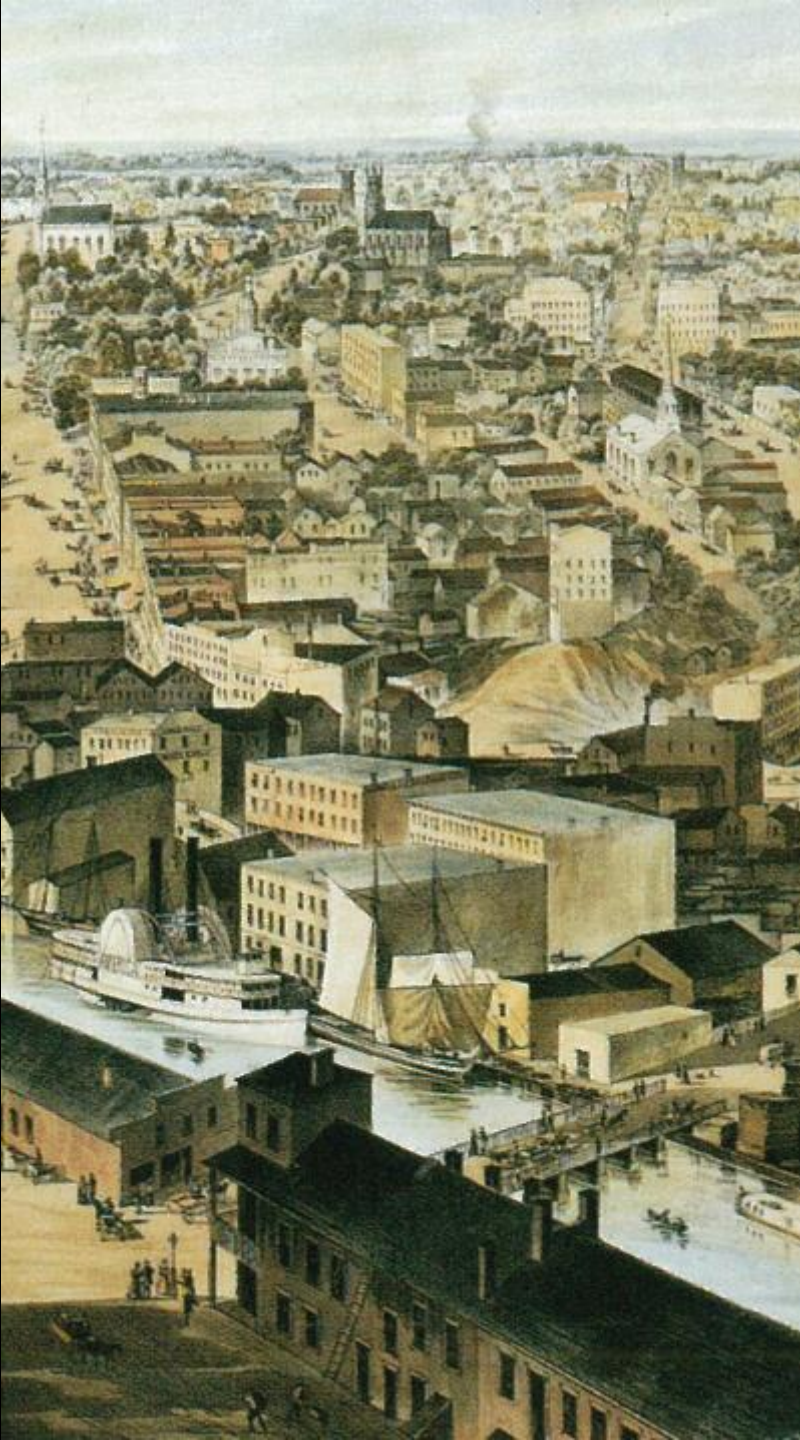
November 2015

Project Manager:
City of Cleveland

Principal Partner:
Canalway Partners

Project Partners:
Cuyahoga County
Cleveland Metroparks
Downtown Cleveland Alliance
Ohio & Erie Canalway





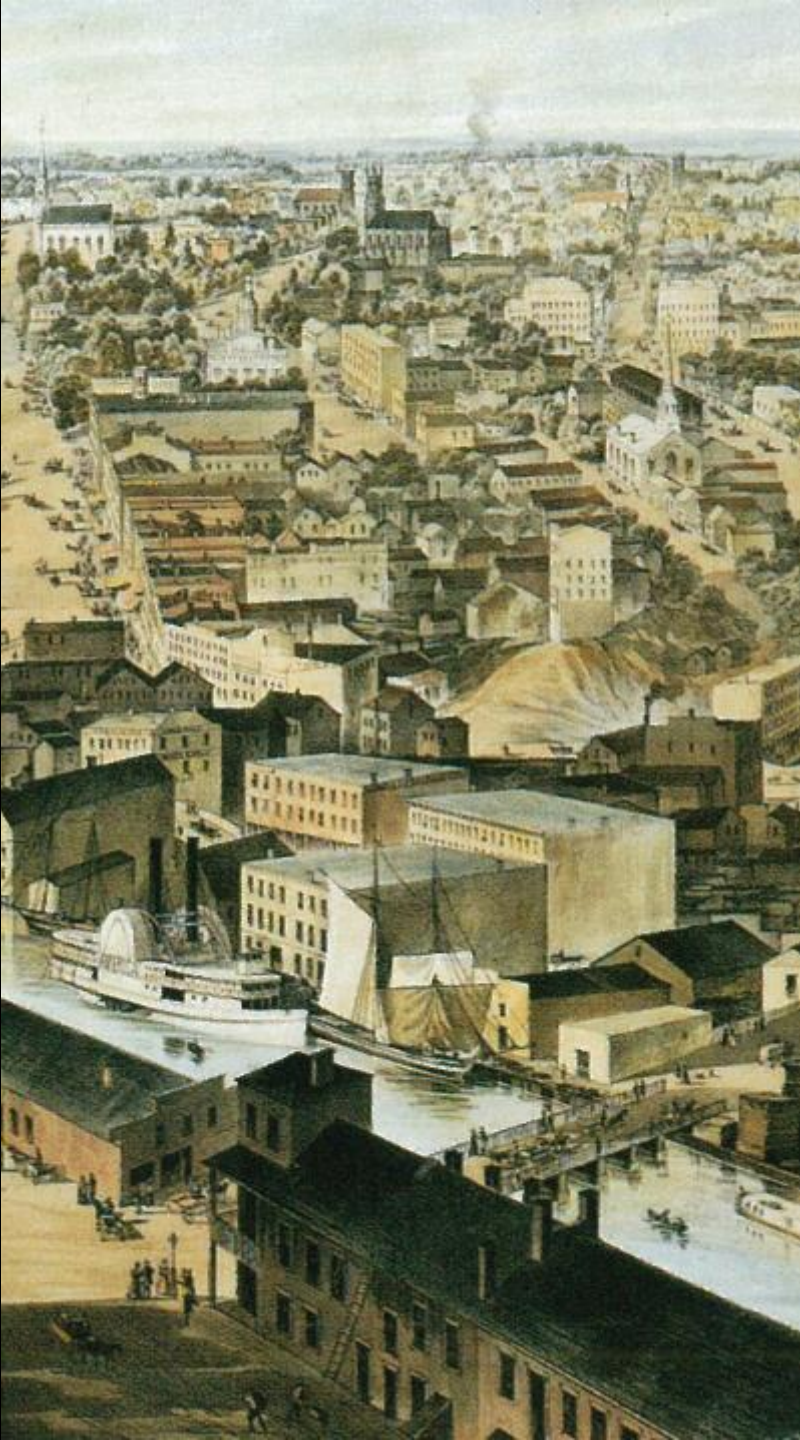
25 Years of Planning

Spanning a period of 25 years, Canal Basin Park has benefitted from the visions of an array of local and internationally renowned landscape architects, including:

- James Corner Field Operations - Stan Allen (Public Square)
- Skidmore, Owings & Merrill LLP - Philip Enquist (Millennium Park, Chicago)
- Wm. Behnke & Associates (led first local planning effort)

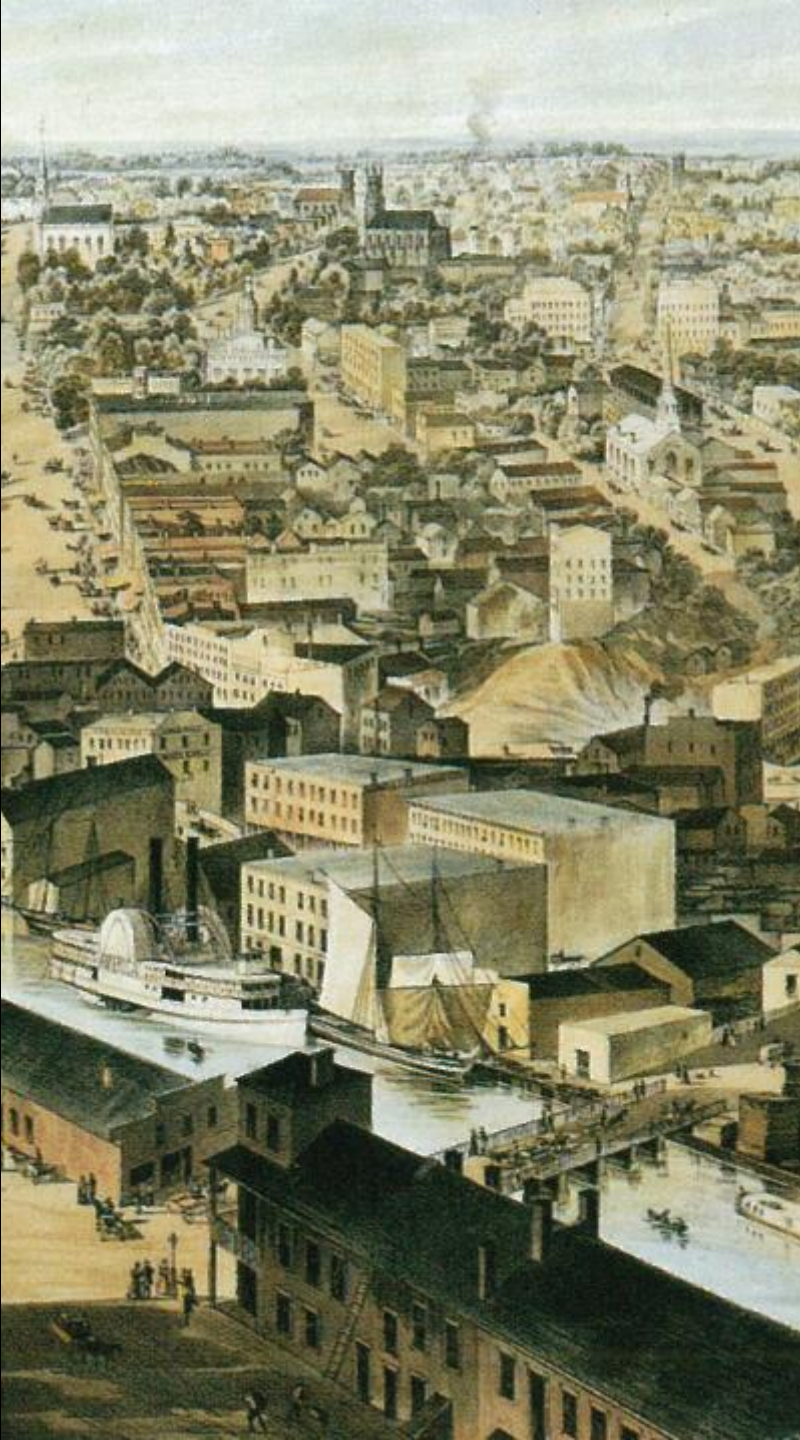
Our planning process worked to synthesize the best elements of these previous efforts.





Schedule

Steering Committee Meeting	January 24, 2014
Stakeholder Visioning Session	February 7, 2014
Steering Committee Review of Framework & Initial Concepts	February 28, 2014
Steering Committee	October 16, 2014
Stakeholder Meeting	October 29th, 2014
City of Cleveland Staff Review	November 25th, 2014
Steering Committee Presentation	April 2015
Stakeholder Presentations	Summer 2015
City Planning Commission	November 2015



Stakeholders

Steering Committee

- City of Cleveland
- Cuyahoga County
- Cleveland Metroparks
- Downtown Cleveland Alliance
- Cuyahoga Valley National Park
- Western Reserve Historical Society
- Cleveland Cuyahoga Port Authority

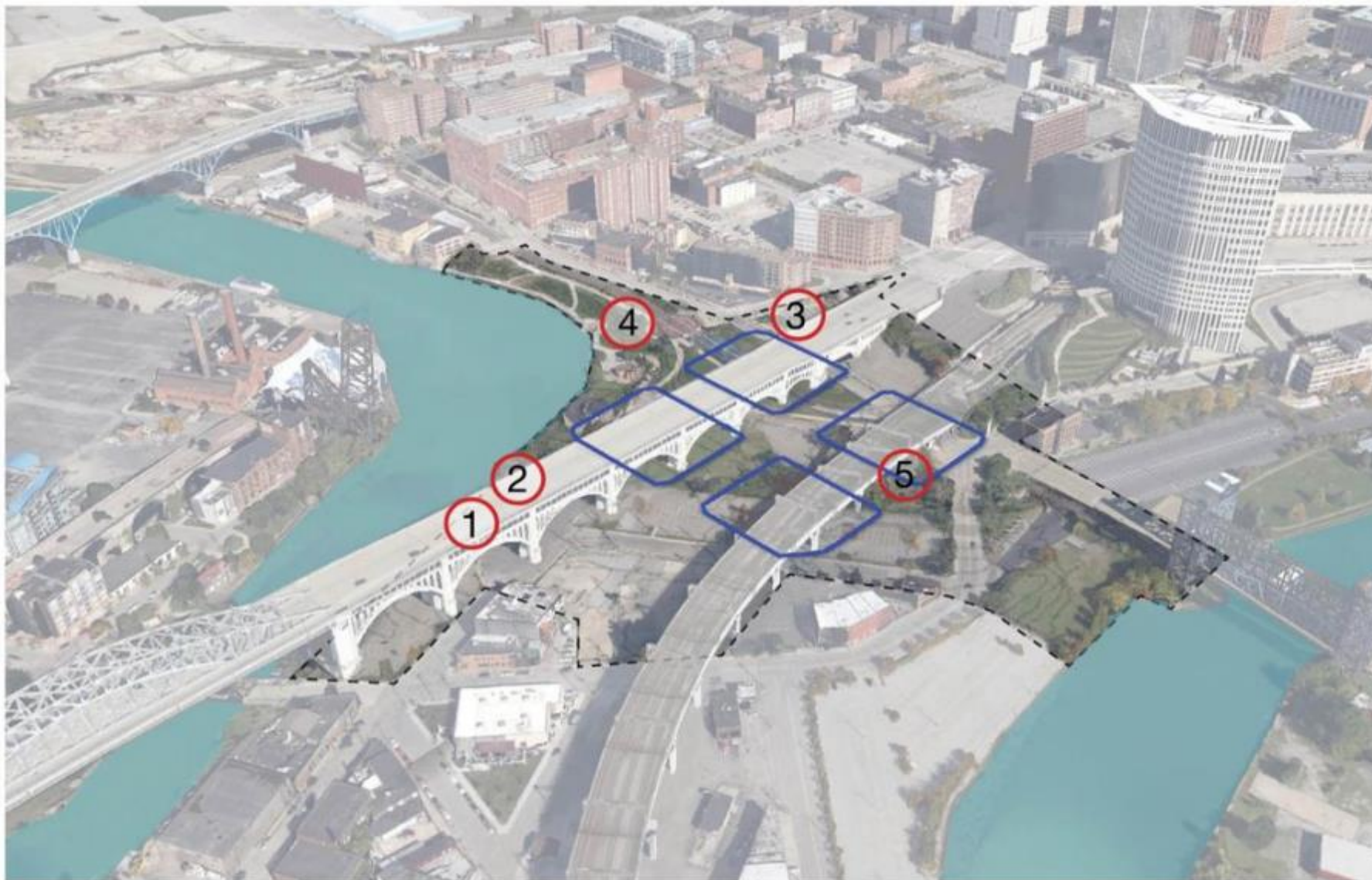
Local Stakeholders

- Historic Warehouse District
- ArcelorMittal
- Automatic Stamp Products
- Catanese Classic Seafood
- Cargill
- Cleveland Rowing Foundation
- CMHA
- Emerald Dock
- Flats Forward
- Flats East Bank
- Fairmount Properties
- Flats Railroad
- Flat Iron Cafe
- Forest City
- GCRTA
- Government Services Administration
- Hanna Chartwell
- LAND studio
- Nautica
- National Park Service
- NEORS
- Ohio City Bicycle Co-op
- Rotary of Cleveland
- Samsel Supply
- Sherwin Williams
- Trust for Public Land

Canal Basin Park Location



Canal Basin Park will create 20 acres of public green space

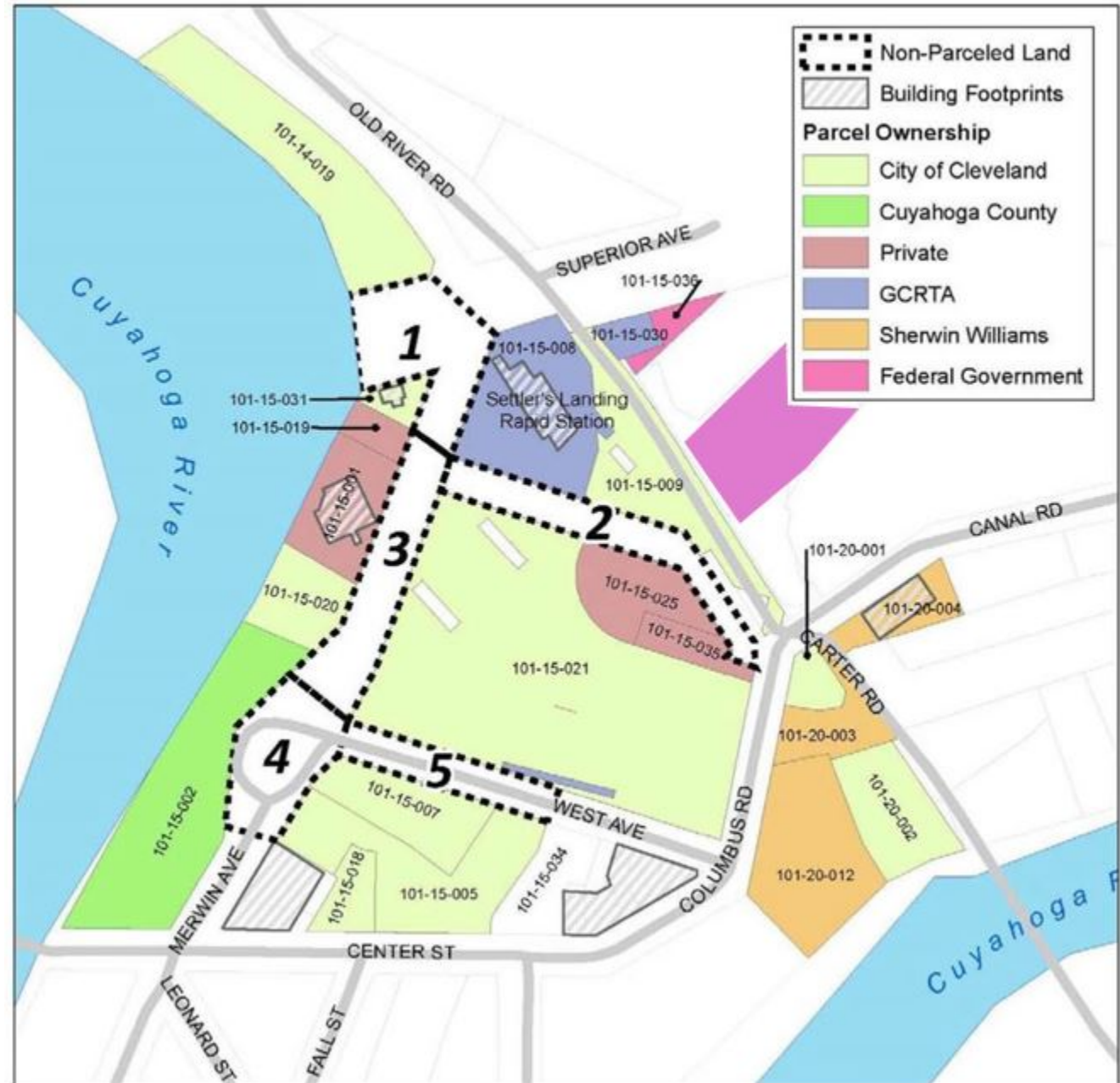


- ① Heritage Park I ② Lock 44 Park ③ Viaduct Gateway Park ④ Settler's Landing ⑤ Outline of Public Square

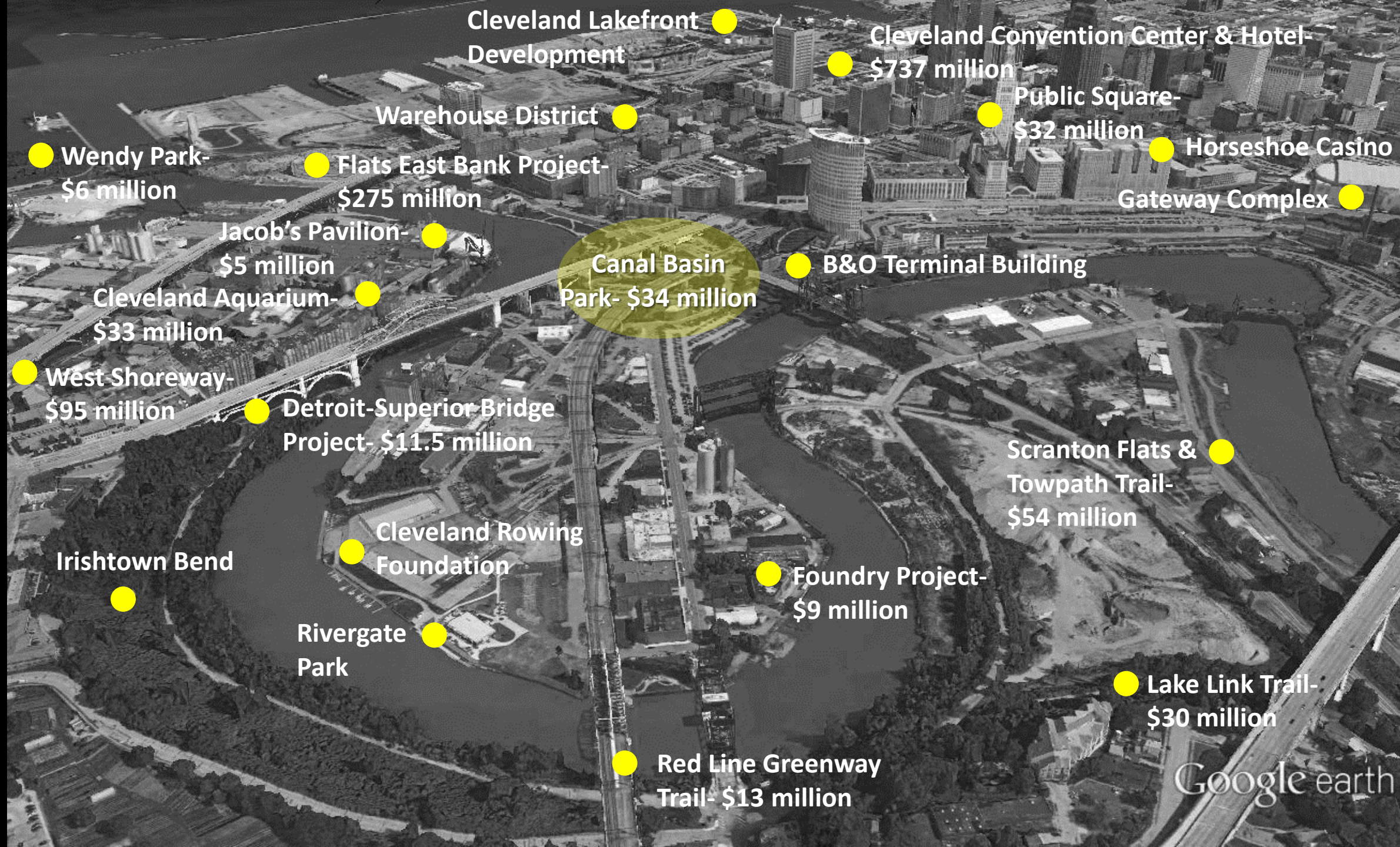
Parcel Ownership

Canal Basin Park is a significant opportunity to create 20 acres of public green space.

Ninety percent (90%) of the land is owned by public agencies such as the City of Cleveland, GCRTA, Cleveland Metroparks and NEORS.



Surrounding Investment



Canal Basin Park is flanked by two National Register Historic Districts

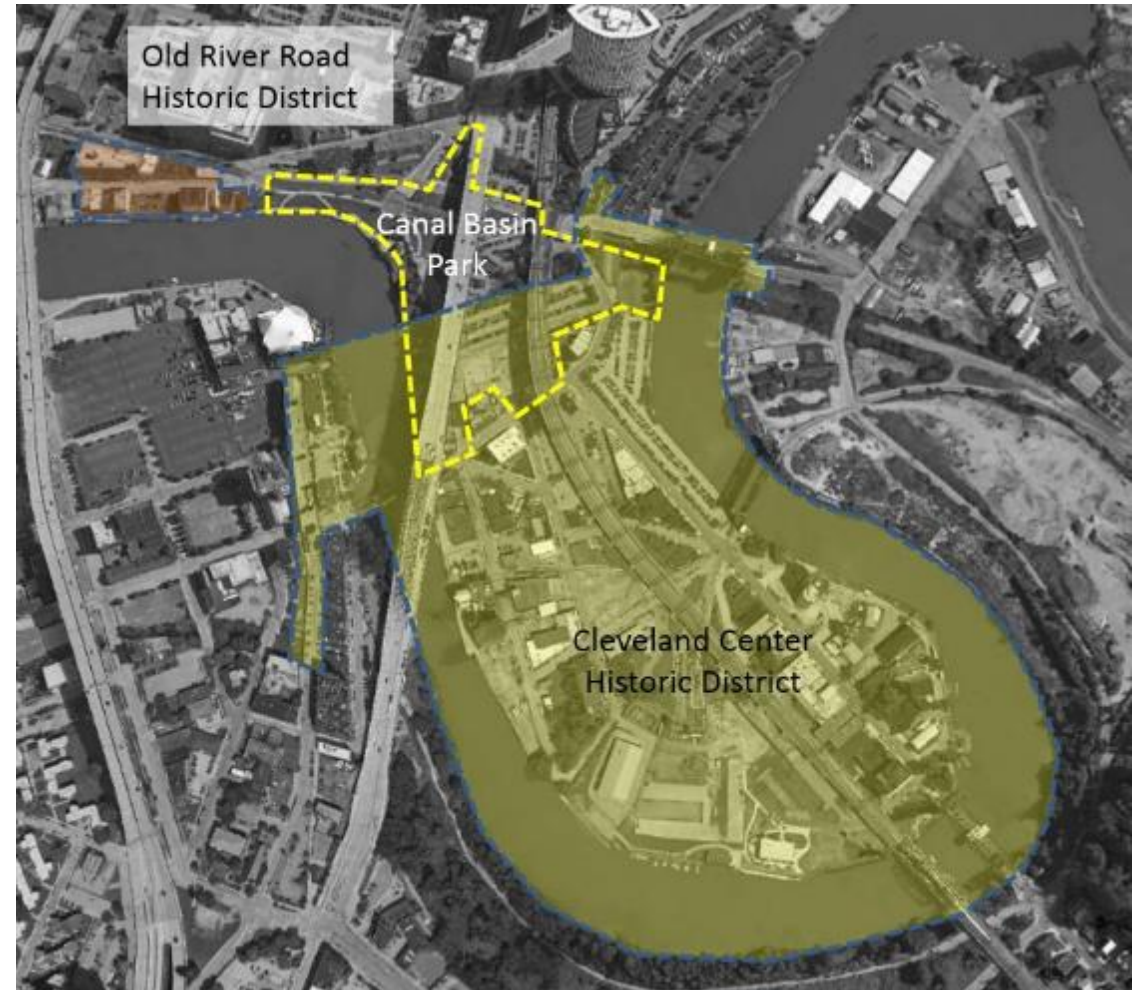
Old River Road Historic District

- 13 contributing structures

Cleveland Centre Historic District

- 46 contributing structures
- 1 already received state historic tax credits
- Important developments include the B&O Terminal Building and “The Foundry” youth rowing center

59 nearby buildings are now eligible for historic preservation tax credits

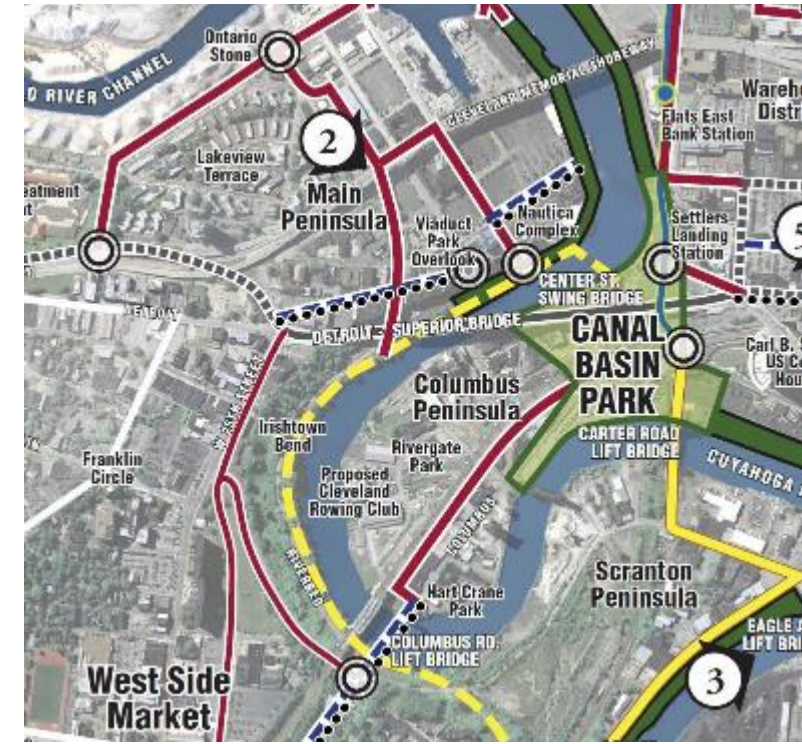


All Roads and Trails Lead to Canal Basin Park: Crowning the 101-mile Journey

The Towpath Trail alignment wraps the Cuyahoga River's edge. Additional connector trails expand the visitor experience by connecting to Cleveland's growing roster of visitor destinations.

Canal Basin Park serves as the “hub” for this network of roads and trails. Packaging this experience as the Canal Basin District would occupy this northernmost reach of Cleveland's Flats.

Since this stretch of the river valley is redolent of so many of Cleveland's most important and historic moments, the Canal Basin District will provide an enjoyable and interesting way for visitors to walk, bike or paddle along its perimeter and interact with a unique blend of nature and history, while learning Cleveland's history.



The Towpath Trail Connects Cleveland

Supports Connecting Cleveland 2020 Citywide Plan

- 90% of Clevelanders will be within a 10-minute bike ride of the Towpath & its connector trails
- The Towpath is ADA accessible

Recreation & open space goals

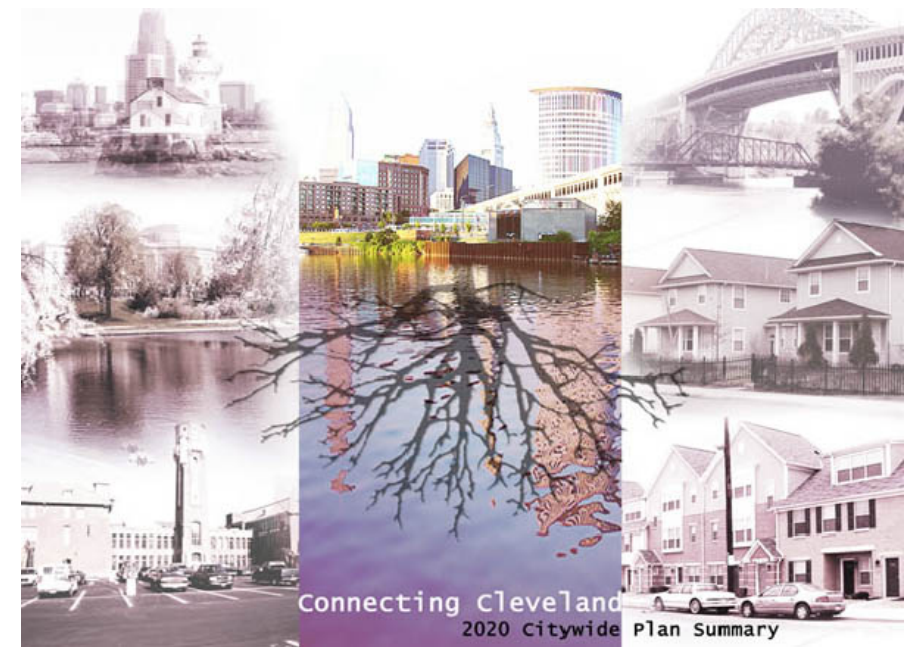
- Waterfront access
- Connectivity
- Bikeways

Important neighborhood connections

- Downtown
- Tremont
- Ohio City
- Old Brooklyn
- Slavic Village

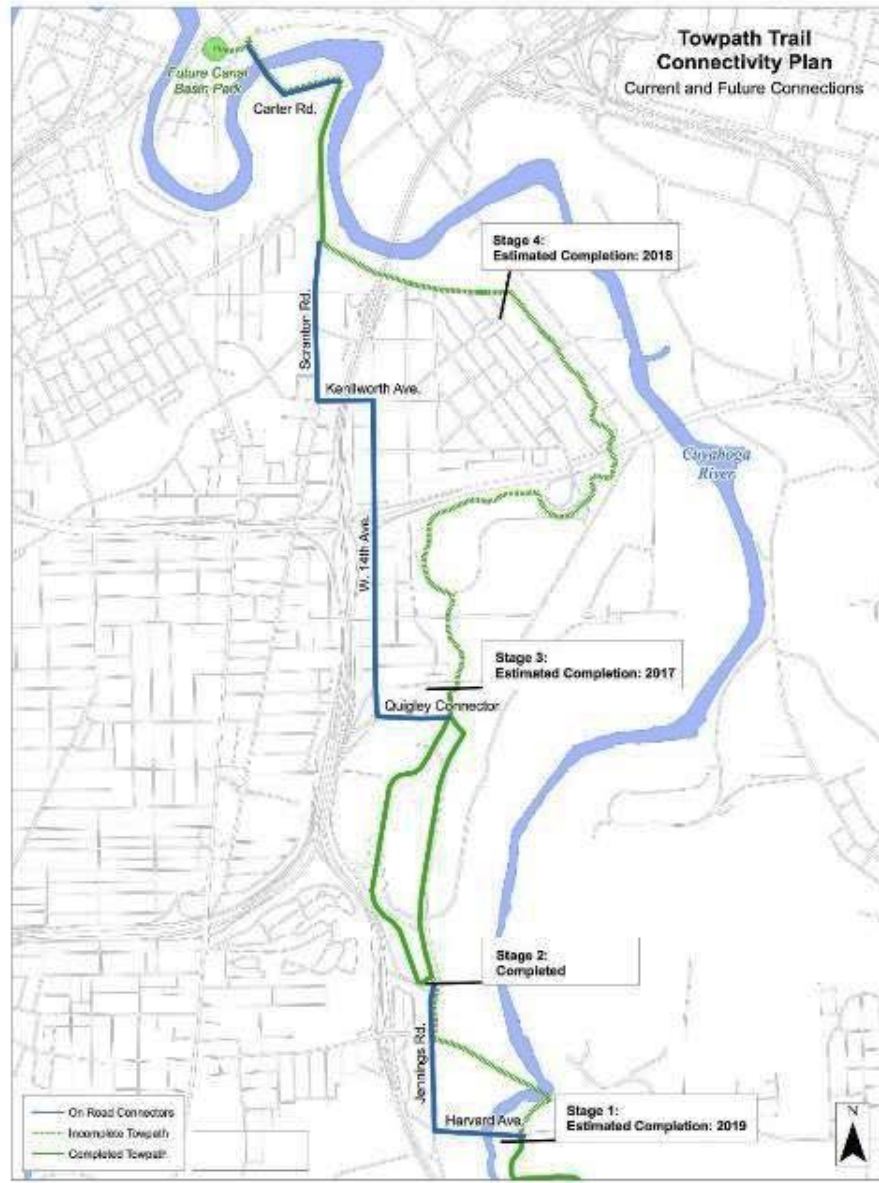
Access to public housing

- Tremont Pointe Apartments
- Riverview Towers
- Lakeview Estates



Towpath Trail: \$54 Million Investment in Cleveland

Towpath Trail Investment



Location

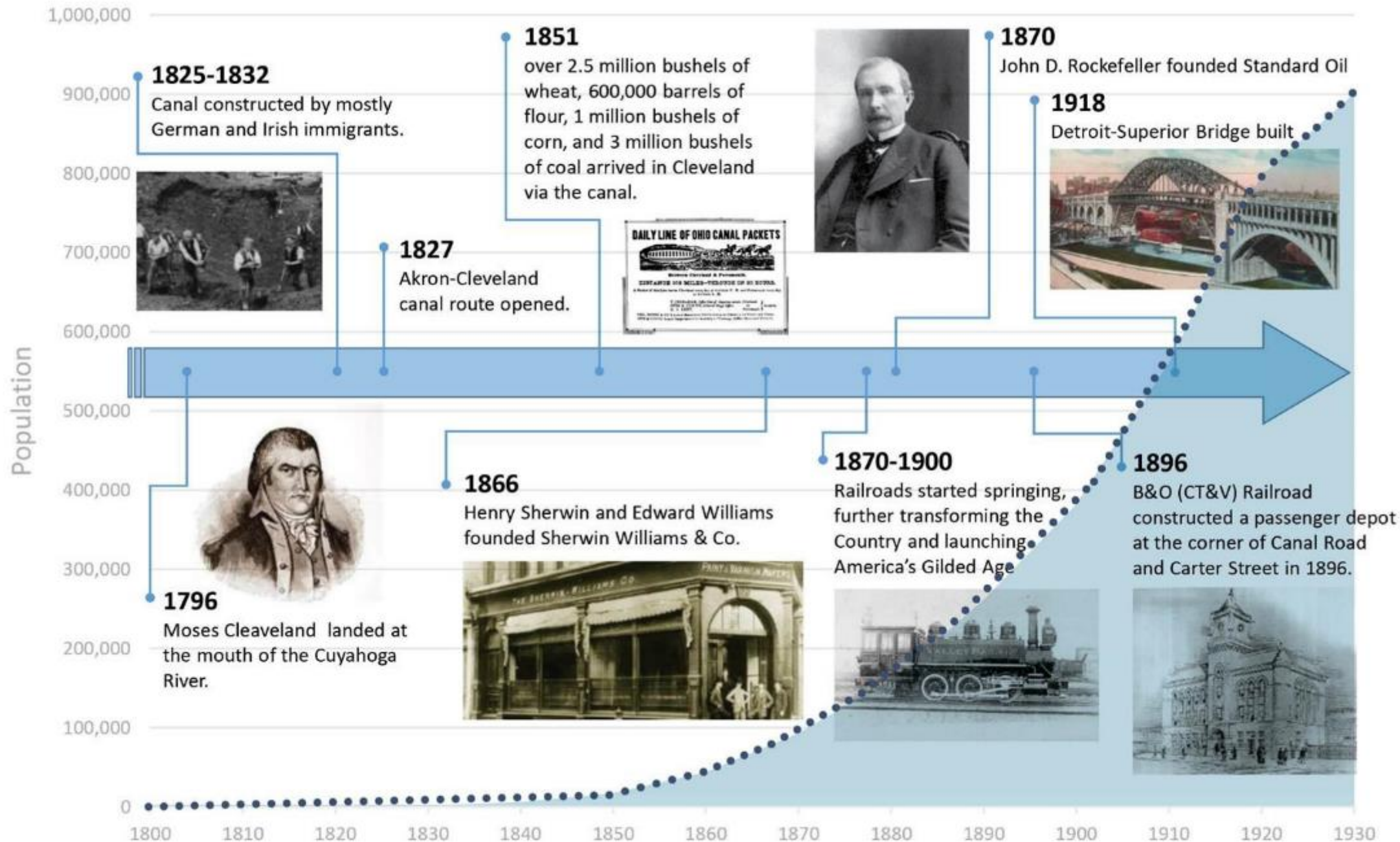
In the Canal Era, Cleveland's Canal Basin was the pivot point between New York City and New Orleans.

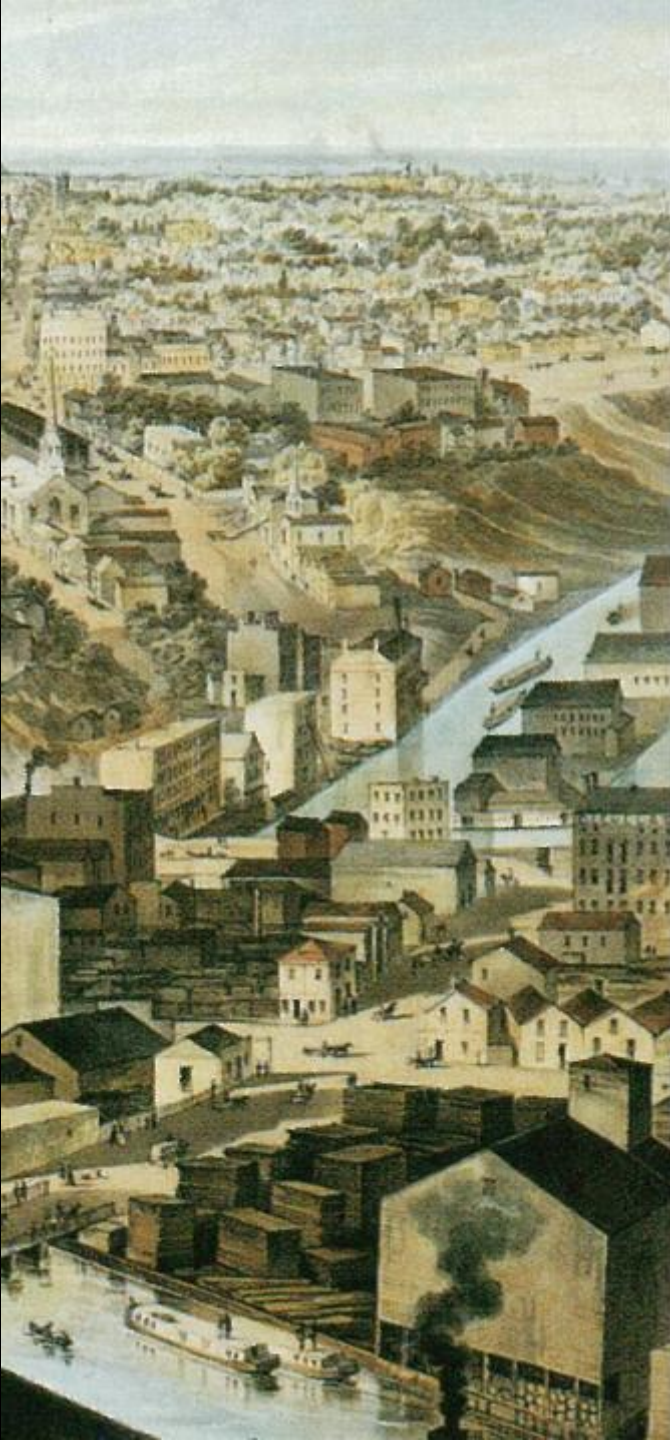


Historic Canal Basin



1874





A Contagion of Genius

In the era of canal and early rail transport, multiple paths converged in Cleveland at Canal Basin – where the Ohio & Erie Canal entered the Cuyahoga River. It became the pivot point of the Nation's first transcontinental transportation system that connected New York City, the Great Lakes and the Gulf of Mexico – launching our region into a leadership role in America's Gilded Age...

"Nineteenth-century Cleveland... was an example of a strange but persistent phenomenon in history: the sudden eruption of multiple genius at a specific time and place. It happened in Periclean Athens, in Medicean Florence, in Elizabethan England and in Jefferson's Williamsburg.

When it strikes, it roars through events like a forest fire with everything conspiring to feed the flame... Historians have offered no convincing reasons as to why it happens but they argue persuasively as to how it happens: contagion."

An excerpt from Henry Flagler, by David Leon Chandler (1986), a biography of John D. Rockefeller's business partner

Making History

A National Project -- Opportunity Knocks

Canal Basin Park is the only place in America where three national heritage designations overlap -- a **National Heritage Area**, an **America's Byway**, and an **American Heritage River**.



Each designation recognizes unique aspects of our region's history and its role and impact on the nation. Both the National Heritage Area and America's Byway share the stories evolving from the construction of the Ohio & Erie Canal as America's first national infrastructure project.



The Canal set the stage for the Cuyahoga River valley to host the dynamic period of unprecedented industrial growth in America -- the Gilded Age (1870-1930). In Cleveland, it heralded the business acumen of Rockefeller and Flagler, the inventiveness of Sherwin and Williams. For Cleveland, it built more than wealth; it built a civilization.

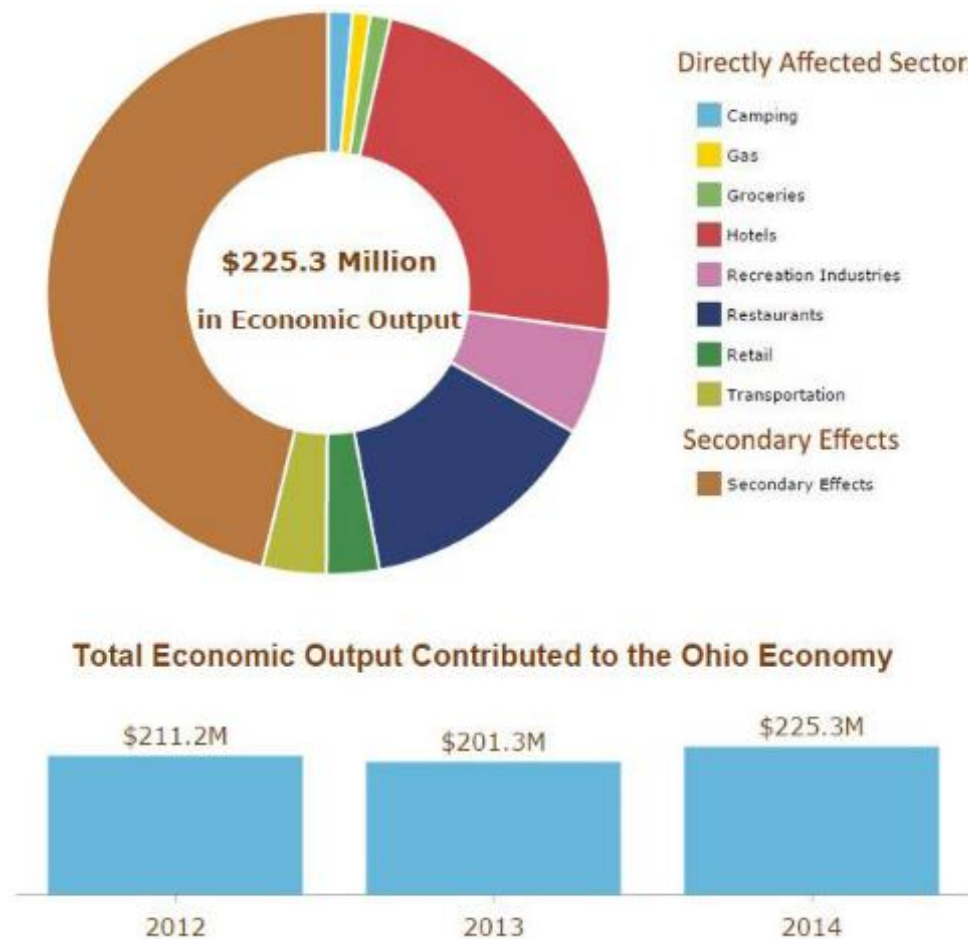
The American Heritage River symbolizes the "comeback" story of the Cuyahoga, an urban river that continues to serve industrial uses while making strides to reclaim its role as an environmental and recreational asset.

Canal Basin Park will introduce a new model park within the National Park Service's National Heritage Area program, one that offers visitor information and orientation and interpretation through a unique mix of modern technologies and public art.

Economic Impact of National Park Service Sites in Ohio

The Ohio & Erie Canalway is a National Heritage Area, an affiliated unit of the National Park Service.

In 2014, park visitors spent an estimated \$155 Million in local gateway regions while visiting NPS lands in Ohio. These expenditures supported a total of 2.7 Thousand jobs, \$79.8 Million in labor income, \$126.9 Million in value added, and \$225.3 Million in economic output in the Ohio economy.



Craig Kenkel, Superintendent of CVNP and
John Jarvis, Director of NPS



Mission

Canal Basin Park will be a year-round public place that brings together history, neighborhoods, and the community.

The plan will consider how to activate a public space that creates sensory excitement for multiple types of users - day and night, summer and winter as it will:

- Educate us about our history
- Embrace the Cuyahoga River
- Reclaim the remnants of industry
- Unify the Flats
- Celebrate the terminus of the 101-mile Towpath Trail
- Leverage the multiple national designations in its construction and operation
- Provide a model for the National Park Service's National Heritage Area program



Credit: Dan Morgan

Vision

Canal Basin Park is a 20-acre site where the historic Ohio & Erie Canal entered the Cuyahoga River, below the Veterans Memorial Bridge. Located at the intersection of the Towpath Trail, the America's Byway and the Cuyahoga American Heritage River, this downtown Park will serve as the northern gateway for the Ohio & Erie Canalway National Heritage Area - where visitors can actively explore the significant contributions of Cleveland and the region to the nation.

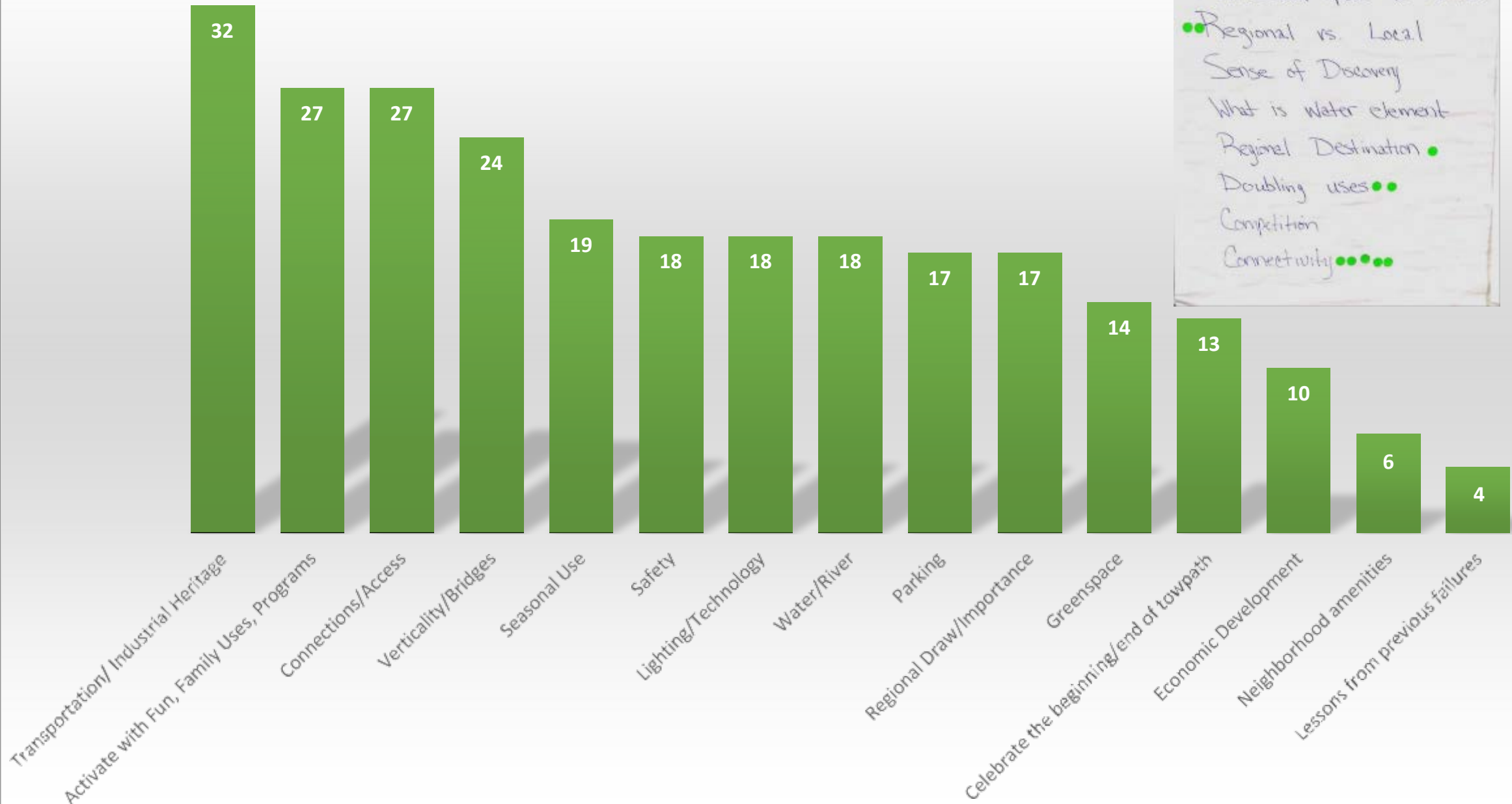
The Park will celebrate the Canal Basin itself with an animated water feature that commemorates the canal while providing an element that invites interaction. The element can be multi-dimensional, incorporating opportunities for interpretation and performance.

The place-making exercise will strive to create a Park that offers an inviting gathering place during the daytime and an exciting nighttime destination. The design will invite exploration and provide moments of discovery.

The design incorporates purposeful flexibility utilizing the latest innovations in lighting, video and sound within a setting that is topographically sculpted to establish a series of "outdoor rooms" that can act as galleries for art and interpretive exhibits.

Canal Basin Park will extend connections to the Cuyahoga River and its collection of unique 19th/20th century bridges through dramatic lighting, design and programming, and will fully integrate the Veterans Memorial Bridge.

Stakeholder Feedback



Emerging Themes



1. Water



2. Greenspace



3. Industrial Heritage



4. Connections



5. Verticality/Bridges



6. Placemaking



7. Hub – Start/End



8. Technology



9. Active Use

Water -- Interactive



Water – Interactive

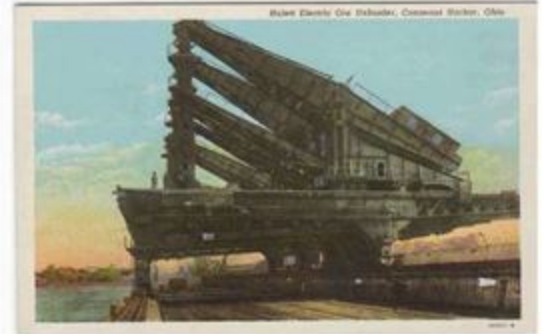
Water presents the opportunity to tell the story of the Canal and the Cuyahoga, as well as create opportunities for interaction.

Greenspace/Open Space



Greenspace/Open Space

Canal Basin Park should feature green space at its core. It needs to juxtapose the industrial setting of steel, stone and concrete with landscape features that create places for passive use and visual character.



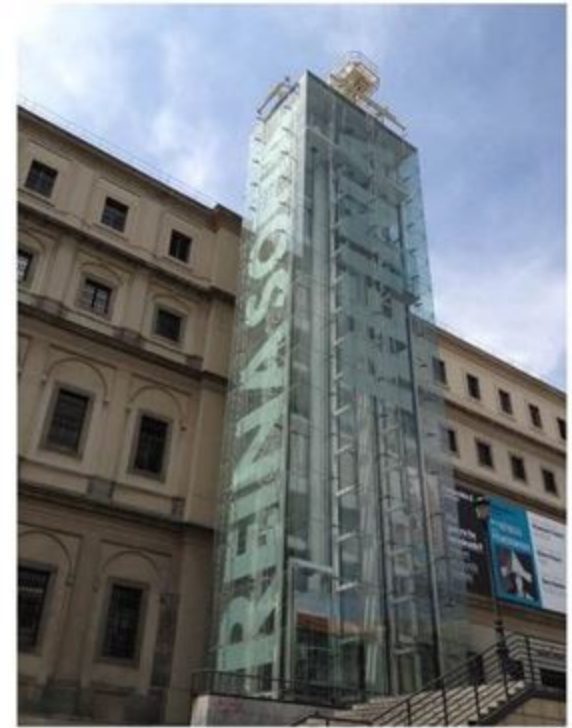
Industrial Heritage

The Ohio and Erie Canal was the nation's first transcontinental shipping route, bringing goods and manufacturers to Cleveland, leading to explosive growth. We will celebrate the industrial heritage of Cleveland at Canal Basin Park.



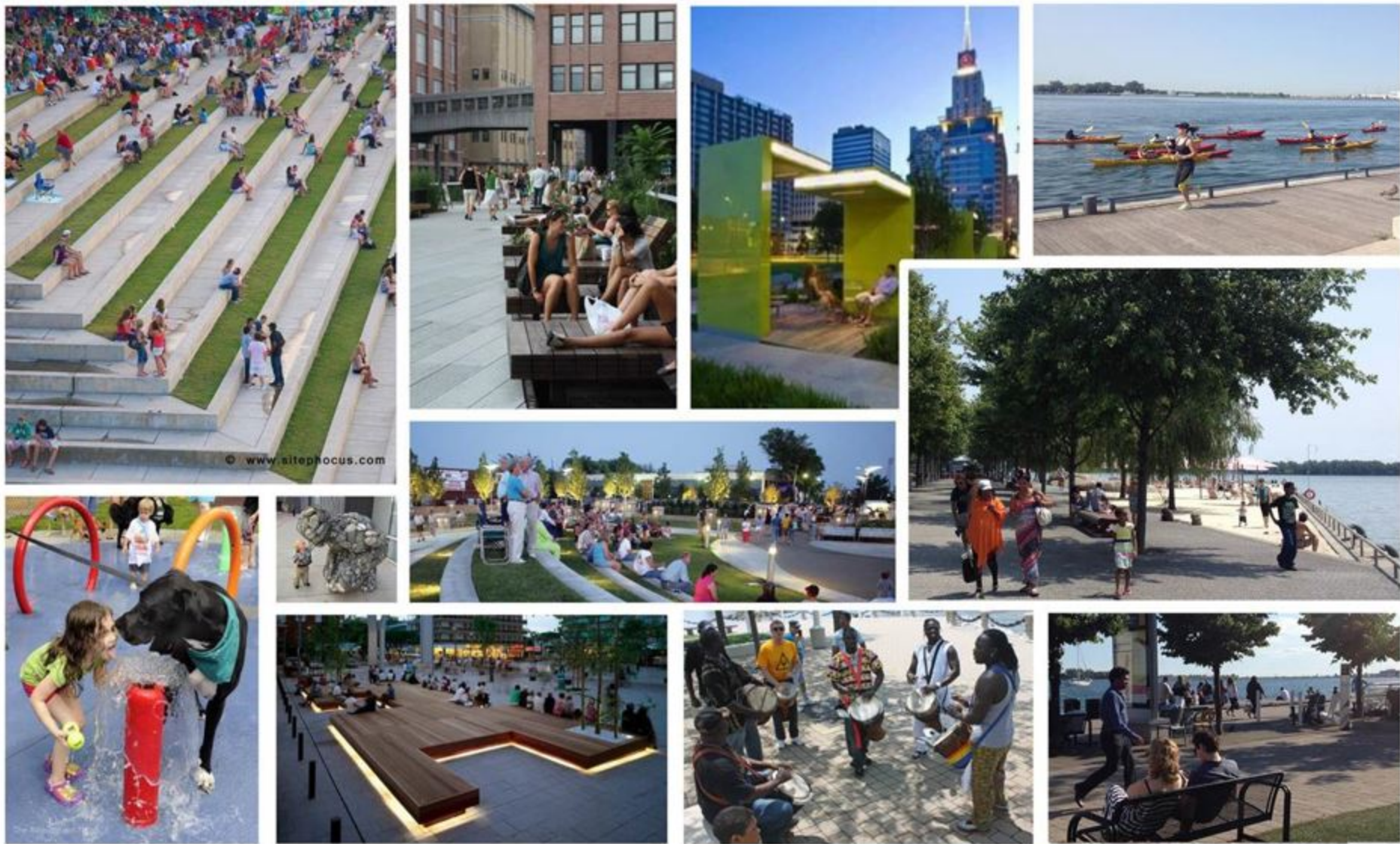
Connections

Canal Basin Park will be central hub of Cleveland's emerging trail system, connecting users to Downtown, the lakefront, Cuyahoga Valley National Park and beyond.



Verticality / Bridges

One of the unique visible characteristics of the Flats and Cleveland is the bridges that crisscross the river. Built from steel, stone, and concrete these bridges are powerful symbols of Cleveland's industrial heritage.



Placemaking

While the interpretation and celebration of Cleveland and the Canal are important, Canal Basin Park must also serve as a great public place for residents and visitors.



Active Use

A successful park needs to be able to provide users with a variety of active and passive activities. Programming and interactive elements will be integrated into Canal Basin to allow for a variety of day and nighttime uses throughout the year.



Technology / Lighting

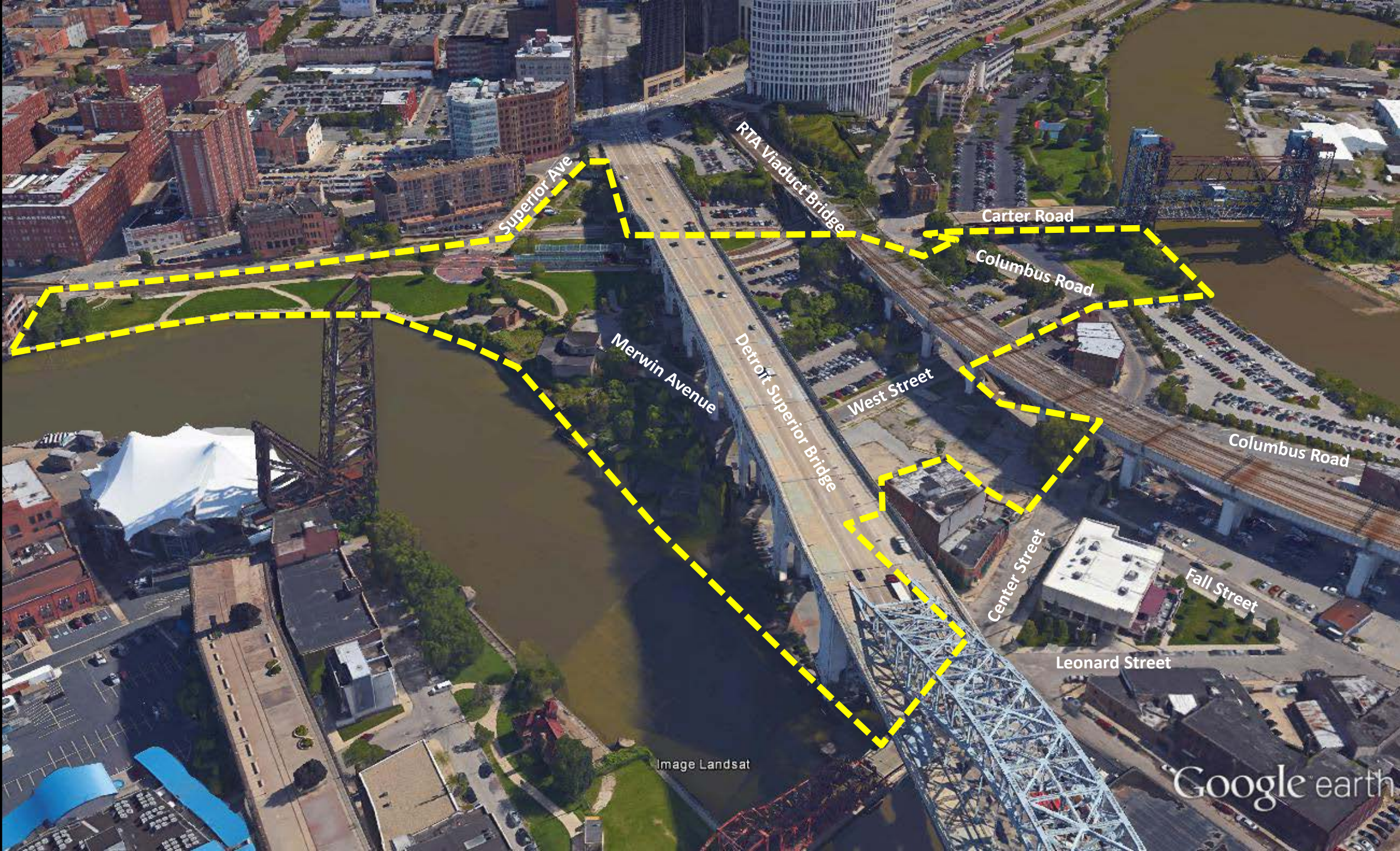
At the turn of the century Cleveland was on the edge of a technological revolution. This park will continue to celebrate technology as a way to create a vibrant, entertaining and dynamic place.



Hub -- Start / End

Canal Basin Park will be the beginning of the 101-mile Towpath Trail and Downtown's gateway to the Ohio & Erie Canalway National Heritage Area. A place where history and people come together.

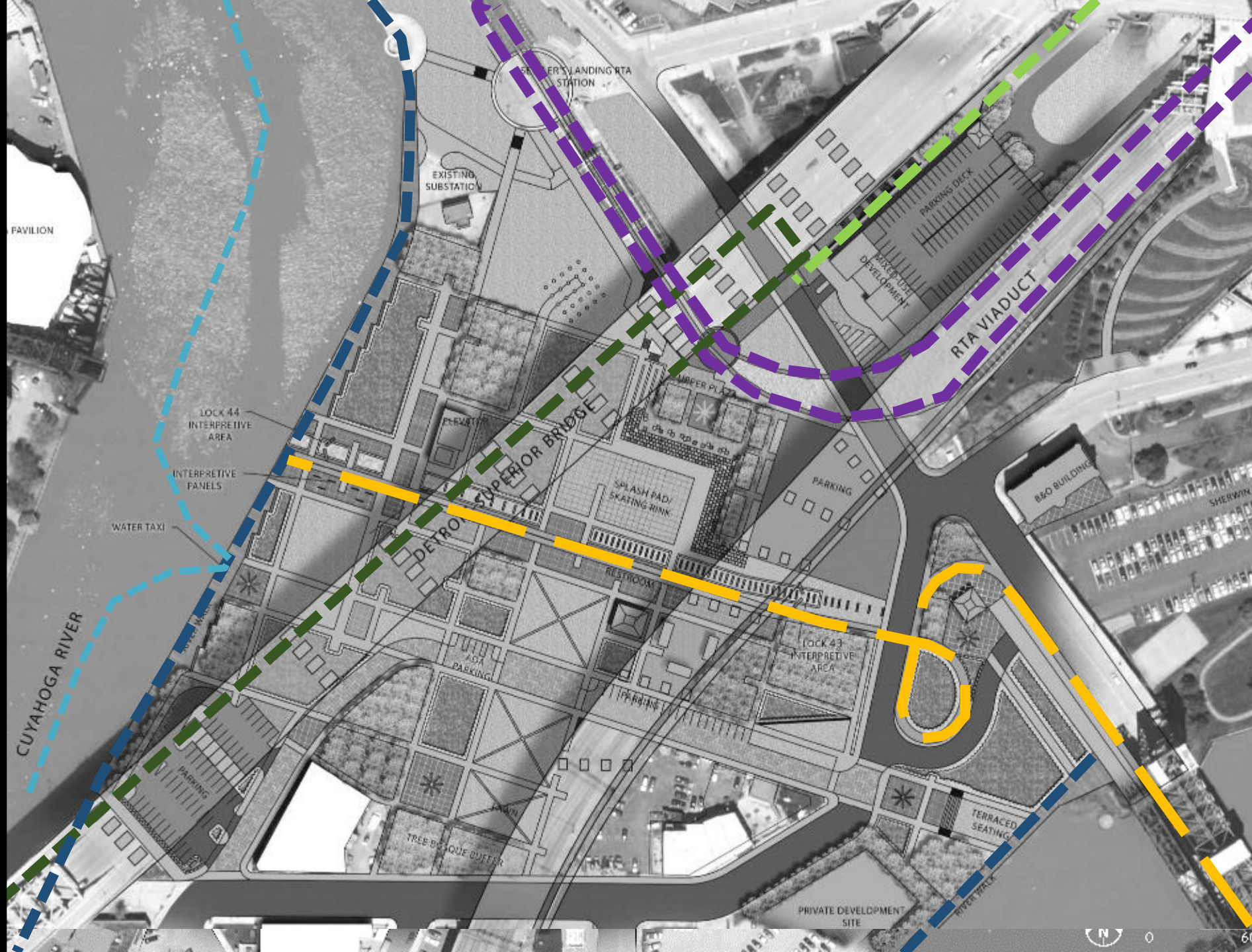
Canal Basin Park



Framework Plan

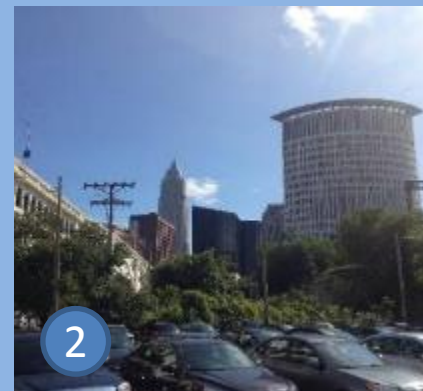
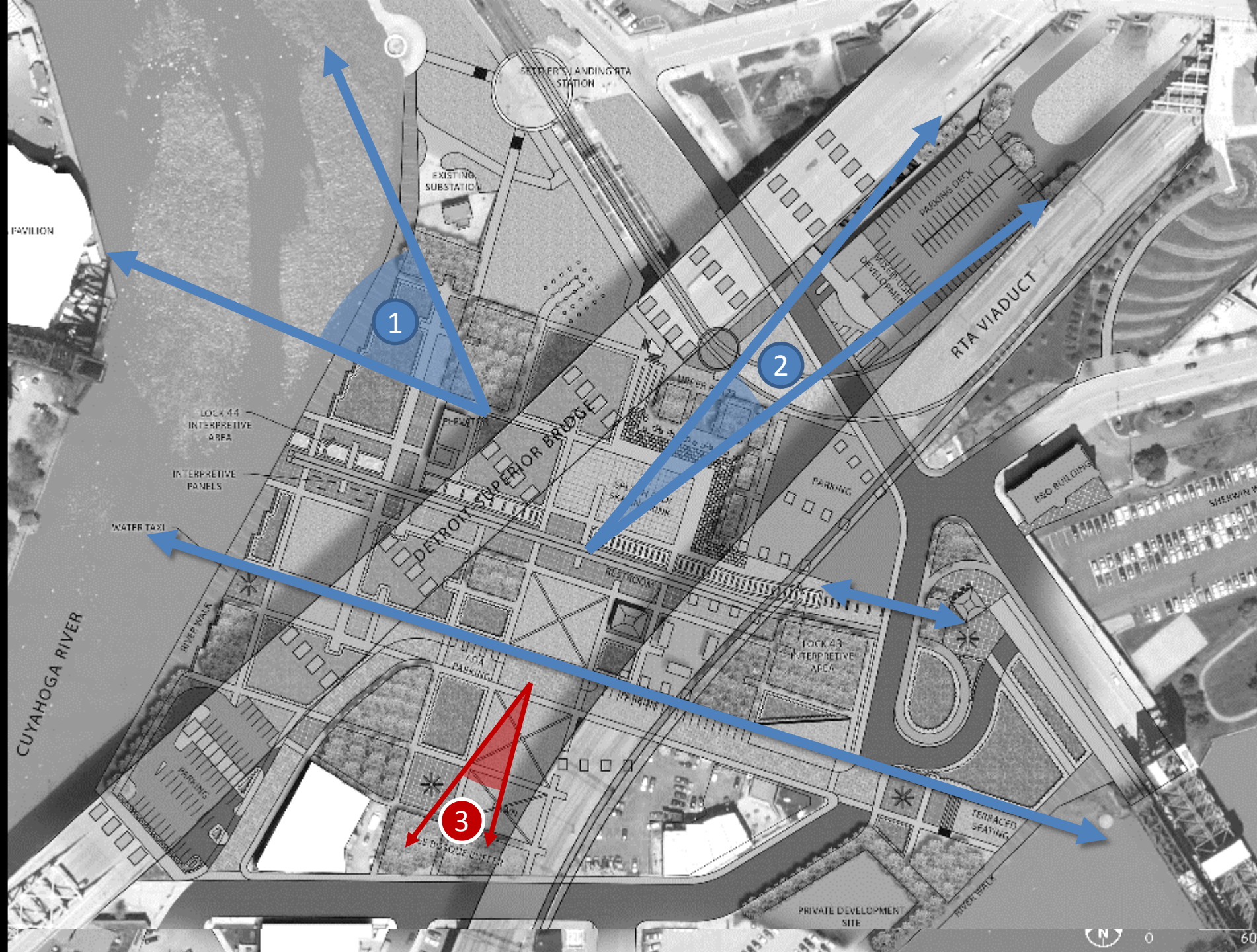


Trail & Transit Network



- Ohio & Erie Canal Towpath Trail
- GCRTA Waterfront Line
- Riverfront Riverwalk
- Lower Deck Detroit Superior Bridge
- Downtown Connection
- Metroparks Water Taxi

Vistas & Viewsheds

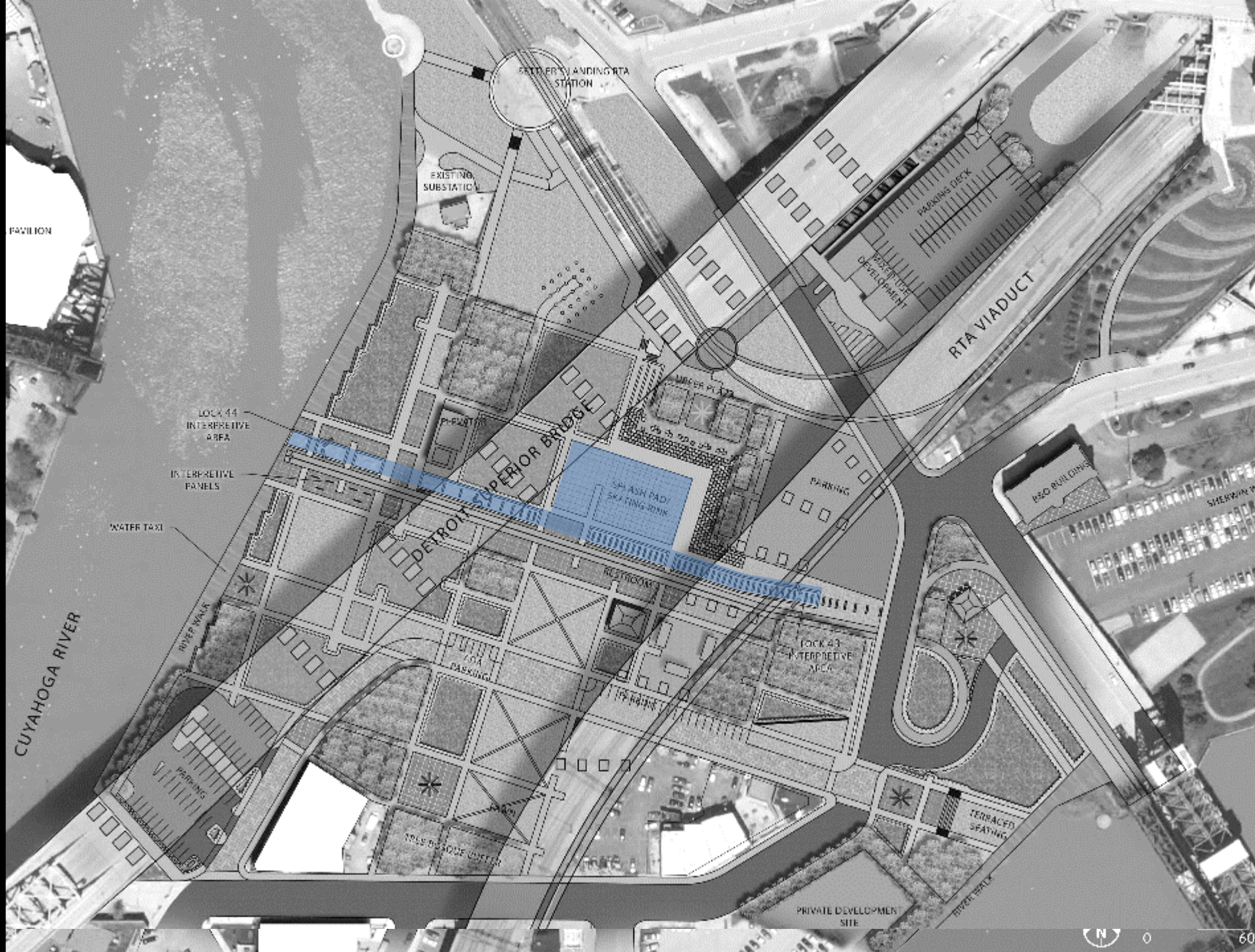


Use Zones/Rooms



-  Center Piece
-  Riverfront
-  Heritage Discovery Area
-  Towpath Gateway
-  Lower Bridge/City Connection

Historic Canal & Turning Basin



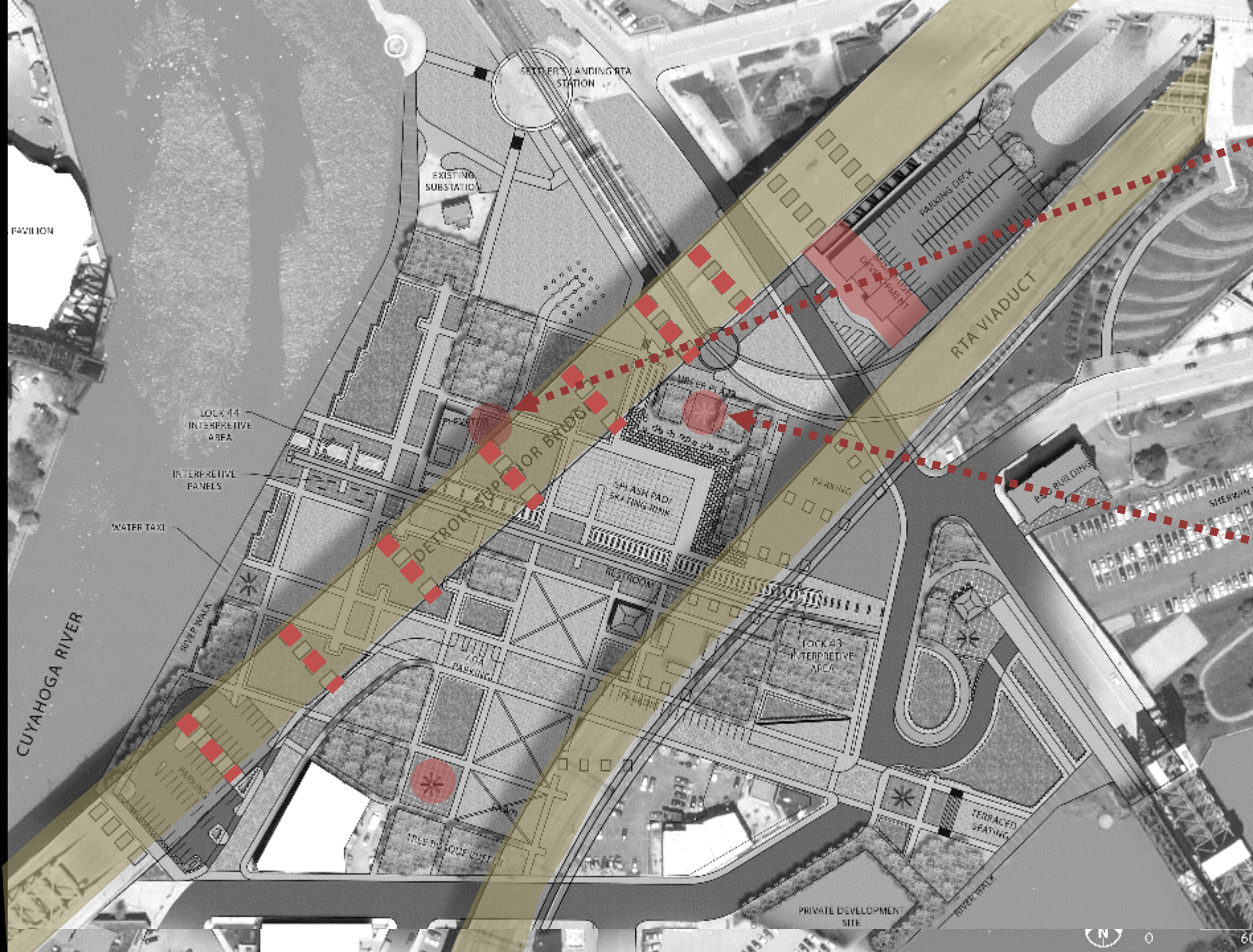
Parking



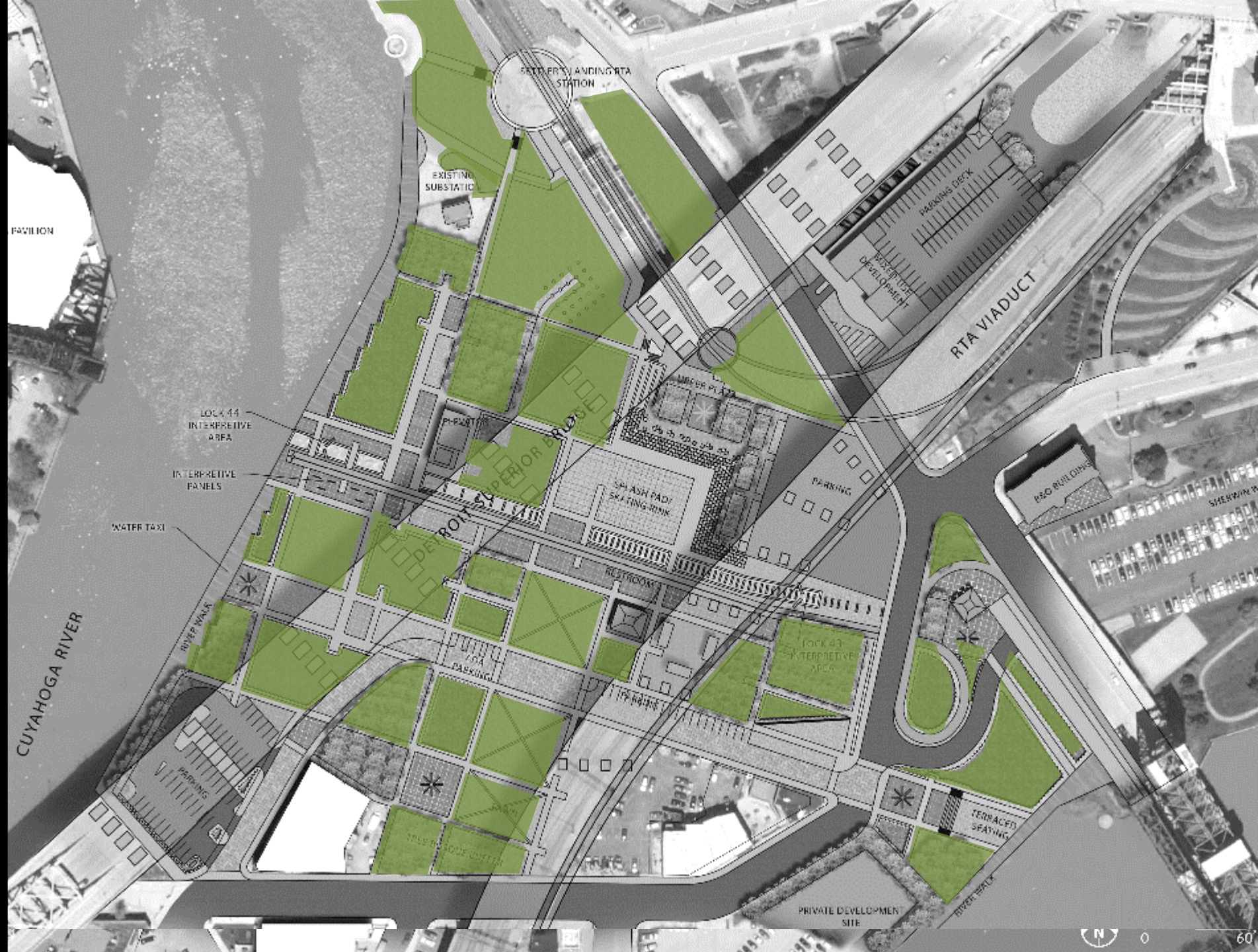
Economic Development



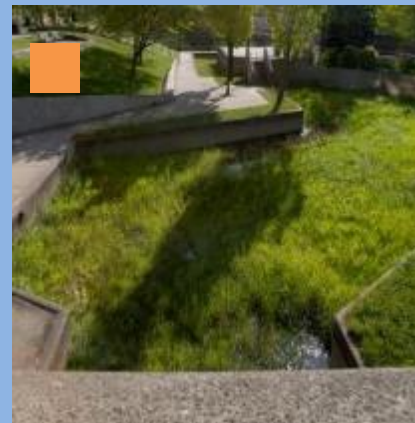
Verticality



Green Space



Green Infrastructure



[illegible]



Entering the Park

Canal Basin Park stretches east across Columbus Road to the banks of the Cuyahoga River, establishing a river-to-river connection along the West Ave corridor. Visitors from the Towpath Trail will drop from Columbus Road to an underpass that serves as a dramatic gateway to Canal Basin Park.



Towpath Trail Terminus

The 101-mile Towpath Trail terminates at Canal Basin Park. A ceremonial marker will represent the northern end of the Towpath Trail. At Lock 44, the historic “Sloop Lock” of the Ohio & Erie Canal, water will flow through a symbolic gate into a lower section before appearing to spill into the Cuyahoga River. A welcome center is depicted near the bridge with a glass elevator that will enable visitors to access the Veterans Memorial Bridge.



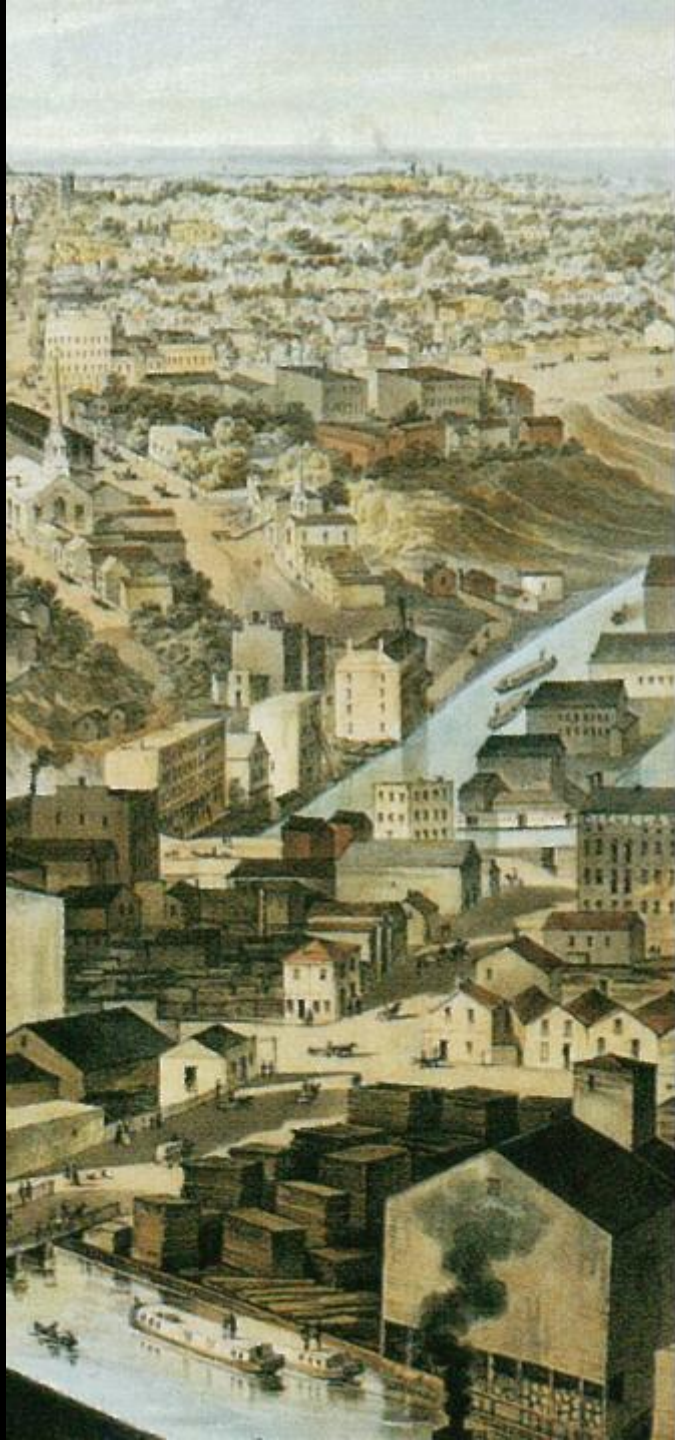
Canal Basin

At the heart of the Park, a water feature represents the historic Canal Basin. A companion water feature representing the original canal travels along the Towpath Trail as it connects to the river. Informal seating is provided by large-cut sandstone blocks reminiscent of those pulled from quarries for the canal locks. The Basin water feature can be turned off and used for additional public assembly space.



Cuyahoga River Riverwalk

From the park, visitors will also be able to access a boardwalk system that will eventually allow users to walk from Rivergate Park to the Flats East Development near the mouth of the river.



Management: Four-Party Agreement



Canalway Partners, the City of Cleveland, Cuyahoga County and the Cleveland Metroparks have entered into a Project Agreement that outlines the partnership relationship as it pertains to the construction of the Towpath Trail. The guiding document for this Agreement is the Towpath Trail Extension: Alignment and Design Study (2002) – which describes the Project that includes the Towpath Trail, environmental regeneration, interpretation, trailheads and Canal Basin Park.

Canalway Partners

Per the Four-Party Agreement, Canalway Partners can provide staff, purchase needed property, lead public outreach and media relations, and coordinate funding needs.

City of Cleveland

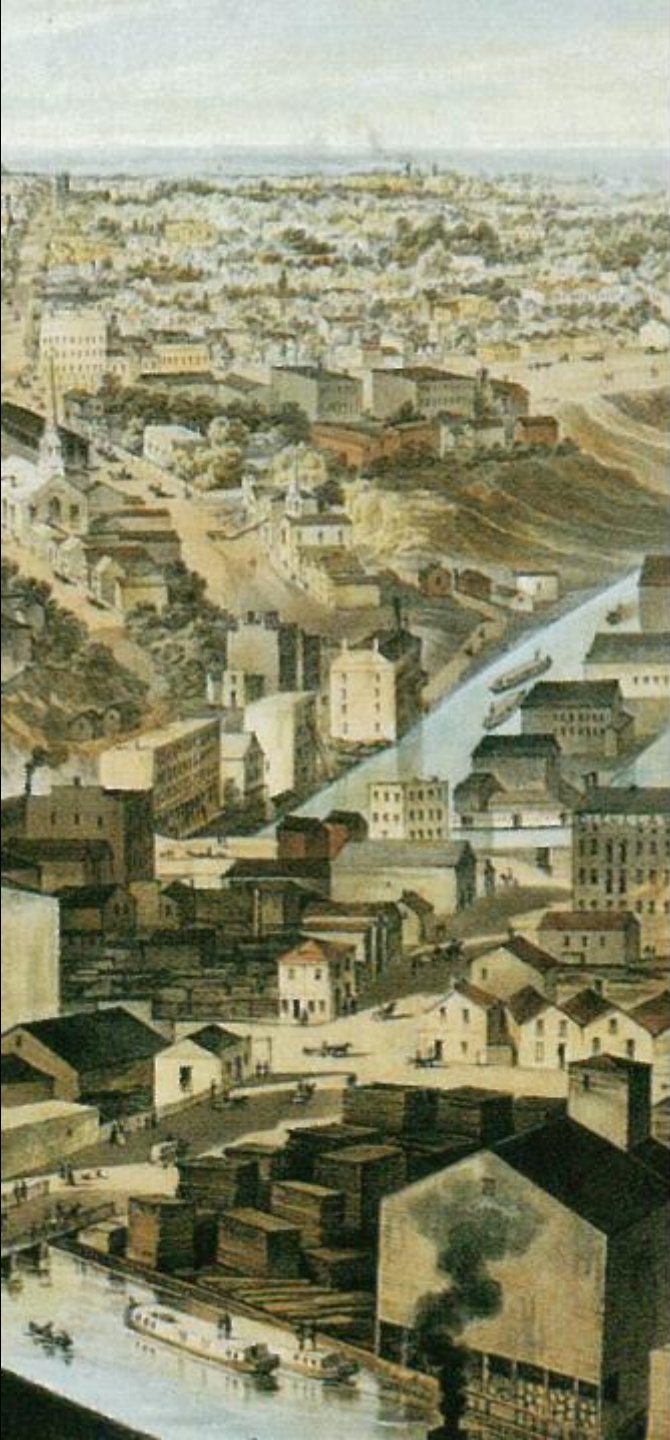
The City of Cleveland is the landowner of the parcels associated with the Towpath Trail Greenway and is responsible for capital improvements for the project.

Cleveland Metroparks

Cleveland Metroparks is responsible for everyday maintenance, security, and programming. It has recently purchased property along the Cuyahoga River and is developing a greater presence.

Cuyahoga County

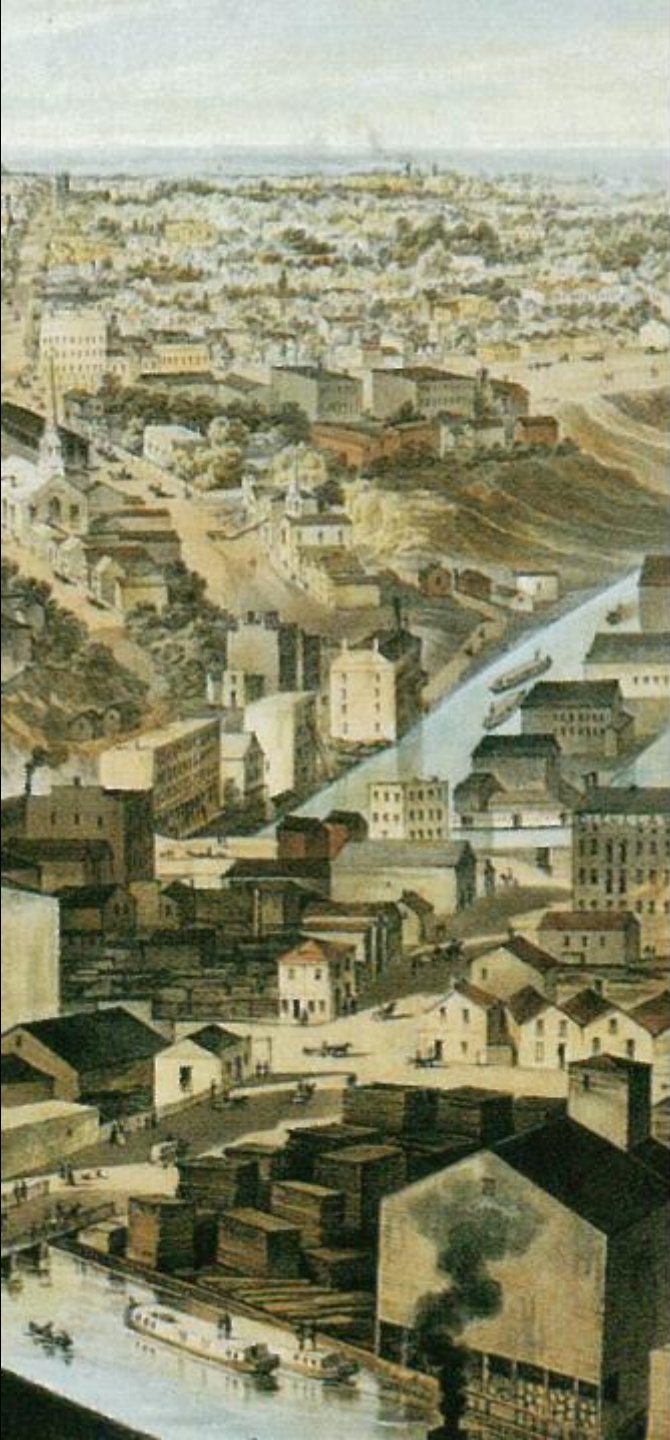
Cuyahoga County plays the role of project manager through the Office of Public Works. The County also provides property it owns and manages – including some waterfront parcels within the footprint of Canal Basin Park.



The Time is Right!

Northeast Ohio faces a unique opportunity to create a national model for the National Park Service's Ohio & Erie Canalway National Heritage Area at Canal Basin Park.

- By 2019, the Ohio & Erie Canalway Towpath Trail is scheduled to reach Canal Basin Park, bringing with it 2.5 million annual travelers.
- On June 22, 2019, the 50th anniversary of the Cuyahoga River fire, we will celebrate the resultant environmental advances and the river become a valued recreational asset.
- The National Park Service will celebrate its Centennial Anniversary in 2016. The NPS is launching new efforts to engage urban-centric "millennials."
- Canal Basin Park will provide the National Park Service with the ideal location for an urban gateway to the Ohio & Erie Canalway National Heritage Area.



Next Steps

- Planning Commission Adoption
- Detailed Site Analysis
- Explore Implementation Options -
Group Plan Model, Committees
 - Finance
 - Design
 - Management
- Outreach
- Determine Budget and Schedule

