

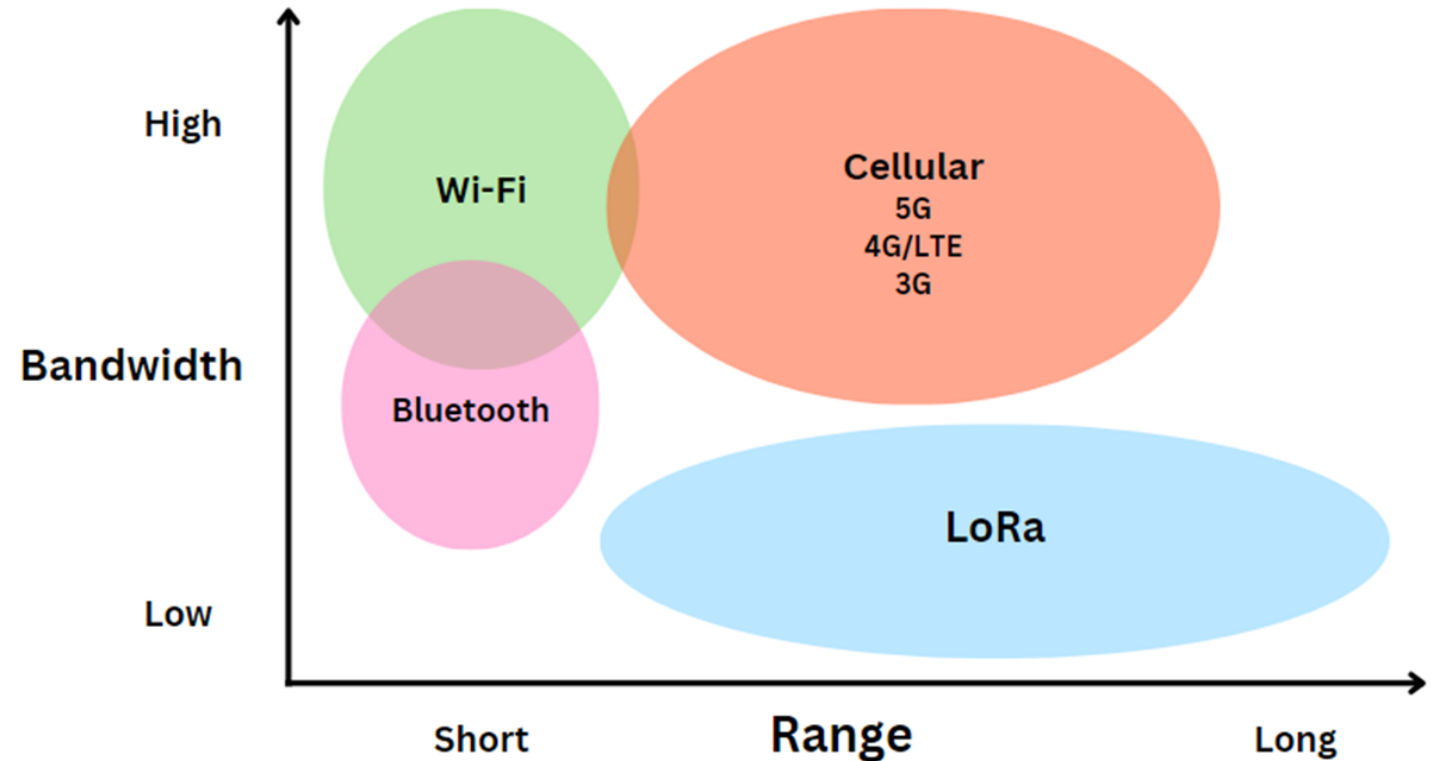


Emerging Technologies:
Satellites & LoRaWAN
ITS/NR
11/21/2024

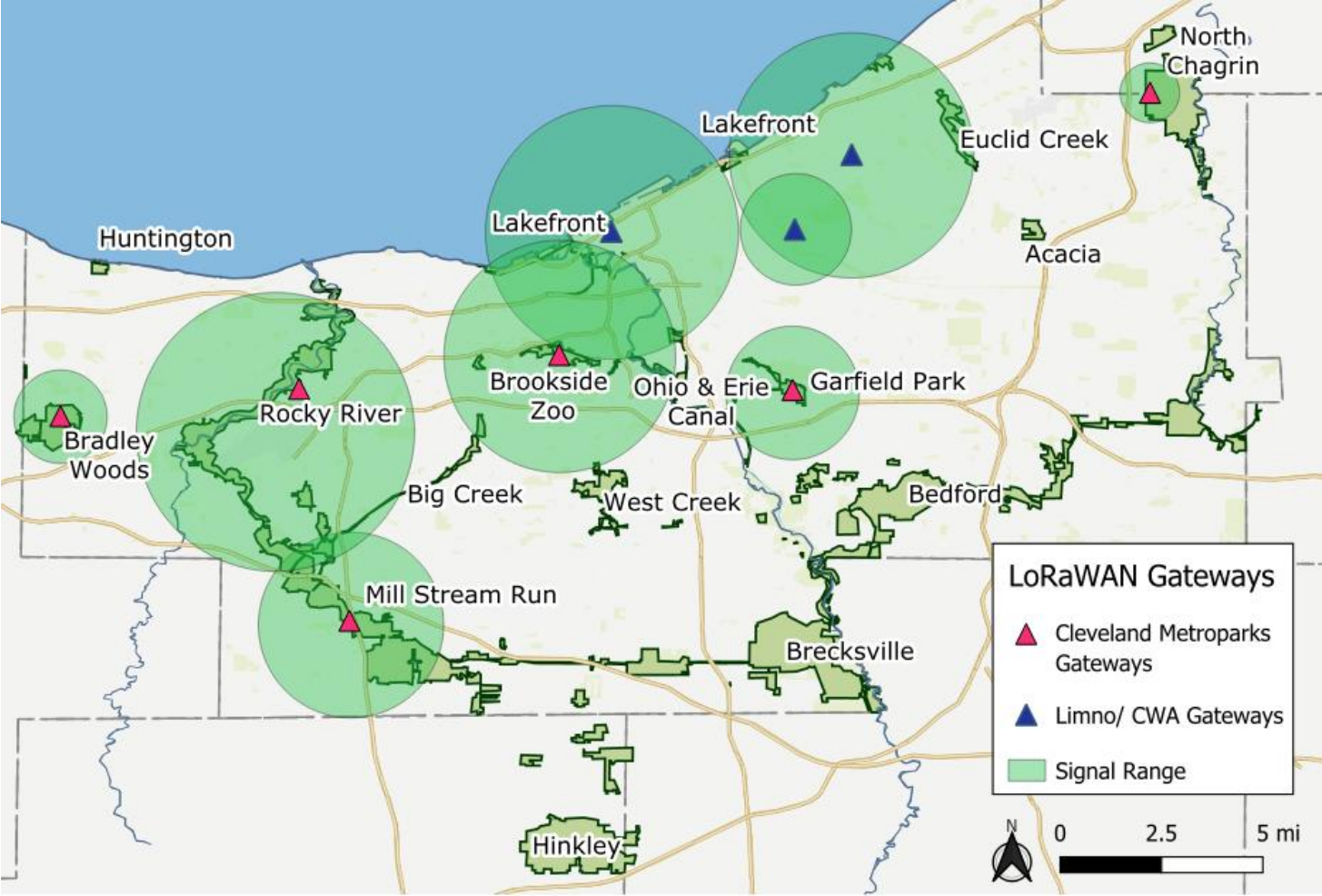


LoRaWAN Overview

- **Long Range Wide Area Network:** allows for energy-efficient data transmission over long distances
- **Advantages:** low-cost, long battery life, no SIM or data logger needed
- **Limitations:** low bandwidth (cannot transmit photos/videos)
- **Applications:**
 - Environmental monitoring with "in-situ" sensors
 - Utility sensors
 - Trail monitoring

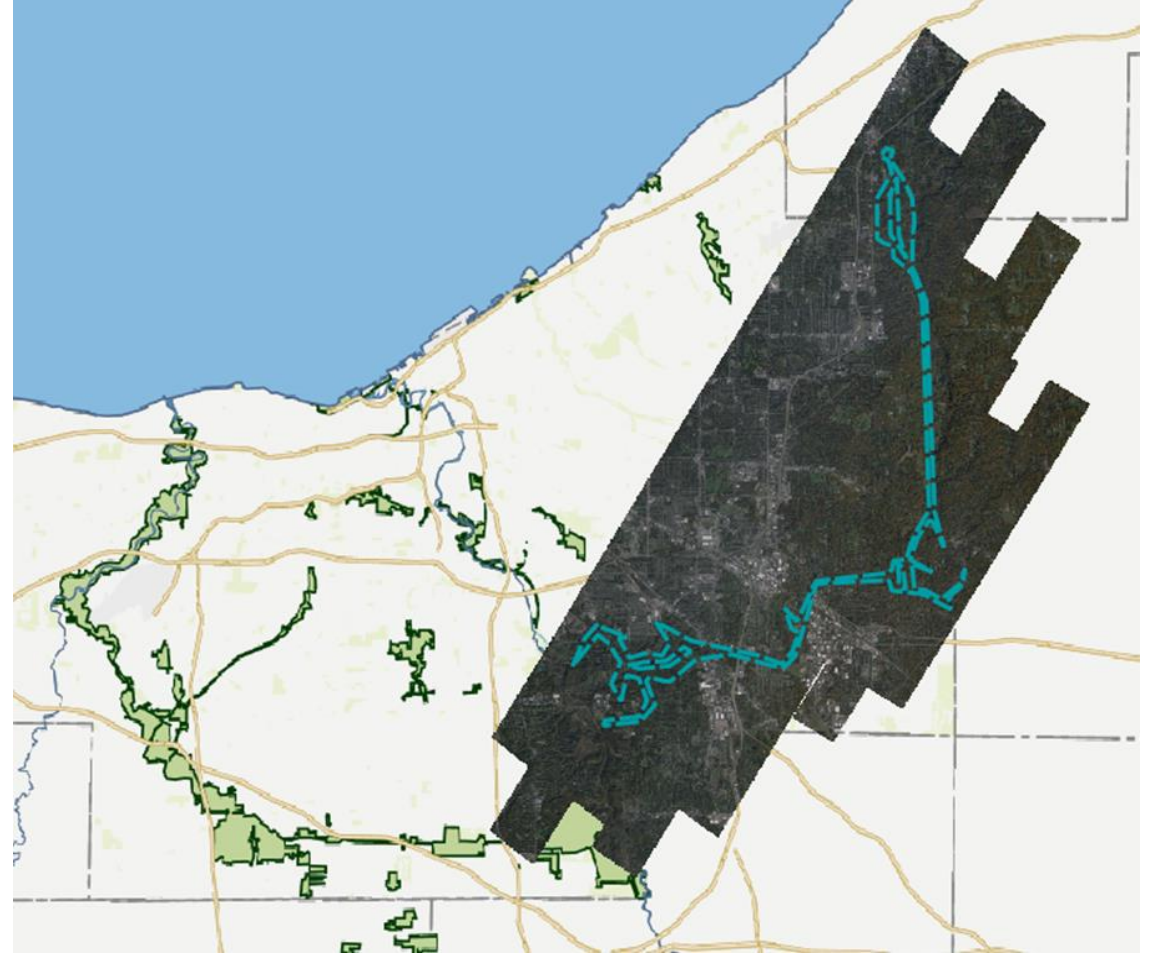


Gateways



Satellite Overview

- **Planet Labs:** SkySat constellation of 15 satellites launched in 2016
- Advantages of high temporal resolution satellite imagery:
 - Change detection, land management, monitor capital projects (ex: Hinckley dam, CHEERS)
 - Capture imagery when drone flight is not possible (weather, piloting, restrictions)
- Ability to "task" for aerial satellite imagery and delineate areas of interest



Sources of Aerial Imagery

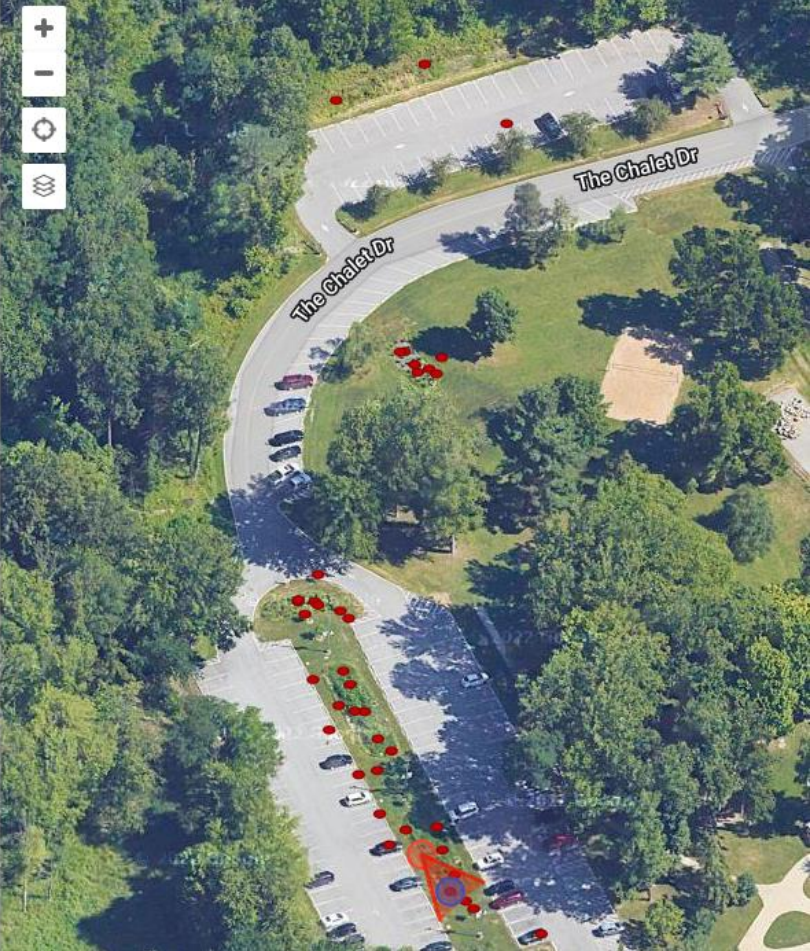


Images courtesy of GIS Department

SkySat Constellation



Natural Resources use of LoRaWan sensors



Chalet Bioretention Cells

Public

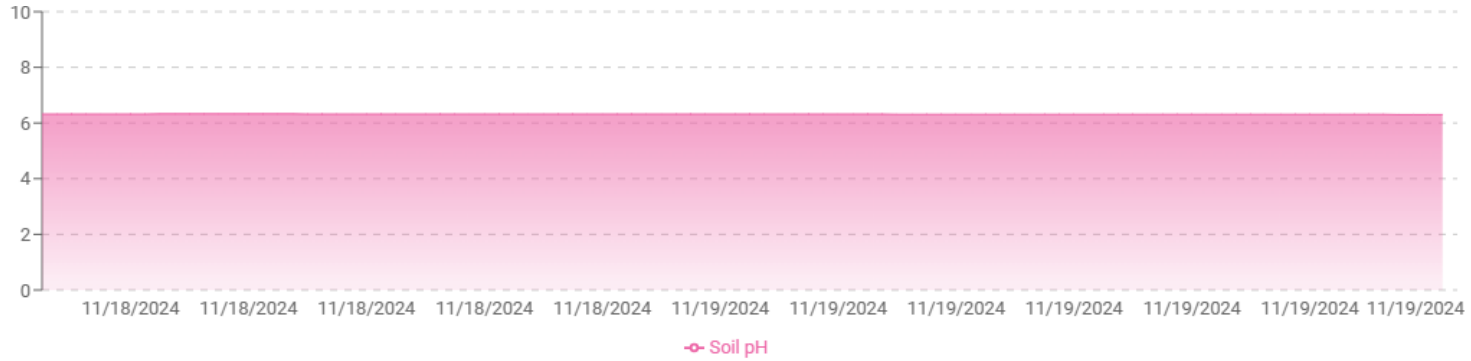
Air Temperature / Humidity

Default 1H 1D 1W 1M Custom



Soil pH

Default 1H 1D 1W 1M Custom



Current Readings:

Air Temperature
20 minutes ago

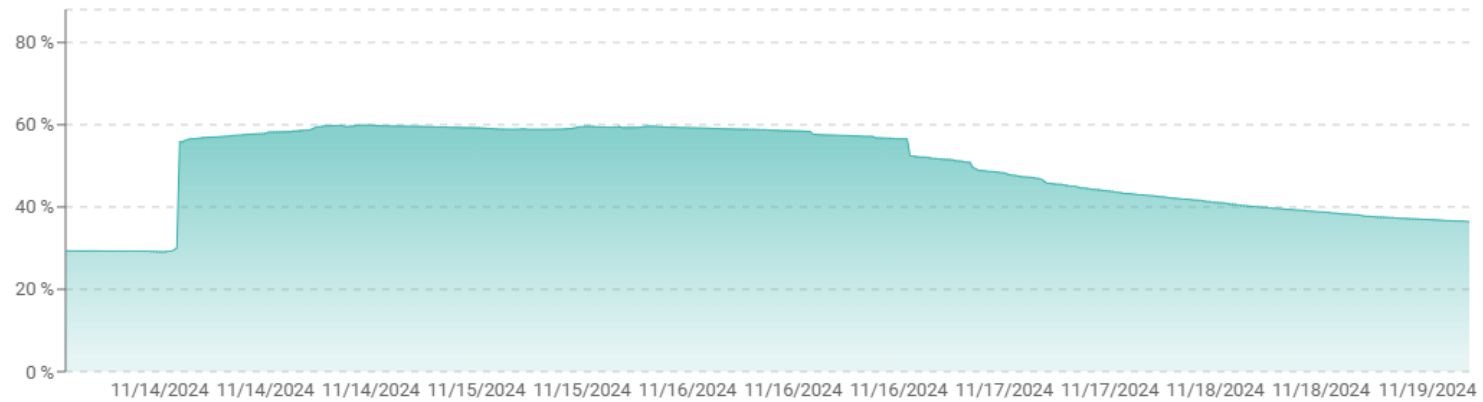
15
Degrees C

Humidity
20 minutes ago

81.60
% RH

Soil moisture

Default 1H 1D 1W 1M Custom



Soil Temperature
18 minutes ago

11.80
Degrees C

Soil pH
18 minutes ago

6.30
pH

Soil Conductivity
19 minutes ago

108.00
uS / cm

Soil Moisture
19 minutes ago

35.31
%

- Stream level

Location: East Branch of Rocky River

Coordinates: 41.324151, -81.816688

Current River Stage (ft)
14 minutes ago

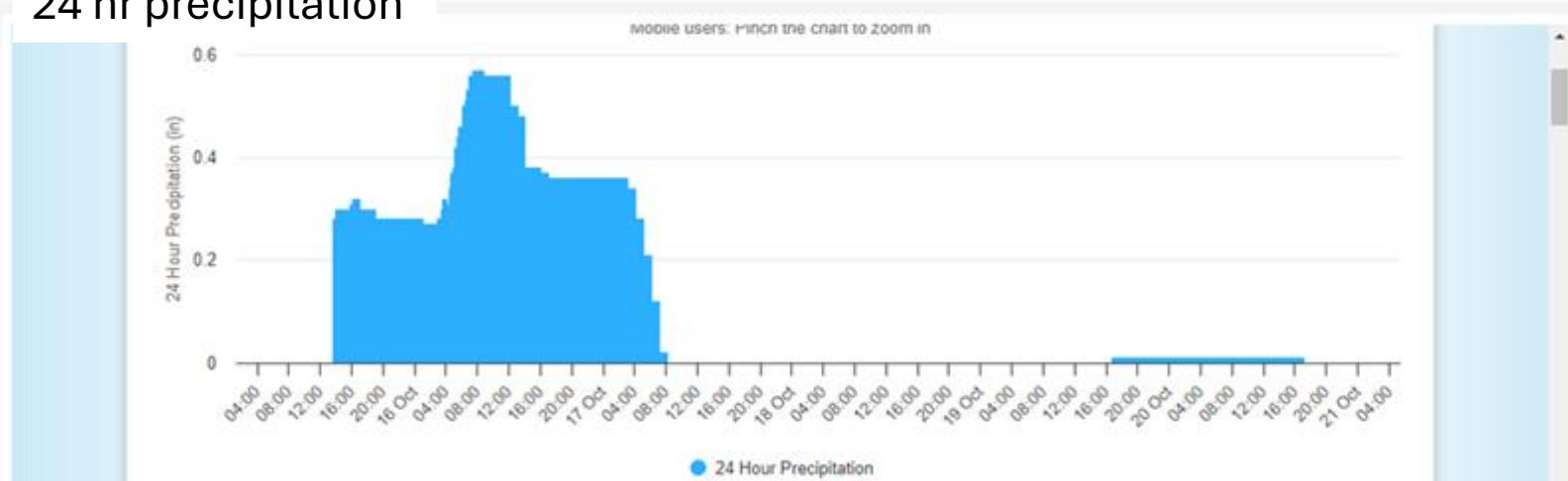
1.79
ft



River stage



24 hr precipitation



Wolf Creek at Garfield Reservation

Coordinates: 41.4277573, -81.6042573

Current River Stage (ft)
5 seconds ago

3.67
ft



River stage

Default 1H 1D 1W 1M Custom



NATIONAL WEATHER SERVICE
NATIONAL OCEANIC AND ATMOSPHERIC ADMINISTRATION

MILL CREEK AT GARFIELD PKWY AT GARFIELD HEIGHTS Western Region Headquarters

[Weather.gov](#) > [Western Region Headquarters](#) > Time Series Viewer

Regional Headquarters

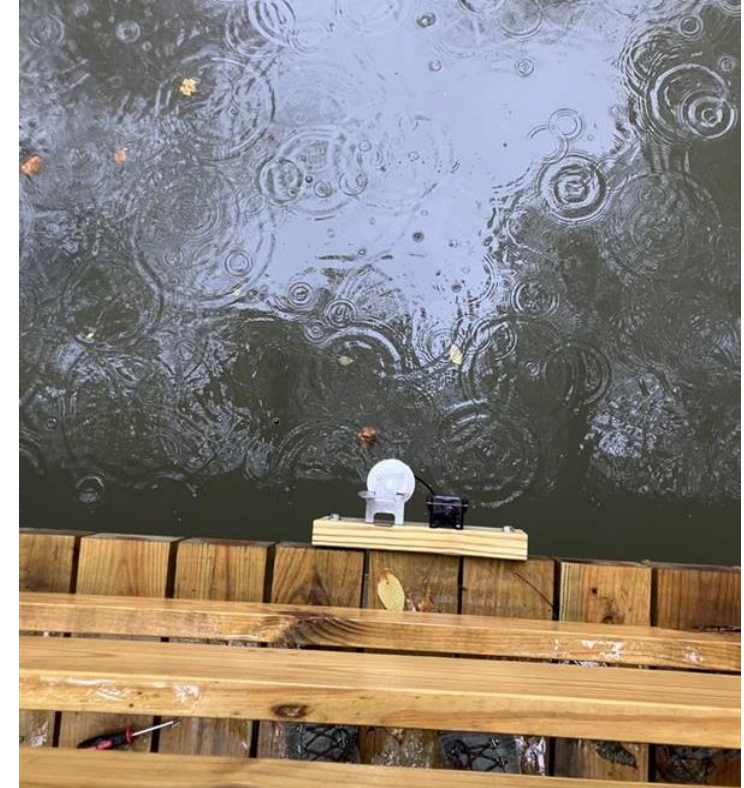
Natural Resources plans for satellite imagery

- Storm damage
- Oak wilt
- Invasive plant i.d.



Other Applications & Future Use-cases

- **Air quality sensor network**
 - Collaboration with NR and City of Cleveland
- **Utility sensors**
 - Park Operations
 - Zoo Facilities
- **Zoo**
 - "Mini forest"
 - Water quality monitoring
- **Marketing**
 - Trail monitoring pilot
- **Satellite:** exploring other remote sensing tools
 - Encroachment detection/ monitor land-use
 - Invasive vegetation monitoring, forest health



- Exploring other sites for water level sensors