



Irishtown Bend Park

July 17, 2025

A photograph of a wooden suspension bridge spanning a river. Two people are walking across the bridge. The river is surrounded by lush green trees and foliage. The bridge has a wooden deck and railings, and is supported by cables. The riverbank is lined with stone retaining walls. The scene is peaceful and scenic.

Cleveland Foundation Centennial Lake Link Trail &
Franklin Avenue Enhancements Update

Irishtown Bend – Stabilization



Irishtown Bend – Stabilization



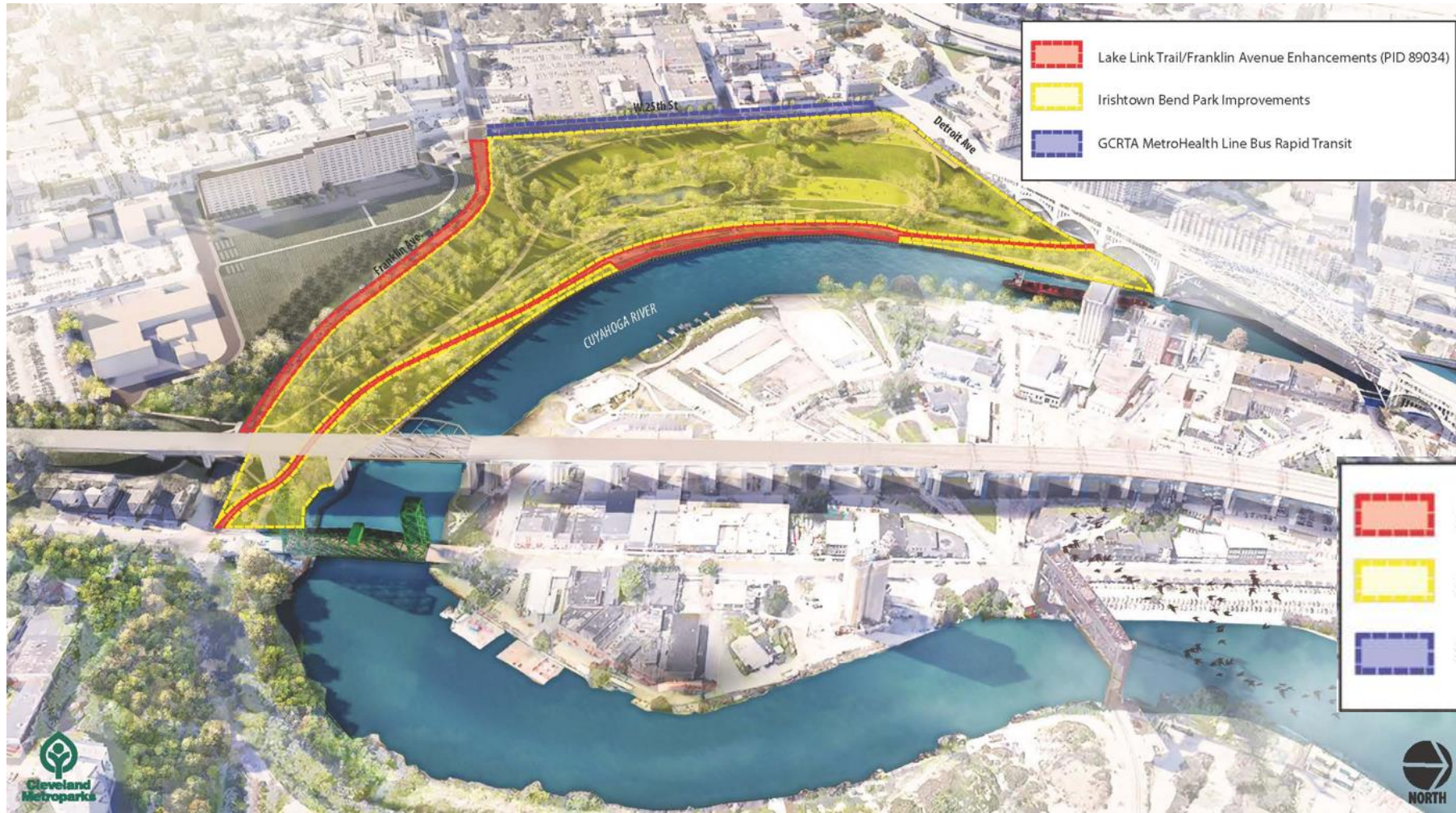
Irishtown Bend – Stabilization






Irishtown Bend (ITB) – Project Overview



Irishtown Bend (ITB) – Project Overview

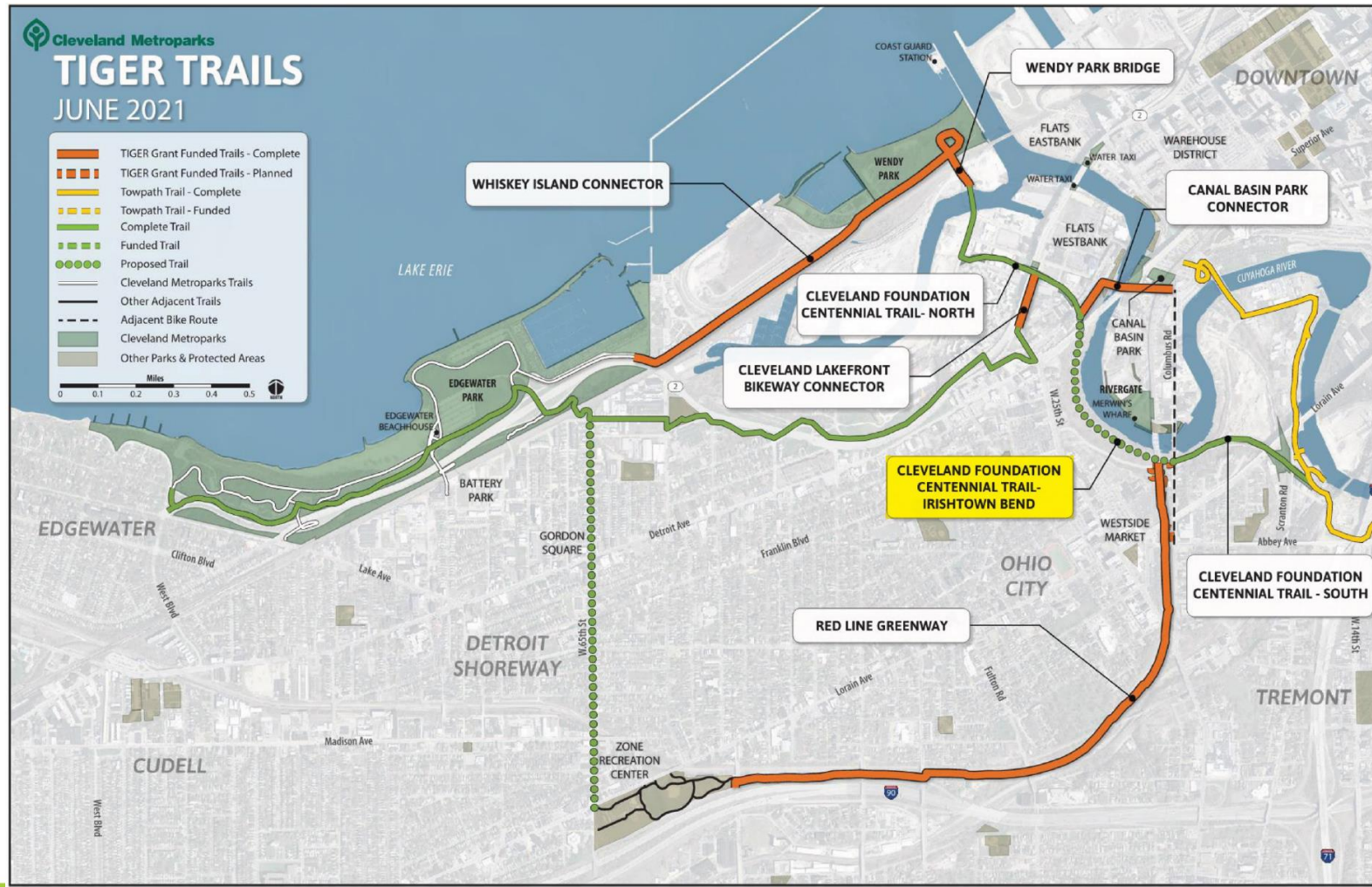


-  Lake Link Trail/Franklin Avenue Enhancements (PID 89034)
-  Irishtown Bend Park Improvements
-  GCRTA MetroHealth Line Bus Rapid Transit

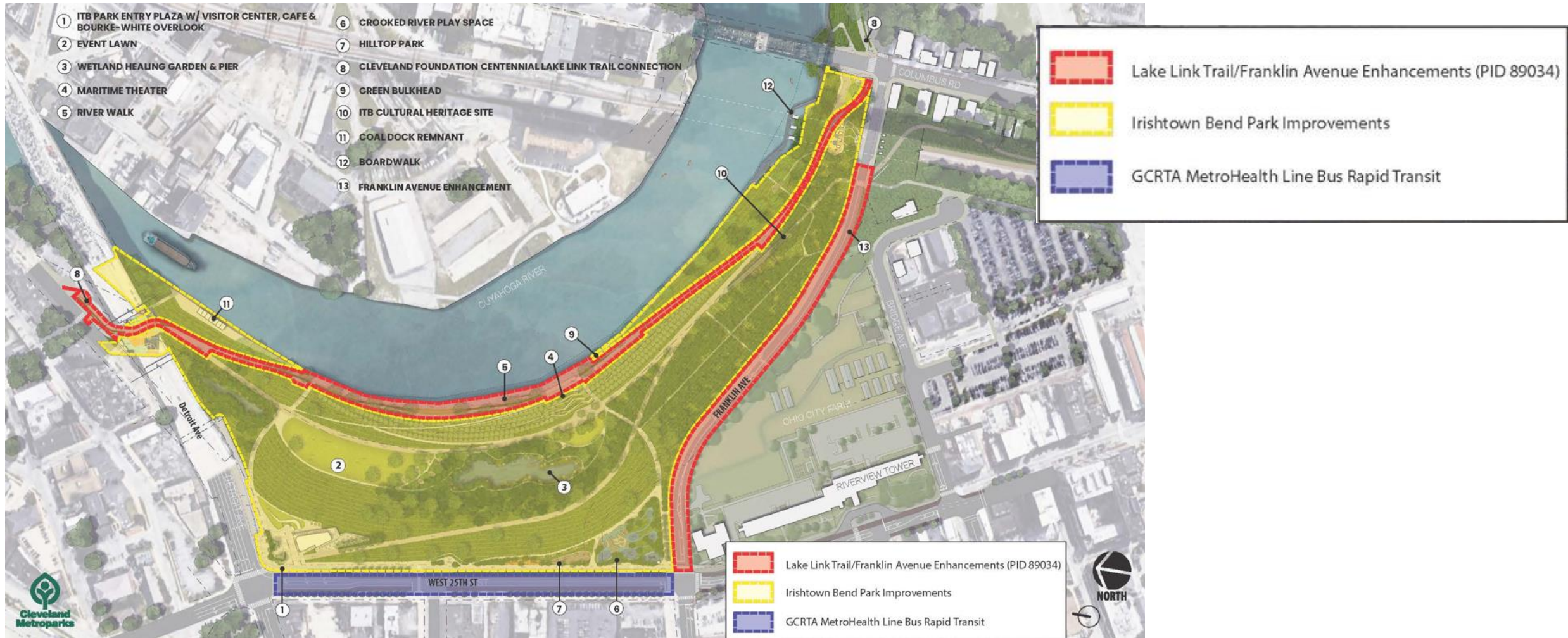
-  Lake Link Trail/Franklin Avenue Enhancements (PID 89034)
-  Irishtown Bend Park Improvements
-  GCRTA MetroHealth Line Bus Rapid Transit



Irishtown Bend (ITB) – Lake Link Trail



Irishtown Bend (ITB) – Project Overview



Irishtown Bend (ITB) – Park Components



Lake Link Trail



Hilltop Grill Garden



Franklin Enhancements



Crooked River Play Space



W. 25th Multipurpose Trail & Streetscape



Maritime Theater & River Walk

Irishtown Bend (ITB) – Preliminary Schedule

Preliminary Project Schedule

ODOT CMR Project Delivery Method Approval	Complete
CMR RFQ Solicitation	June – July 2025
CMR RFP Solicitation	August 2025
CMR Selection & Approval	September 2025
CMR Pre-Construction Services	October – January 2026
CMR Lake Link Trail / Franklin Enhancement GMP Approval	February 2026
Lake Link Trail / Franklin Enhancement Construction	Spring 2026 – Spring 2027
Irishtown Bend Park Components GMP Approval	Spring / Summer 2027
Irishtown Bend Park Components Construction	Begins Summer 2027

Irishtown Bend (ITB) – Design Contract

Schematic Design

- Development of the Park layout including hardscape, landscape, trails, event areas, playgrounds, amenities and other features for the Park.
- Park Planning and Preliminary Design.
- Schematic Civil Engineering Design and Support including site, grading, drainage and utility support.
- Schematic Structural Engineering Design and Support – Site retaining walls and foundations in support of Park elements.
- Schematic MEP Engineering Design and Support – Site power and other utilities as needed for Park amenities.
- Schematic Lighting Design – Preliminary layout and photometrics for Park lighting.
- Schematic Slope Stability Support – guidance and review of Park design to ensure slope stability.
- Site Surveying (as needed).
- Geotechnical and slope stability design support.
- Permitting Requirements.
- Construction Risk Mitigation.
- Opinion of Probable Construction Costs (OPCC).
- Lighting and electrical engineering design to support the Park lighting working with Plural. Develop preliminary photometrics to determine lighting requirements.
- Coordinate with the City of Cleveland MOCAP for elements impacting the Right-of-way and roadways.
- Develop cut and fill calculations to assess grading impacts.
- Coordinate the site with environmental findings as required and determine offload requirements.
- Coordinate with utility owners within the site limits including both public and private utility providers. Develop utility plans for the design of the Café and Restrooms (only). MEP building design services are not included with this task.
- Develop requirements to maintain, improve, relocate and remove as required by each utility.
- Develop preliminary hydrology and hydraulic models and calculations for drainage items and stormwater management BMPs.

Design Development

- Site, grading, drainage, paving, SW3P, and utility plans.
- Structural engineering design of retaining walls, foundations and other structural elements. Coordinate with geotechnical engineer to verify slope stability.



Scope of Services	Fee
Schematic Design	\$496,579
Design Development	\$721,958
Allowance - Restroom Preliminary Design	\$95,000
Allowance - Additional Survey, Platting and Easements	\$50,000
Allowance - Environmental Permitting	\$40,000
Reimbursable Costs (Schematic and Design Development Phase)	\$15,500
TOTAL	\$1,419,037