



BROOKSIDE PLAY FIELDS & PARKING
• Optimize for informal use along with sports events, zoo overflow parking, and Brookside events

BROOKSIDE VALLEY EVENT SITE
• See Upland Area note re. proposed trail between the Event Site and Meadow Ridge overlook will improve connectivity, including access to existing vernal pools for programs
• Consider enclosed facility for year-round use

BIG CREEK CORRIDOR
• Consider partnering to pursue upstream stormwater storage to reduce flood intensity

JOHN NAGY BLVD
• Add trailhead amenities and play area, fitness equipment, and signage in cooperation with natural resource restoration efforts in the area
• Remove roundabout and create an intersection with three stop signs
• Improve bike and pedestrian connections along Ridge Road

CONNECTIONS TO WEST
• Explore connections to Big Creek Reservation and other public open space, including Brooklyn's Kingdom Trail
• Add wayfinding elements along Brookside Drive to enhance neighborhood/park/St. Thomas More/Brooklyn Community Center connections

BROOKSIDE BALL FIELDS
• Investigate options to relocate city forestry operations
• Coordinate pending Northeast Ohio Regional Sewer District project construction access and impacts to park along with proposed leave-behind conditions
• Renovate trails sections on the hill
• Add a segment of paved trail along the toe of the bluff and behind the ball diamonds to create a loop
• Consider playground improvements and potential field conversions to turf

MEADOW RIDGE PICNIC AREA
• Upgrade play equipment
• Add flush restroom

UPLAND AREA & OVERLOOK
• Add stairs connecting upland overlook area to Brookside Event Center. Include a wheeling ramp to facilitate walking bicycles up or down the stairs and promote as part of Brookside's fitness programs. Provide trail maps along Fulton and in the valley
• Maintain buffer along zoo perimeter

VALLEY STEWARDSHIP
• Repair damaged headwalls
• Add plantings and stabilize erosion
• Develop natural surface trail from Wildlife Way to E.38th

NEIGHBORHOOD CONNECTIONS
• Add Cleveland Metroparks trailhead signage at trail from Muriel and 38th St. to Wildlife Way
• Explore opportunities with Estabrook Recreation Center/ Cleveland programs

BRIGHTON PARK
• Consider adding a small scale nature play feature
• The Greater Cleveland Regional Transit Authority's MetroHealth Bus Rapid Transit improvements will add a two-stage mid-block crosswalk for safe connections between the zoo and Brighton Park

HISTORIC BROOKSIDE PARK STADIUM
• Increase public awareness of historic use through programs / events and interpretive signage
• Consider re-activating baseball field

HISTORIC UNDERPASS
• Highlight Stinchcomb's involvement in the stone underpass with an interpretive sign

CLEVELAND METROPARKS ZOO
• Improve connections into the Zoo for transit passengers arriving along Fulton Parkway or Pearl Road. Consider adding wayfinding and explore microtransit or e-bike options.
• Coordinate with Zoo major planning updates
• Reduce vehicular / pedestrian conflicts at entry
• Continue to incorporate green infrastructure at Zoo parking
• Strengthen bike and pedestrian links through Brookside Park to Zoo entrances

PEARL ROAD GATEWAY
• See Area Plan highlighting gateway to Zoo and Brookside Park and incorporating Foote Wolf Memorial Park, . 56 acres added in 2023, and updates to Zoo signage
• Improve access and sightlines into the park
• Explore bus drop off / Zoo shuttle to improve transit access

BROOKSIDE OVERALL
• Study circulation and improve wayfinding to Zoo and park
• Improve brand recognition of Cleveland Metroparks at Brookside facilities
• Improve coordination with area parks and community open space
• Secure adjacent land protection opportunities; discuss internal opportunities
• Continue to implement green infrastructure strategies to mitigate impervious surfaces

CONNECTIONS TO EAST
• Add wayfinding and promote Brighton Park, neighborhood greenway, and Treadway Creek trails as a connection to the Towpath, including missing link at Jennings Road
• Coordinate repairs along Treadway Creek trail with City of Cleveland

All Purpose Trail

Other CM Trails

Proposed Trails (Various Entities)

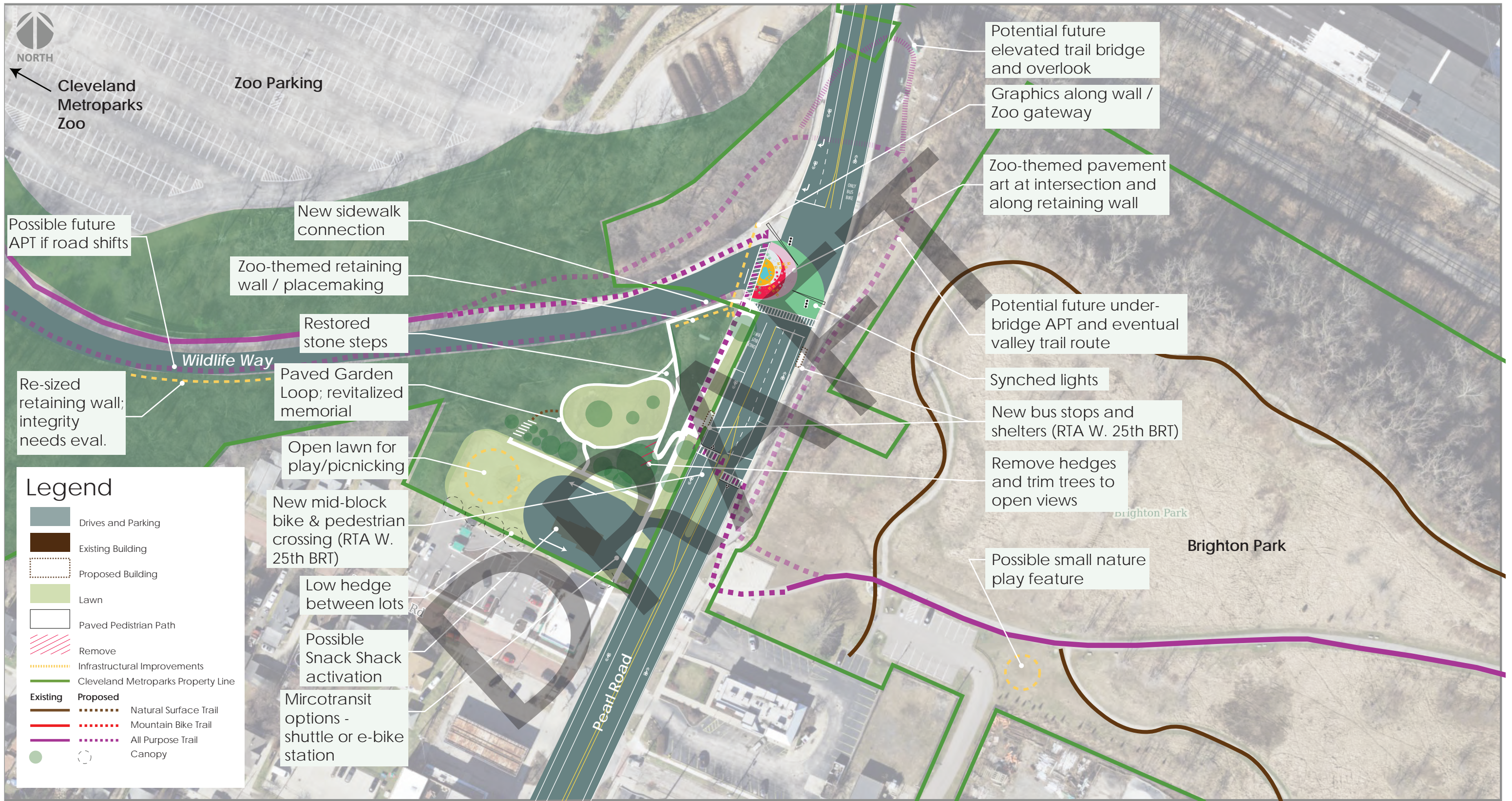
Land Protection

Water

Wetlands

Other Parks

Brookside Reservation: 176 acres



Pearl Road Gateway / Foote Wolfe Memorial Concept

December 2025

