

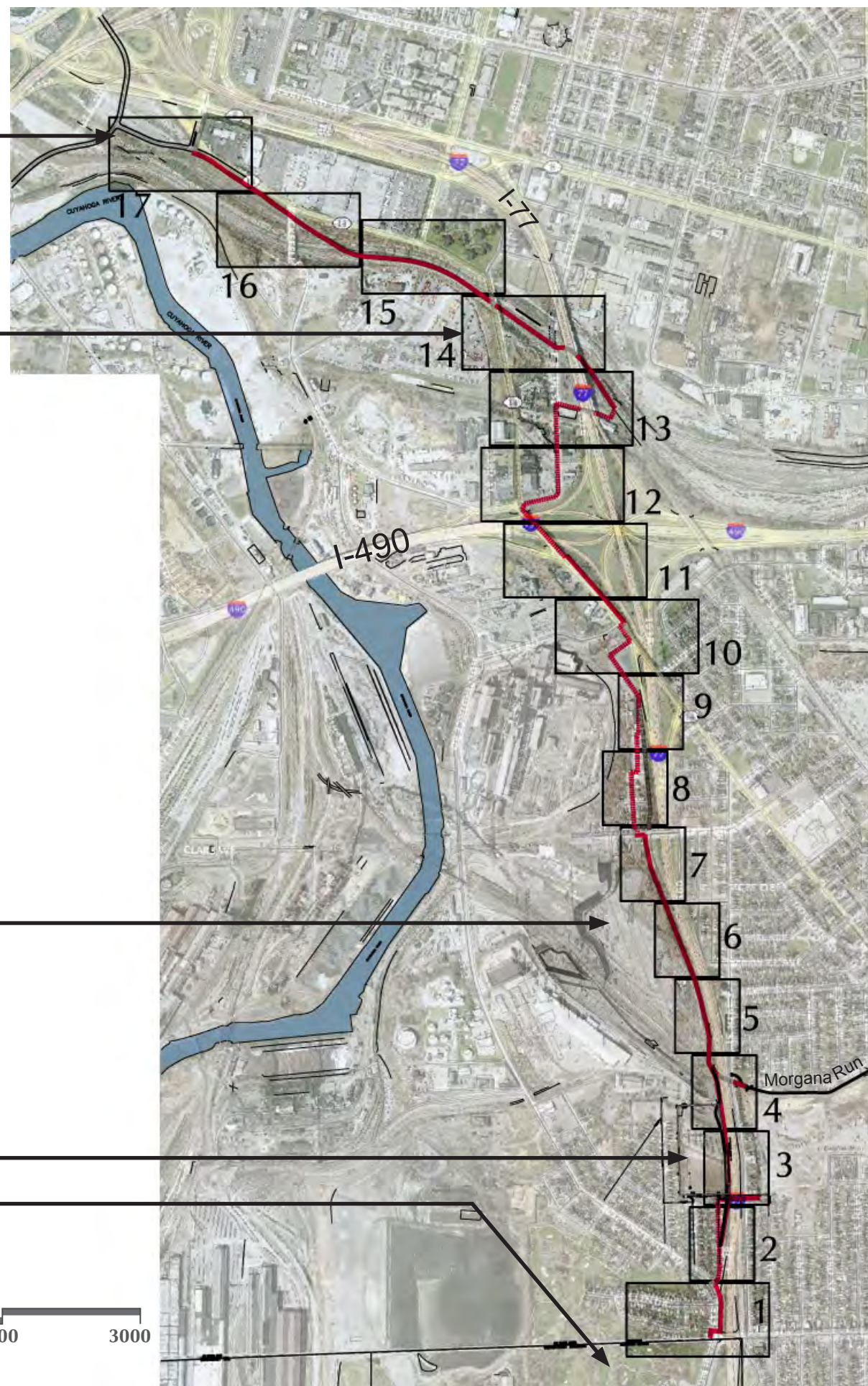
New Broadway / 9th Street
Downtown Connection

East 34th RTA Station

Job Ready Development Parcel

Steel Warehouse

Washington Reservation



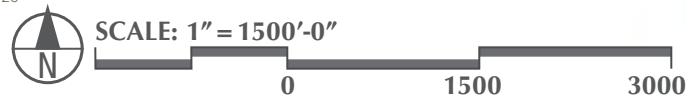
Route Overview

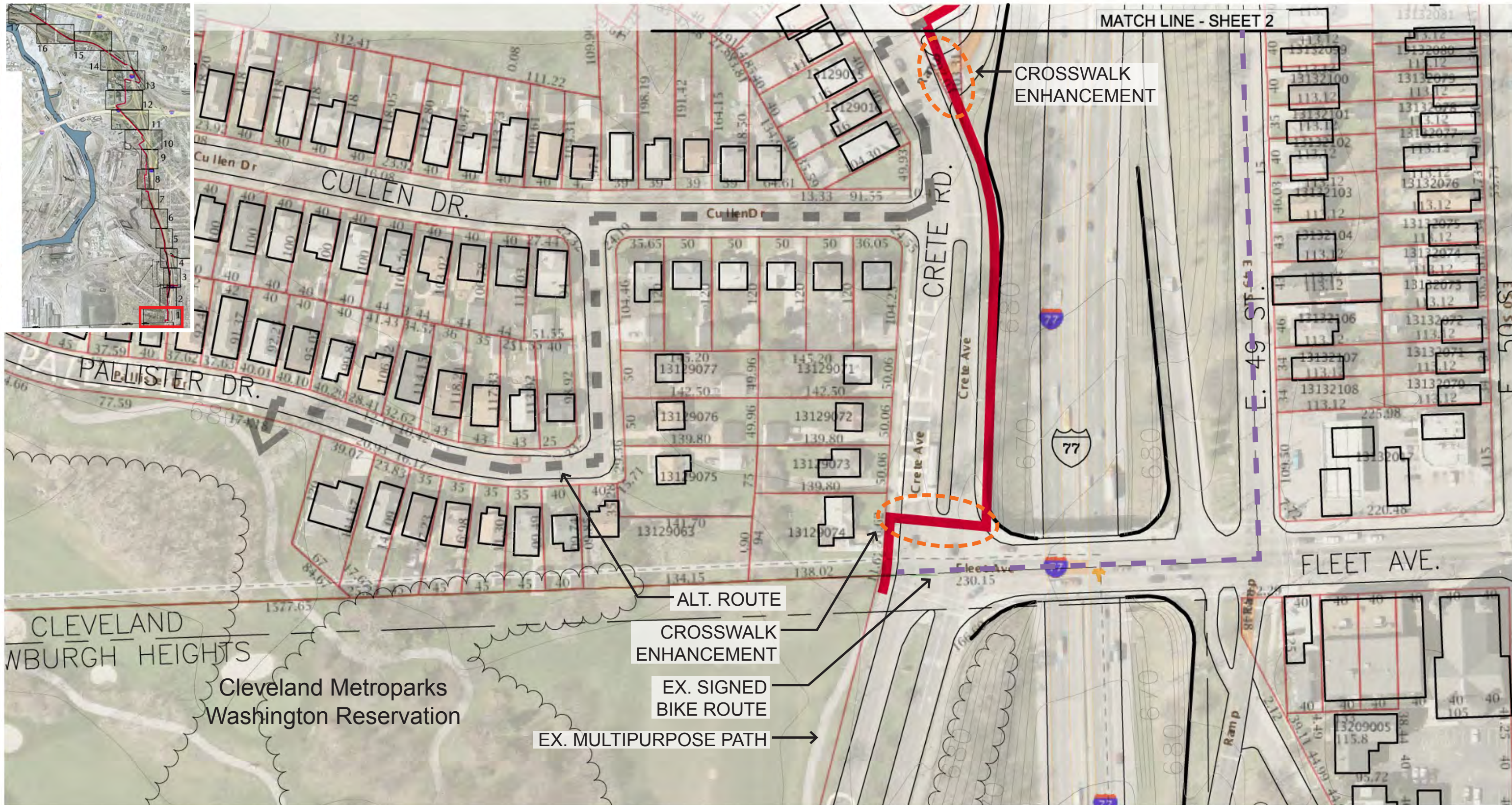
Downtown Connector Trail
 Washington Reservation Metropark to East 9th Street
 Slavic Village Development / City of Cleveland
 February, 2013



McKnight Associates Ltd.
 LANDSCAPE ARCHITECTURE

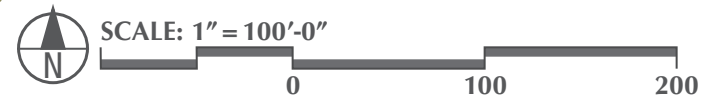
812 Huron Road, # 421
 Cleveland, Ohio 44115-1126
 p: 216 771-1800
 f: 216 771-1801
 www.mcknightla.com








812 Huron Road, # 421
 Cleveland, Ohio 44115-1126
 p: 216 771-1800
 f: 216 771-1801
 www.mcknightla.com

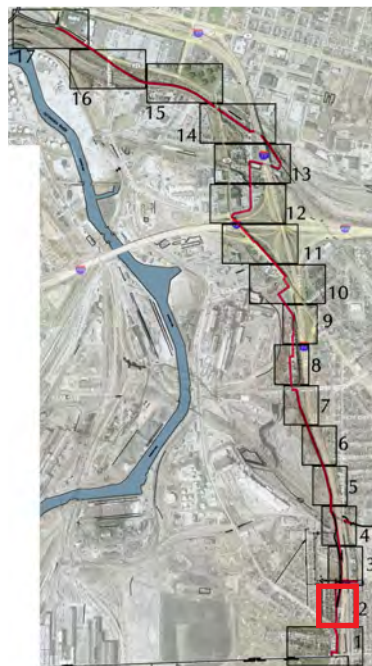
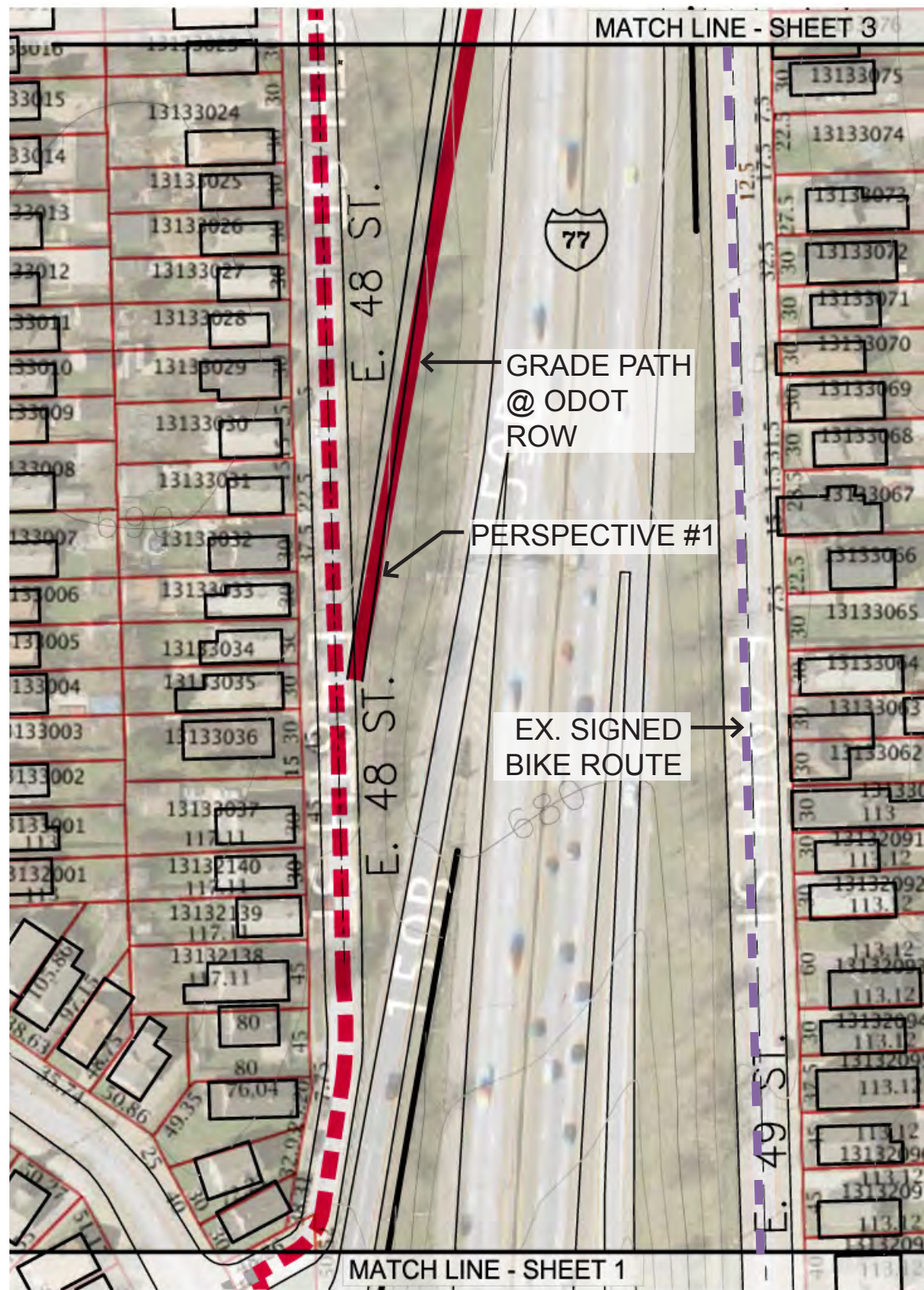
McKnight Associates Ltd.
 LANDSCAPE
 ARCHITECTURE



KEY

| | |
|---|--|
|  | 10' OFF-ROAD PATH |
|  | ON-STREET ROUTE - BIKE LANE / SHARROWS |
|  | ALTERNATE ROUTE |

Sheet 1
 Downtown Connector Trail
 Washington Reservation Metropark to East 9th Street
 Slavic Village Development / City of Cleveland
 February, 2013



Existing Conditions



Perspective #1 - East 48th North of Fleet

812 Huron Road, # 421
 Cleveland, Ohio 44115-1126
 p: 216 771-1800
 f: 216 771-1801
 www.mcknightla.com

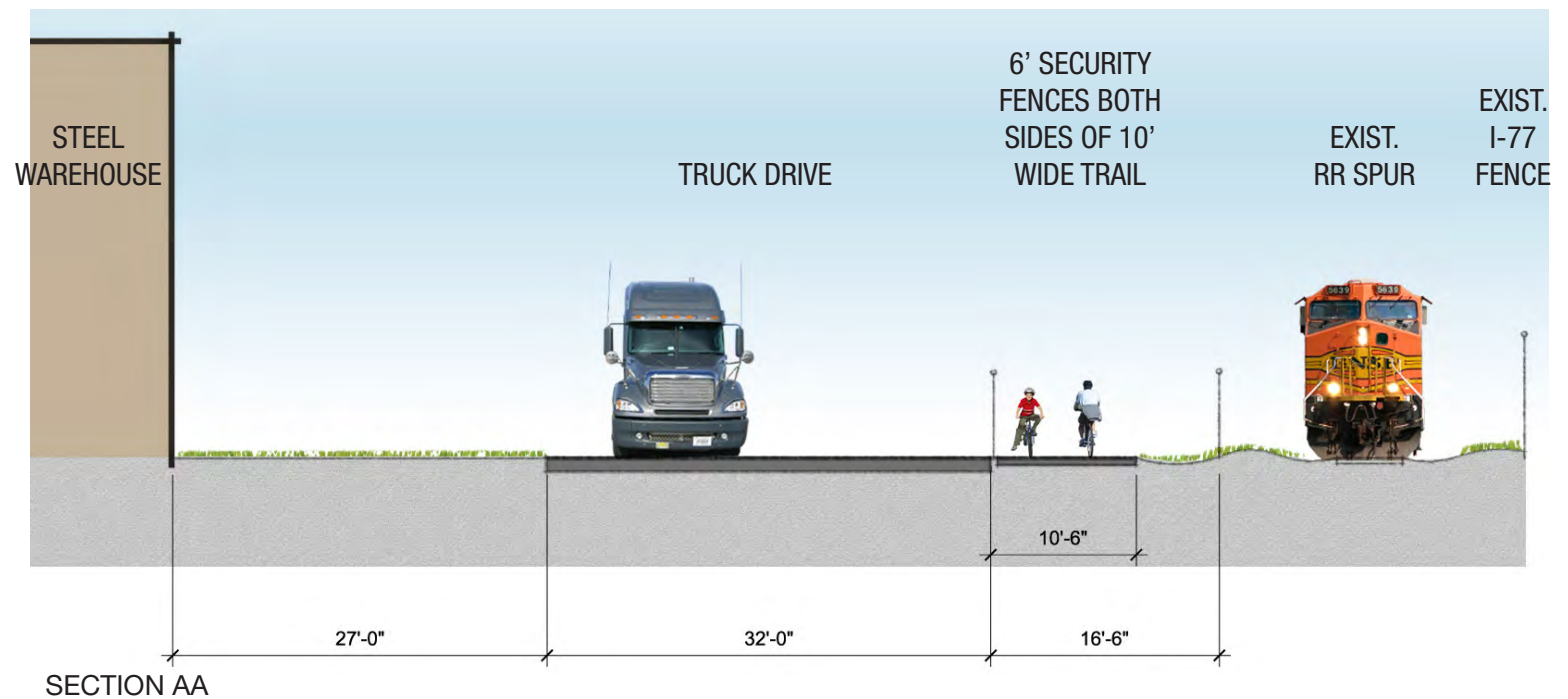
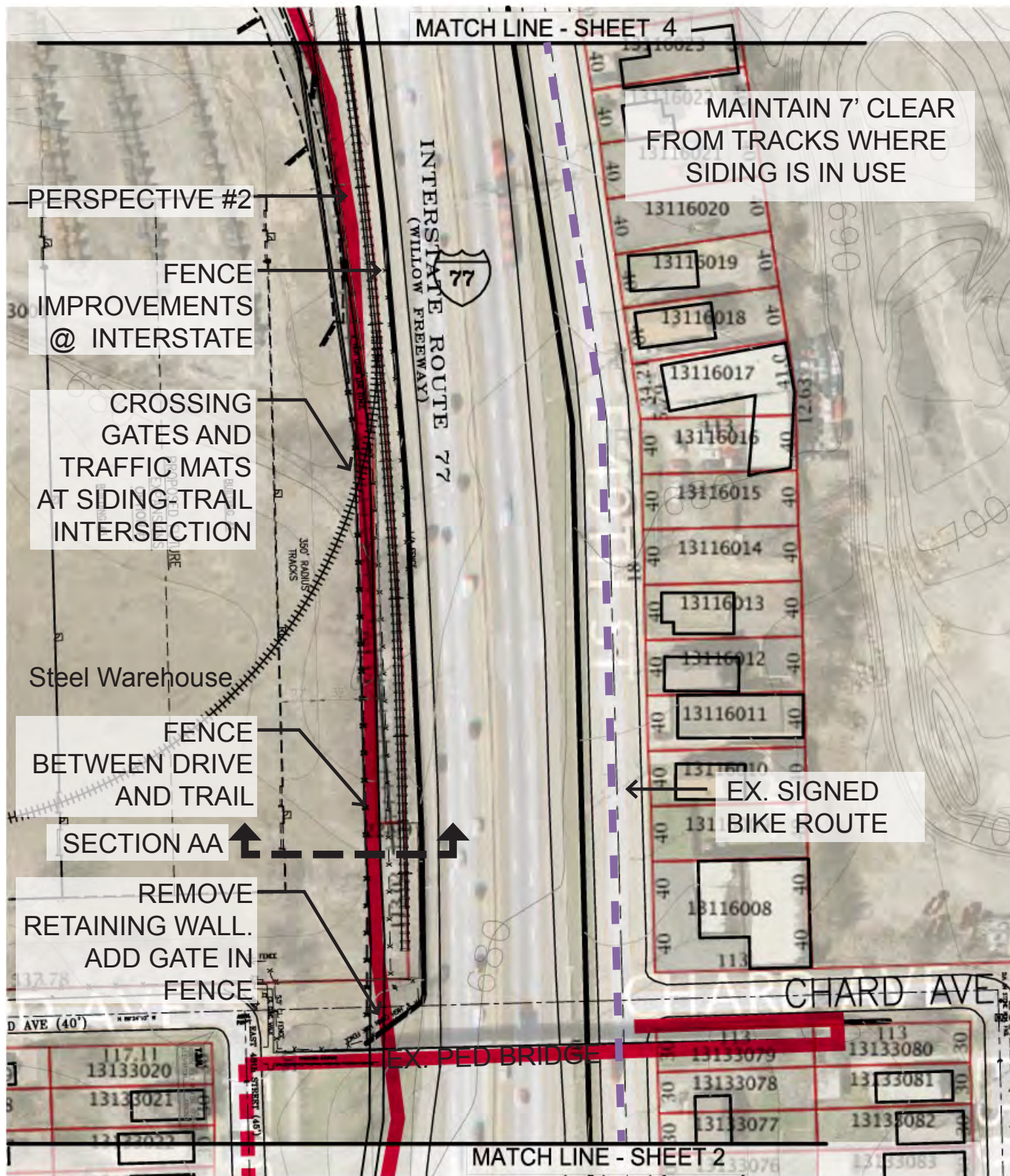
McKnight Associates Ltd.
 LANDSCAPE ARCHITECTURE



KEY

- 10' OFF-ROAD PATH
- ON-STREET ROUTE - BIKE LANE / SHARROWS
- ALTERNATE ROUTE

Sheet 2
 Downtown Connector Trail
 Washington Reservation Metropark to East 9th Street
 Slavic Village Development / City of Cleveland
 February, 2013

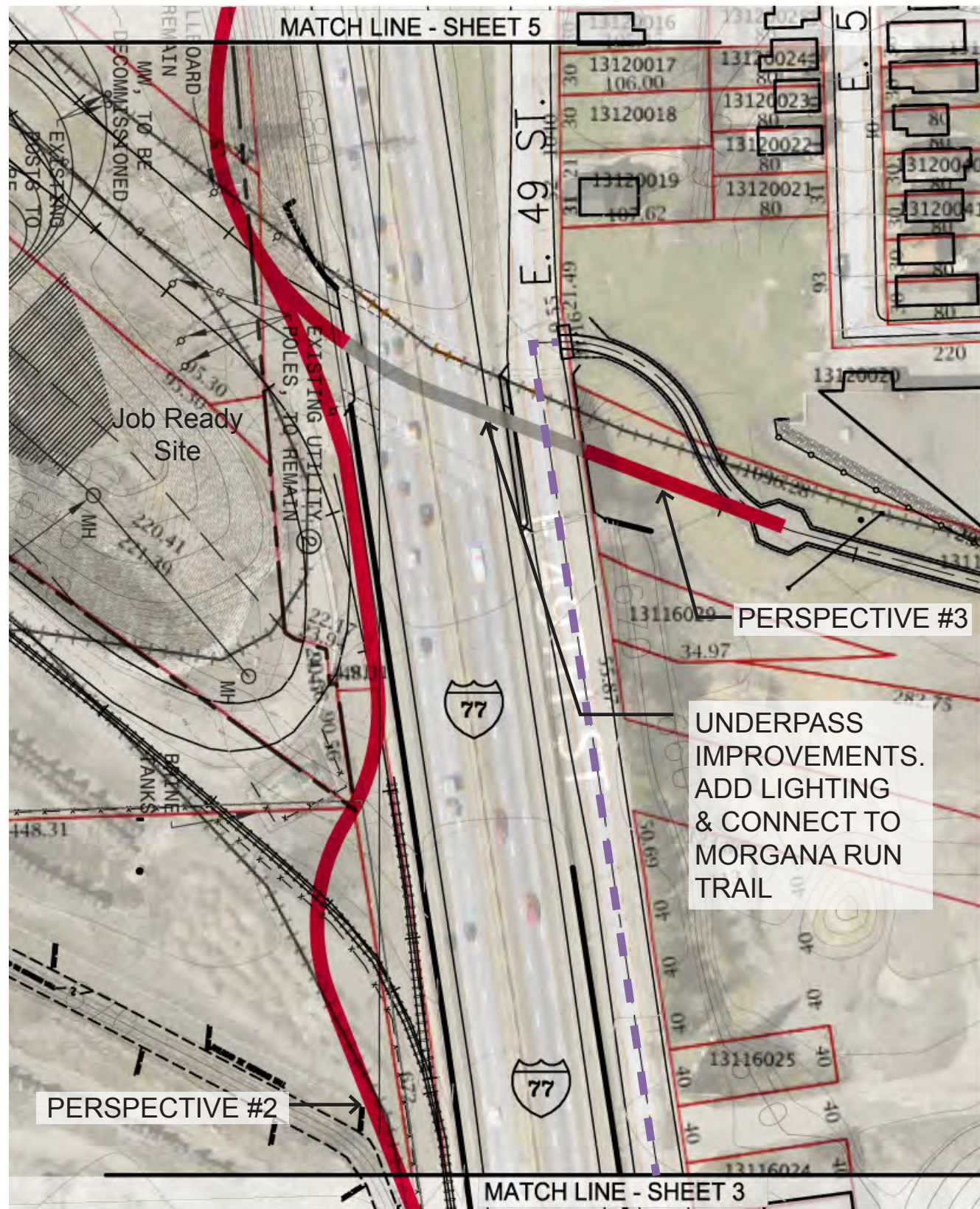


812 Huron Road, # 421
 Cleveland, Ohio 44115-1126
 p: 216 771-1800
 f: 216 771-1801
 www.mcknightla.com

McKnight Associates LTD.
 LANDSCAPE ARCHITECTURE



Sheet 3
 Downtown Connector Trail
 Washington Reservation Metropark to East 9th Street
 Slavic Village Development / City of Cleveland
 February, 2013



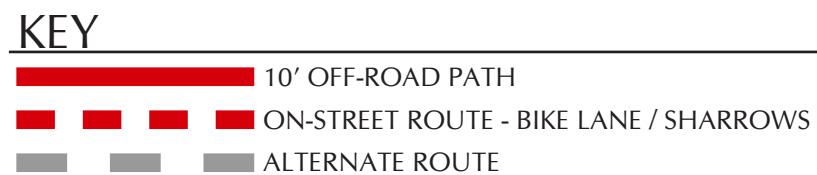
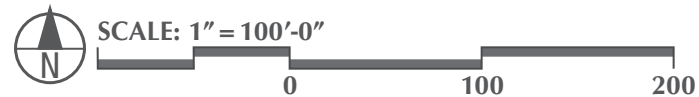
Perspective #2 - West of I-77 / North of Chard
*Similar Condition @ Job Ready Site



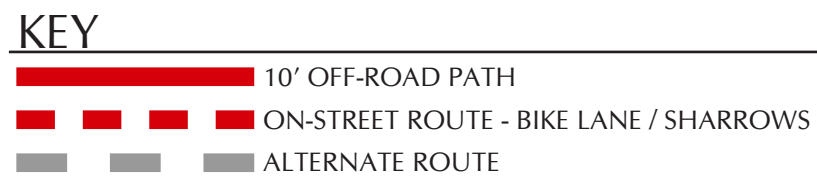
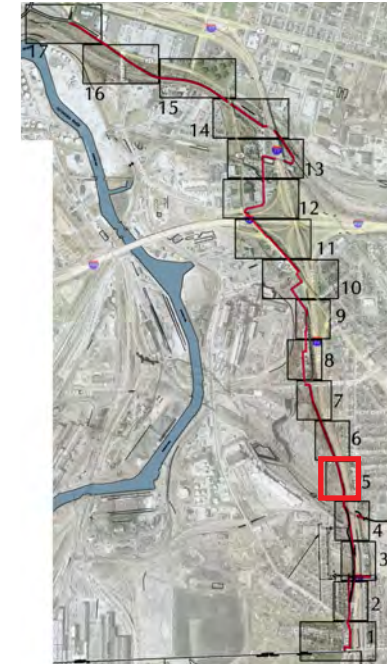
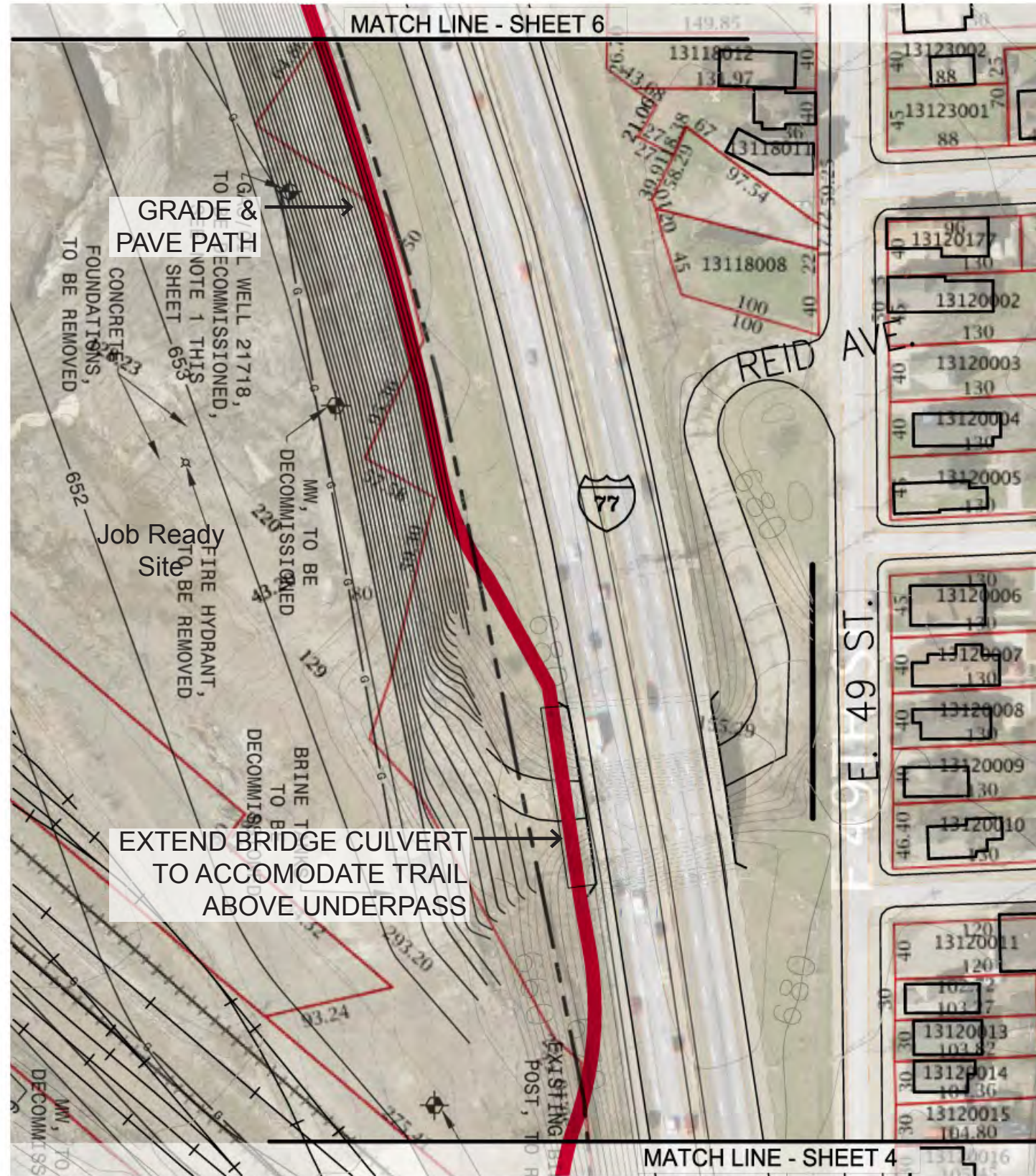
Perspective #3 - Morgana Trail Connection below East 49th

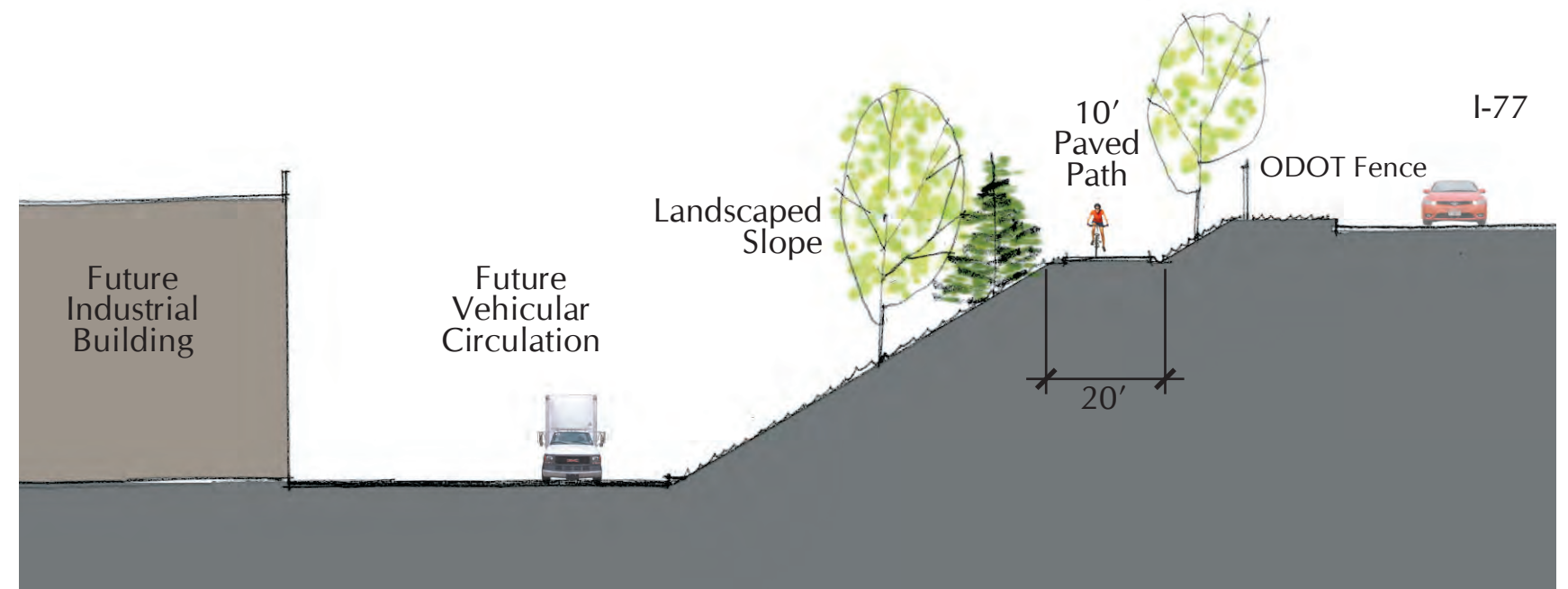
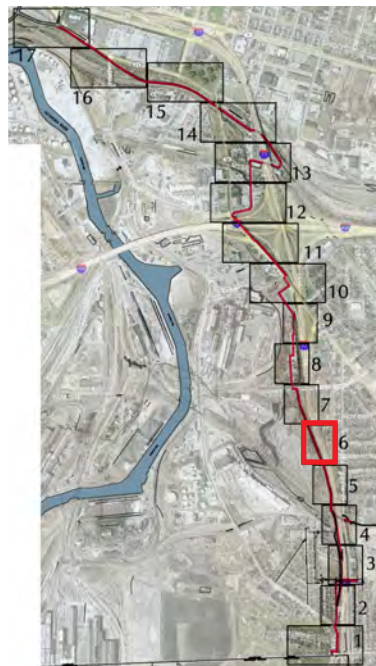
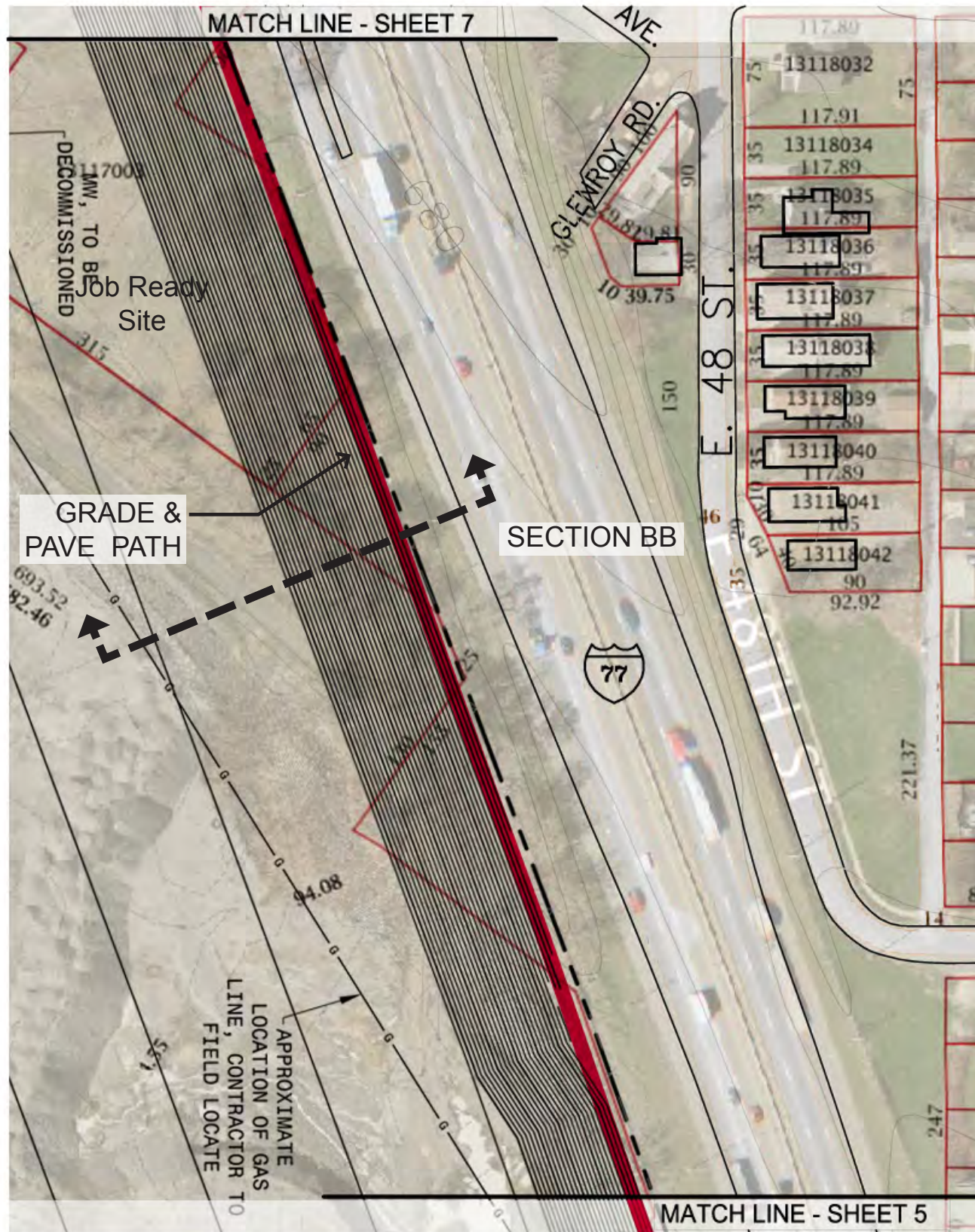
812 Huron Road, # 421
Cleveland, Ohio 44115-1126
p: 216 771-1800
f: 216 771-1801
www.mcknightla.com

McKnight Associates Ltd.
LANDSCAPE ARCHITECTURE



Sheet 4
Downtown Connector Trail
Washington Reservation Metropark to East 9th Street
Slavic Village Development / City of Cleveland
February, 2013

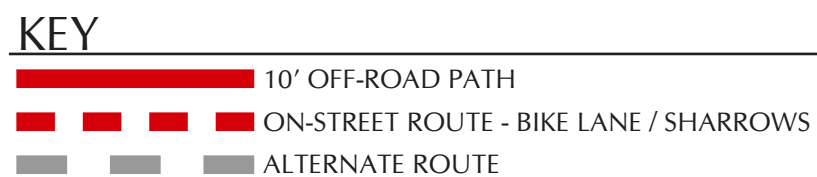




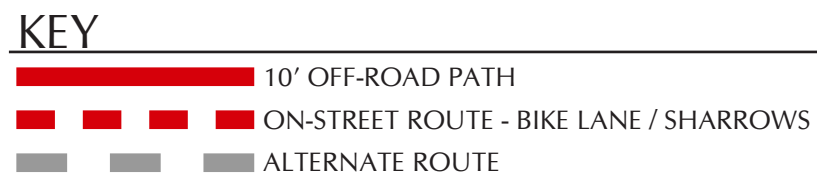
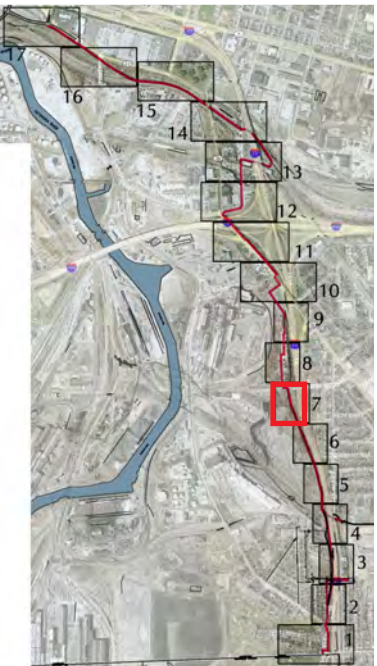
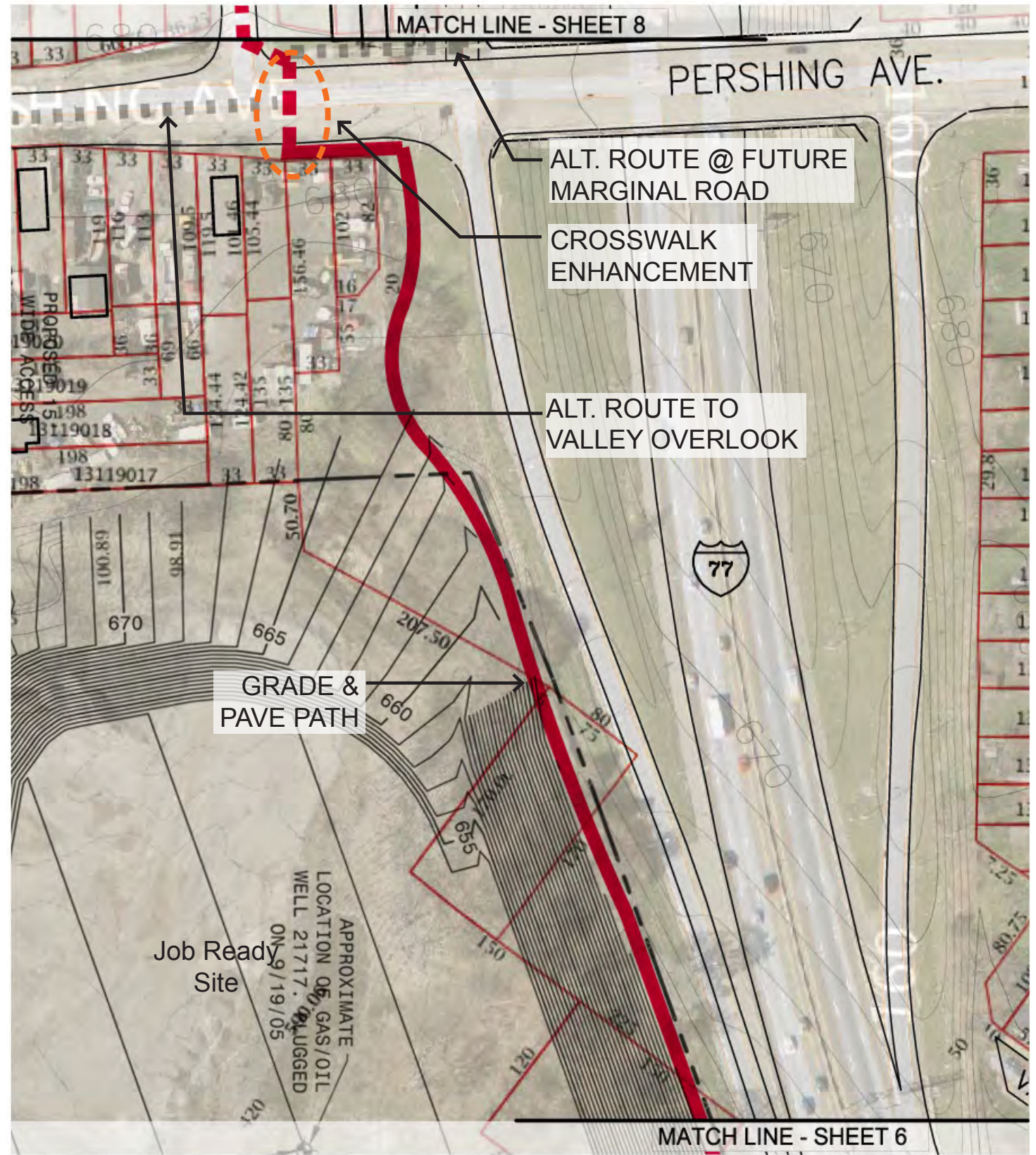
Section BB - Job Ready Site

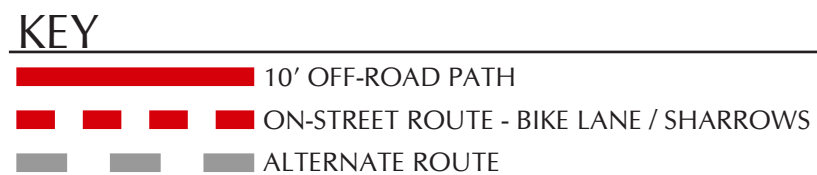
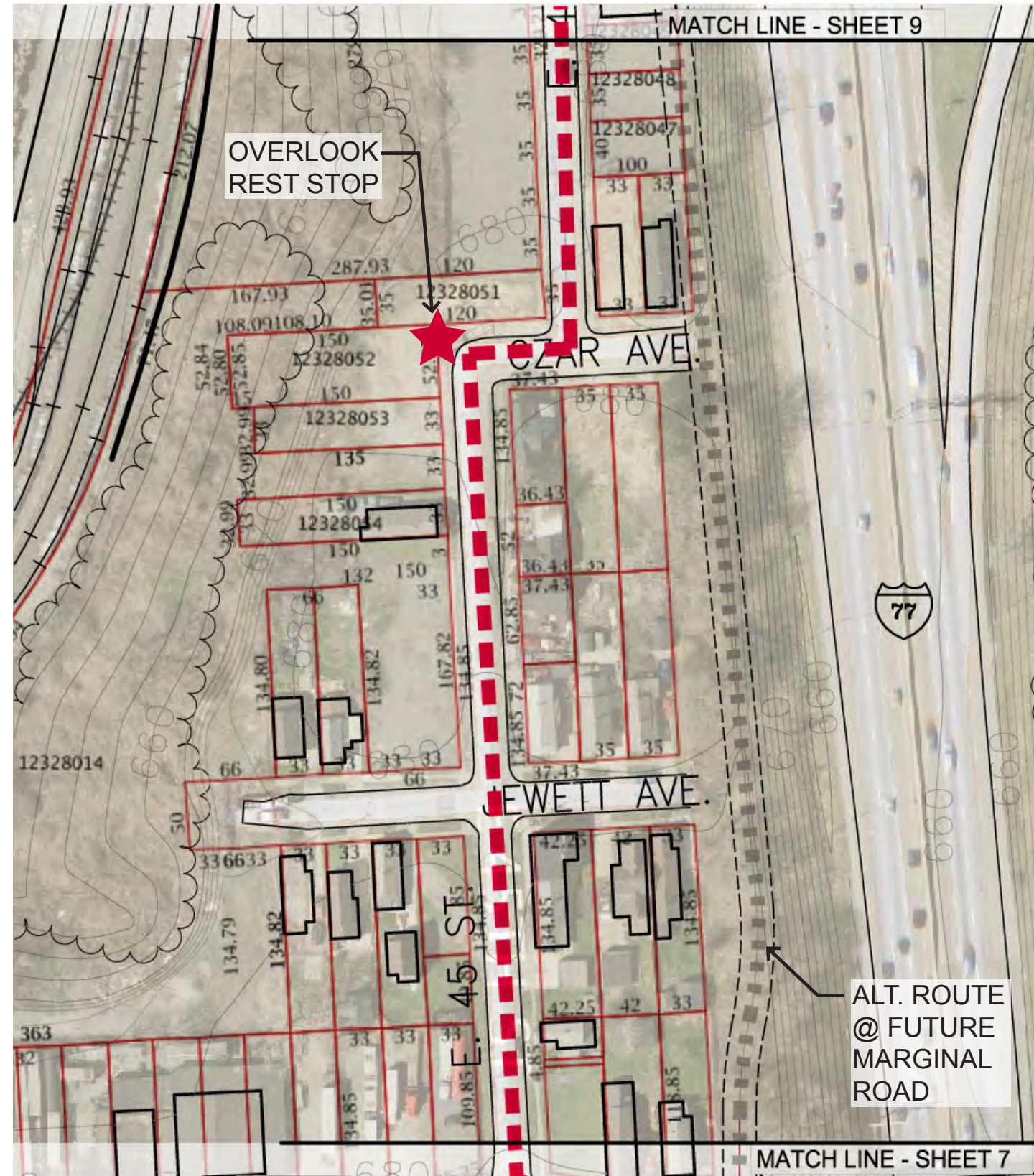
812 Huron Road, # 421
 Cleveland, Ohio 44115-1126
 p: 216 771-1800
 f: 216 771-1801
 www.mcknightla.com

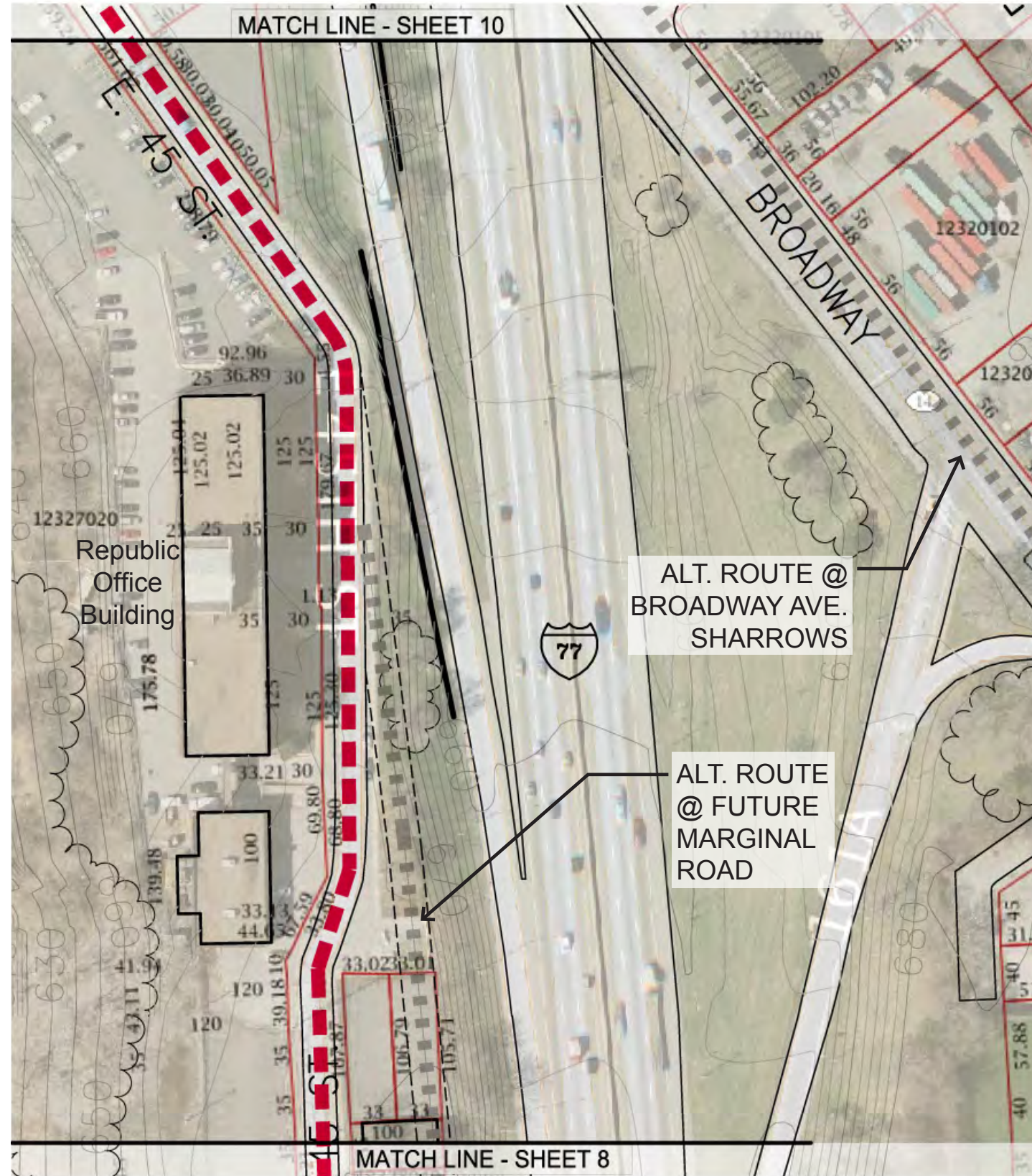
McKnight Associates LTD.
 LANDSCAPE ARCHITECTURE

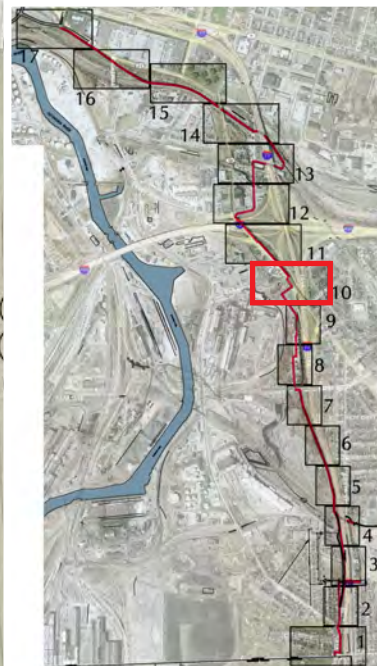
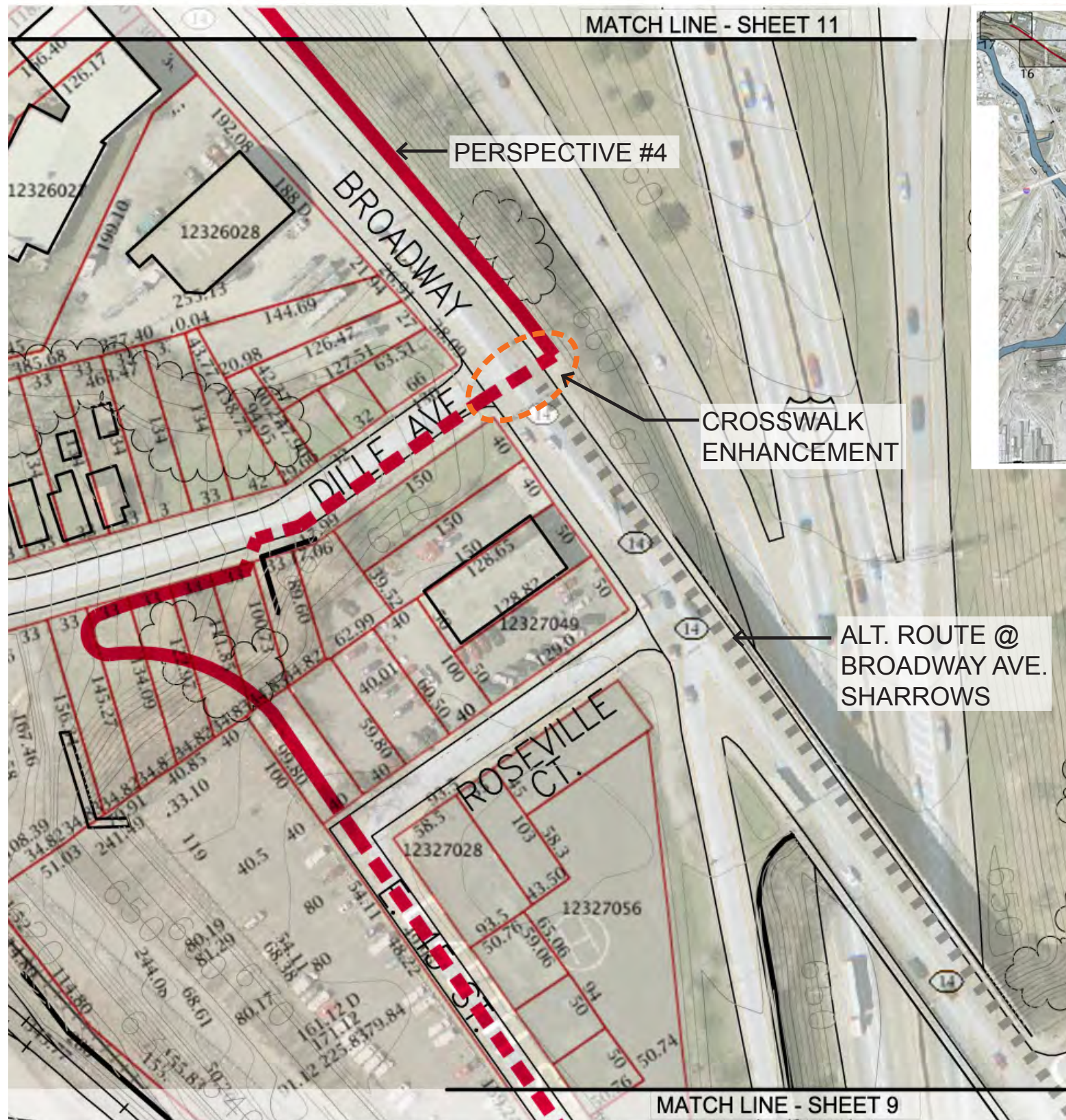


Sheet 6
 Downtown Connector Trail
 Washington Reservation Metropark to East 9th Street
 Slavic Village Development / City of Cleveland
 February, 2013









Existing Conditions



Perspective #4 - Broadway Trail North of Dille

812 Huron Road, # 421
 Cleveland, Ohio 44115-1126
 p: 216 771-1800
 f: 216 771-1801
 www.mcknightla.com

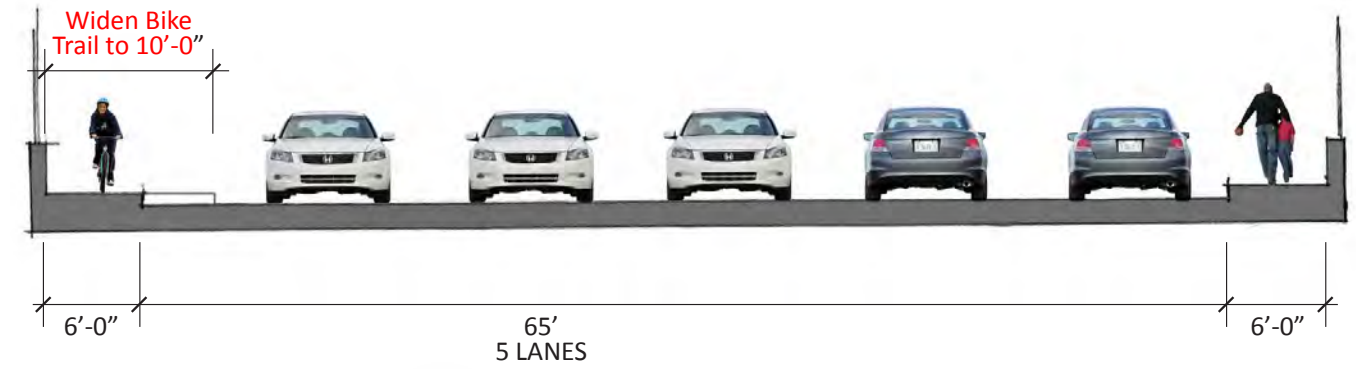
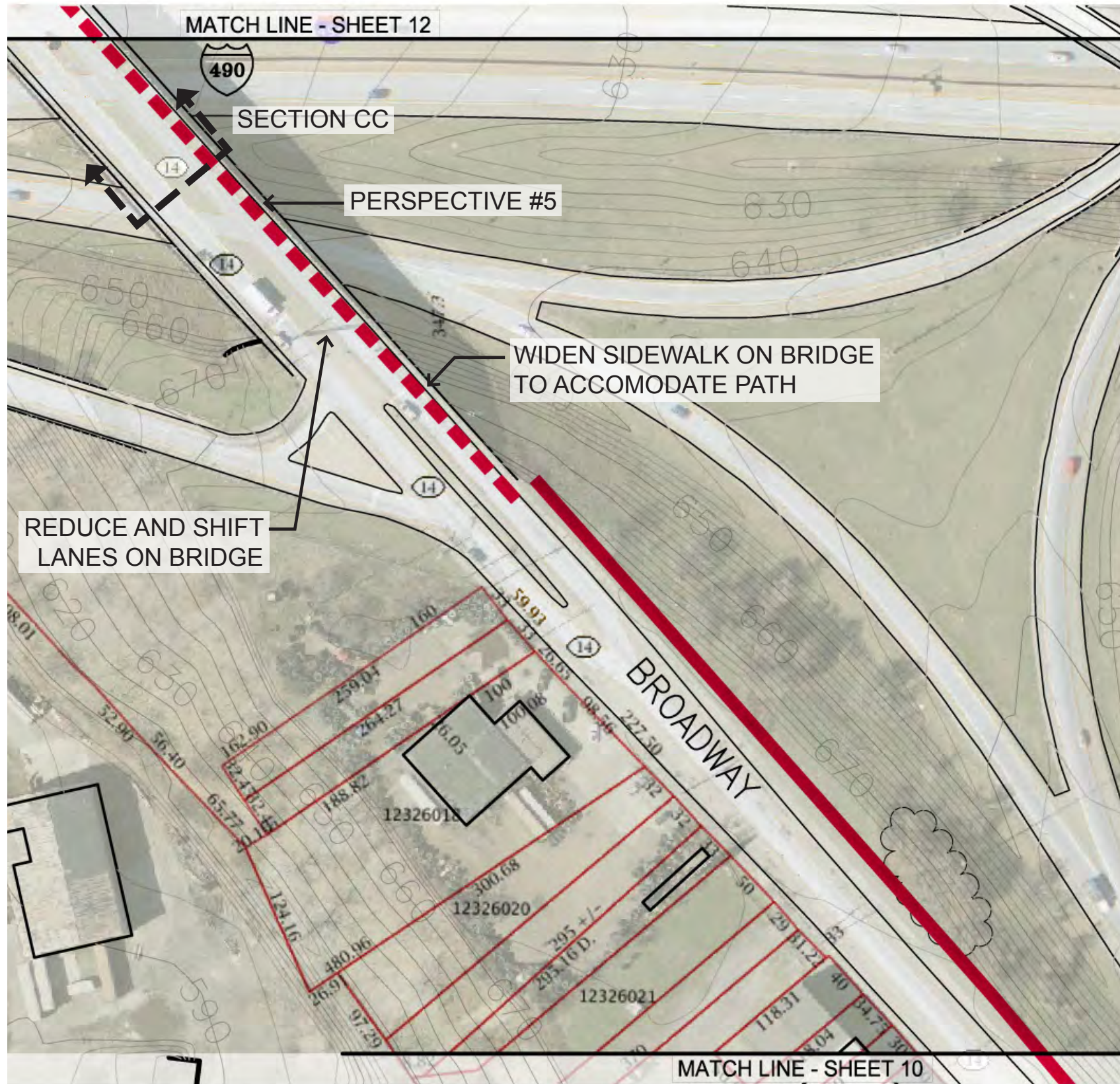
McKnight Associates Ltd.
 LANDSCAPE
 ARCHITECTURE



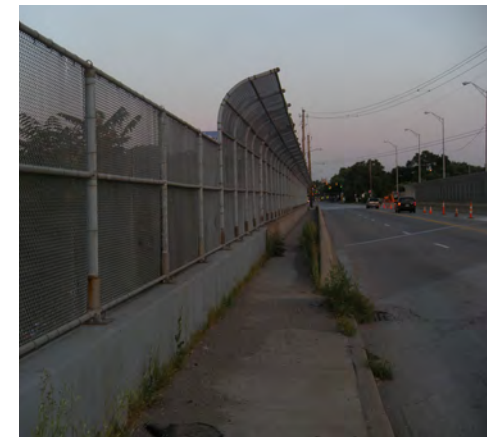
KEY

| | |
|--|--|
| | 10' OFF-ROAD PATH |
| | ON-STREET ROUTE - BIKE LANE / SHARROWS |
| | ALTERNATE ROUTE |

Sheet 10
 Downtown Connector Trail
 Washington Reservation Metropark to East 9th Street
 Slavic Village Development / City of Cleveland
 February, 2013



Section CC - Broadway Bridge



Existing Conditions



Perspective #5 - Broadway Bridge over I-490

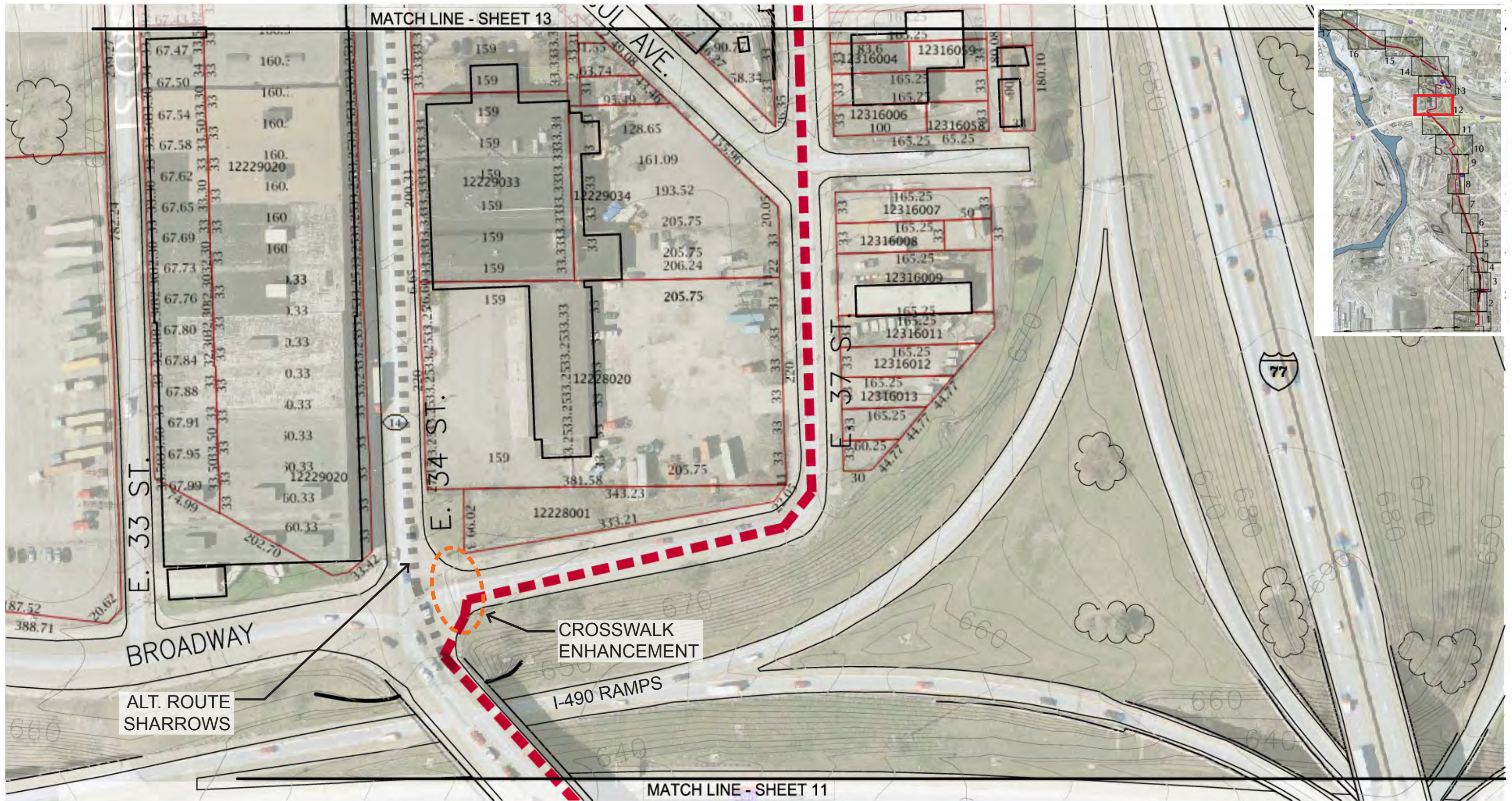
812 Huron Road, # 421
 Cleveland, Ohio 44115-1126
 p: 216 771-1800
 f: 216 771-1801
 www.mcknightla.com

McKnight Associates Ltd.
 LANDSCAPE ARCHITECTURE



- KEY**
- 10' OFF-ROAD PATH
 - ON-STREET ROUTE - BIKE LANE / SHARROWS
 - ALTERNATE ROUTE

Sheet 11
 Downtown Connector Trail
 Washington Reservation Metropark to East 9th Street
 Slavic Village Development / City of Cleveland
 February, 2013






812 Huron Road, # 421
 Cleveland, Ohio 44115-1126
 p: 216 771-1800
 f: 216 771-1801
 www.mcknightla.com

McKnight Associates Ltd.
 LANDSCAPE
 ARCHITECTURE

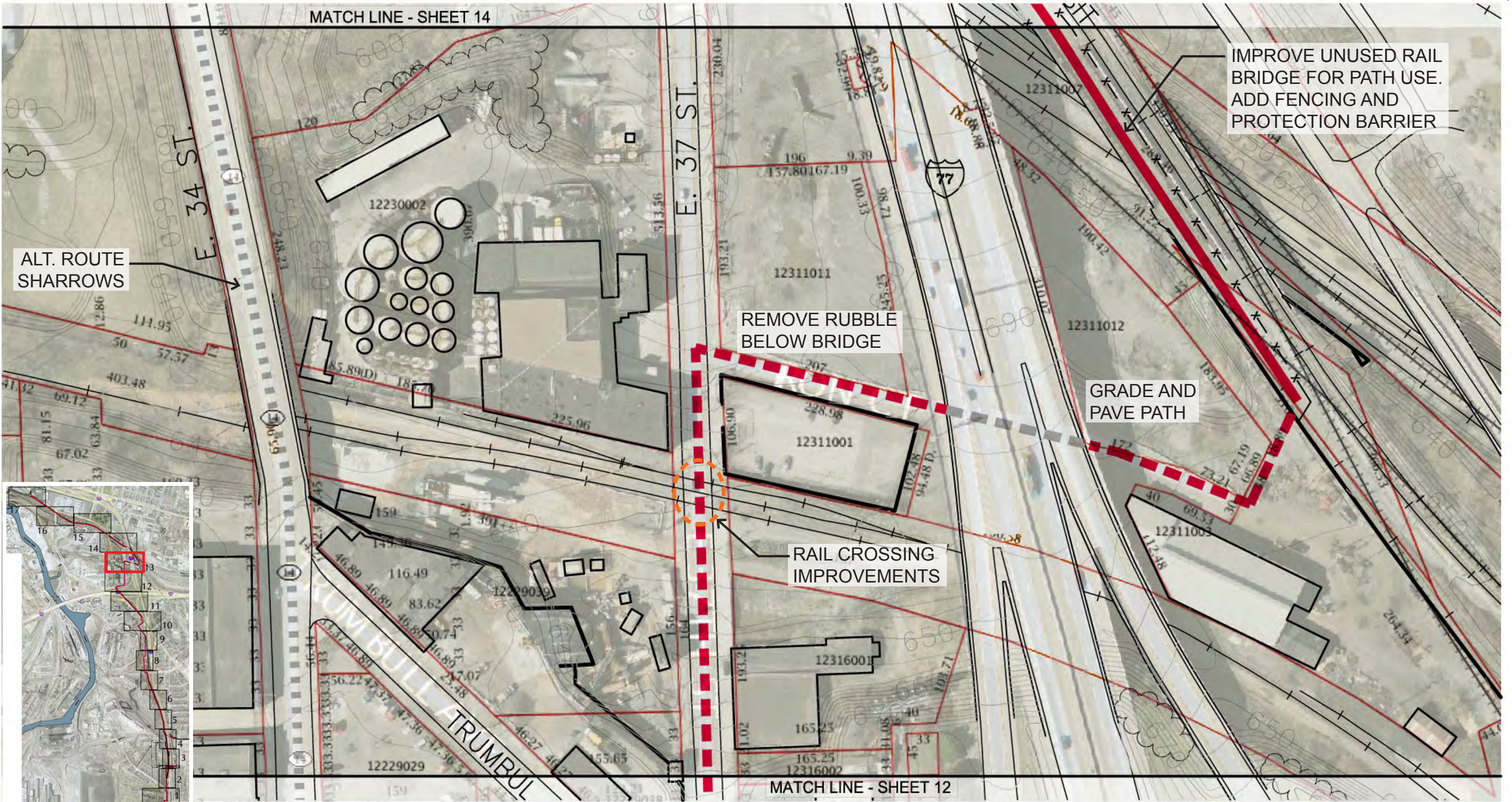


KEY

| | |
|---|--|
|  | 10' OFF-ROAD PATH |
|  | ON-STREET ROUTE - BIKE LANE / SHARROWS |
|  | ALTERNATE ROUTE |

Sheet 12
 Downtown Connector Trail
 Washington Reservation Metropark to East 9th Street
 Slavic Village Development / City of Cleveland
 February, 2013

MATCH LINE - SHEET 14



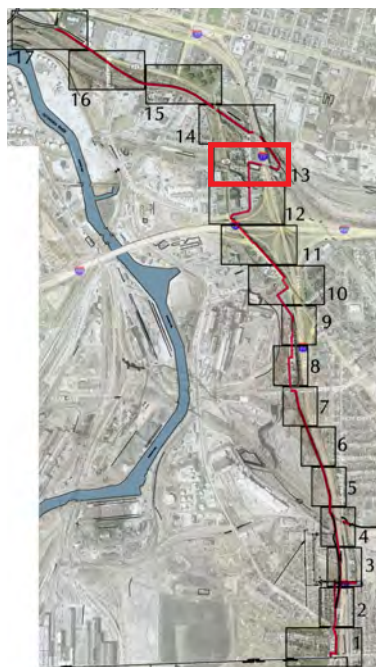
ALT. ROUTE SHARROWS

REMOVE RUBBLE BELOW BRIDGE

RAIL CROSSING IMPROVEMENTS

GRADE AND PAVE PATH

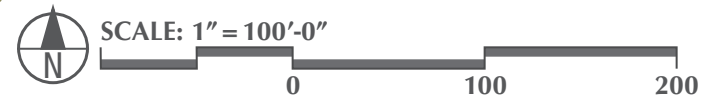
IMPROVE UNUSED RAIL BRIDGE FOR PATH USE. ADD FENCING AND PROTECTION BARRIER



MATCH LINE - SHEET 12

812 Huron Road, # 421
 Cleveland, Ohio 44115-1126
 p: 216 771-1800
 f: 216 771-1801
 www.mcknightla.com

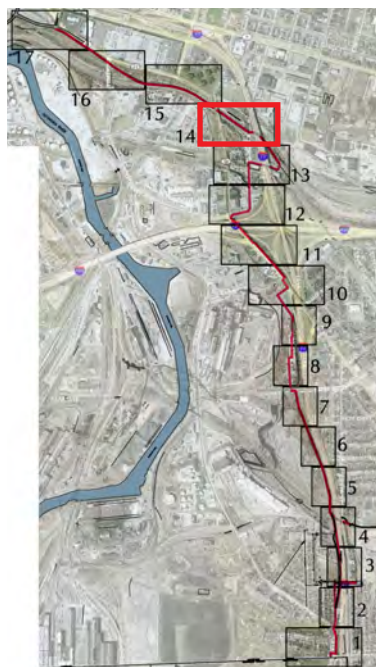
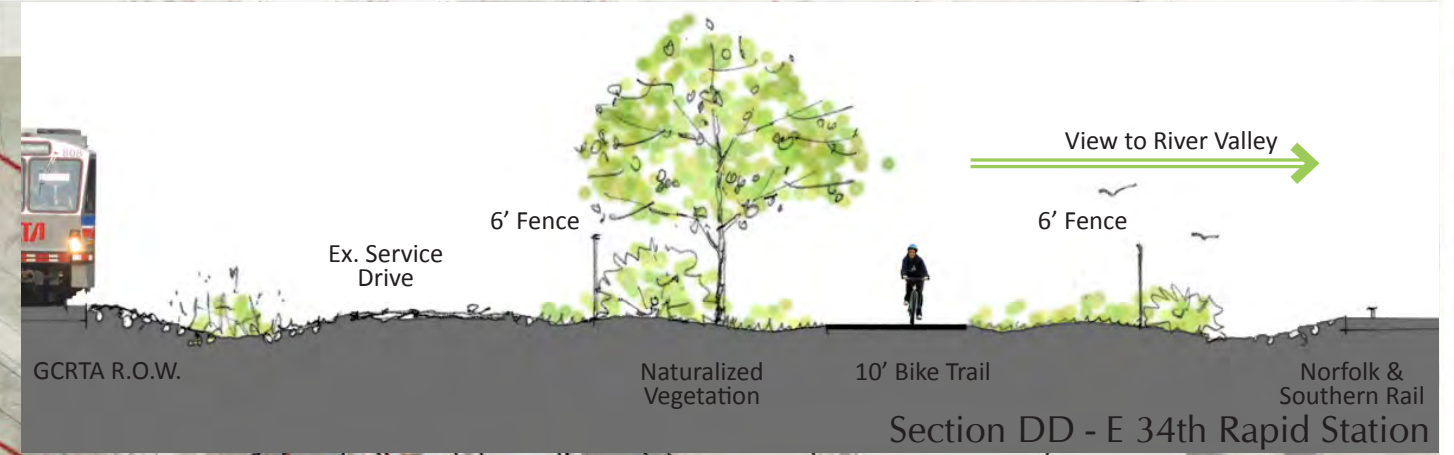
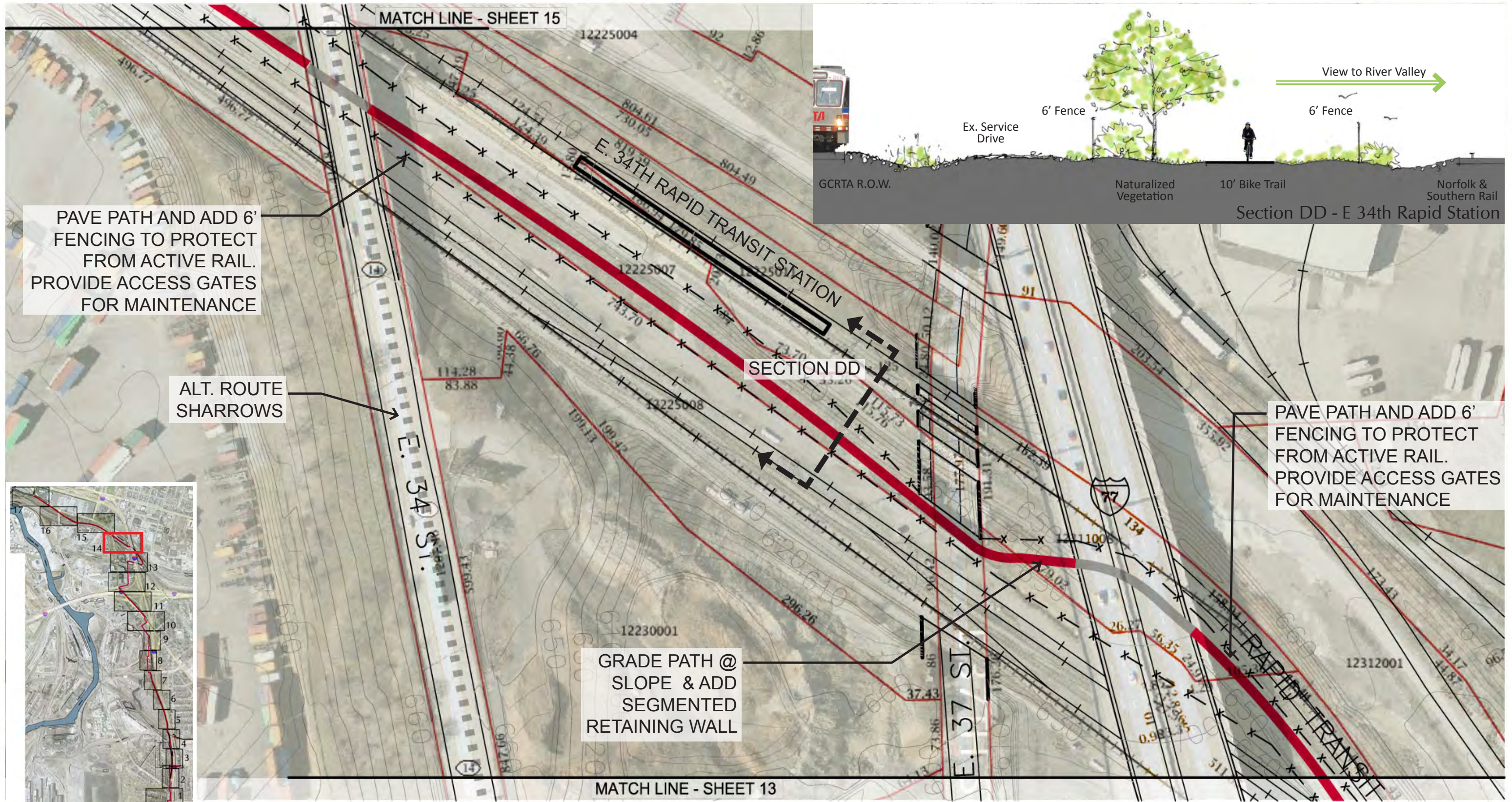
McKnight Associates Ltd.
 LANDSCAPE ARCHITECTURE



KEY

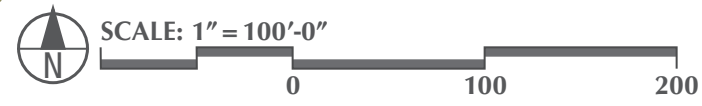
| | |
|--|--|
| | 10' OFF-ROAD PATH |
| | ON-STREET ROUTE - BIKE LANE / SHARROWS |
| | ALTERNATE ROUTE |

Sheet 13
 Downtown Connector Trail
 Washington Reservation Metropark to East 9th Street
 Slavic Village Development / City of Cleveland
 February, 2013



812 Huron Road, # 421
 Cleveland, Ohio 44115-1126
 p: 216 771-1800
 f: 216 771-1801
 www.mcknightla.com

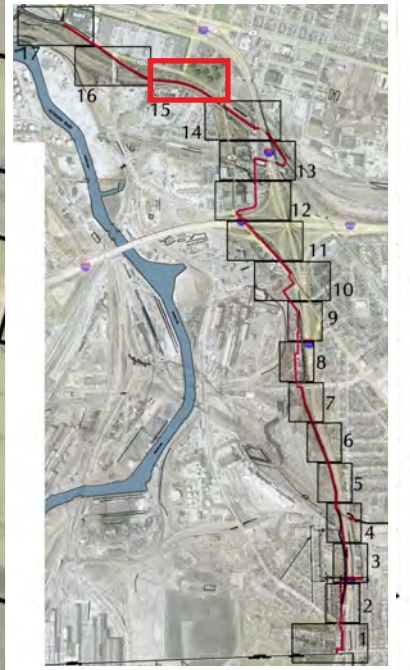
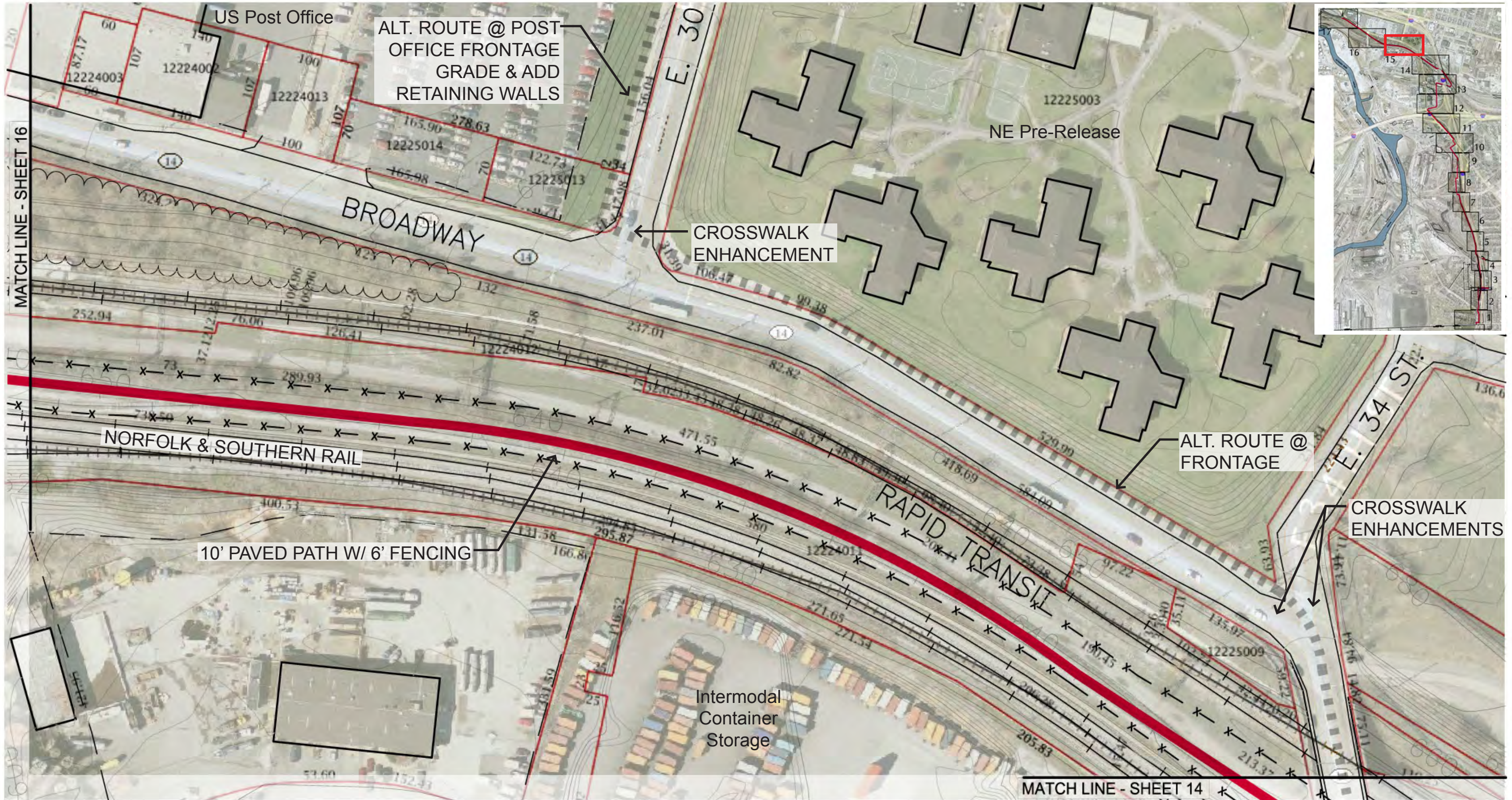
McKnight Associates Ltd.
 LANDSCAPE ARCHITECTURE



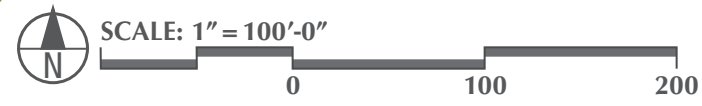
KEY

| | |
|--|--|
| | 10' OFF-ROAD PATH |
| | ON-STREET ROUTE - BIKE LANE / SHARROWS |
| | ALTERNATE ROUTE |




Sheet 14
 Downtown Connector Trail
 Washington Reservation Metropark to East 9th Street
 Slavic Village Development / City of Cleveland
 February, 2013



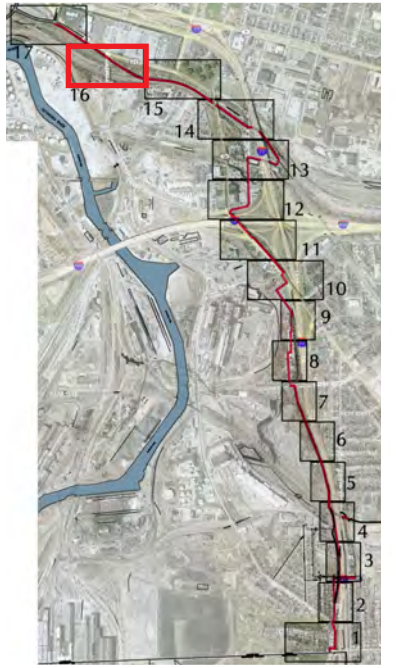
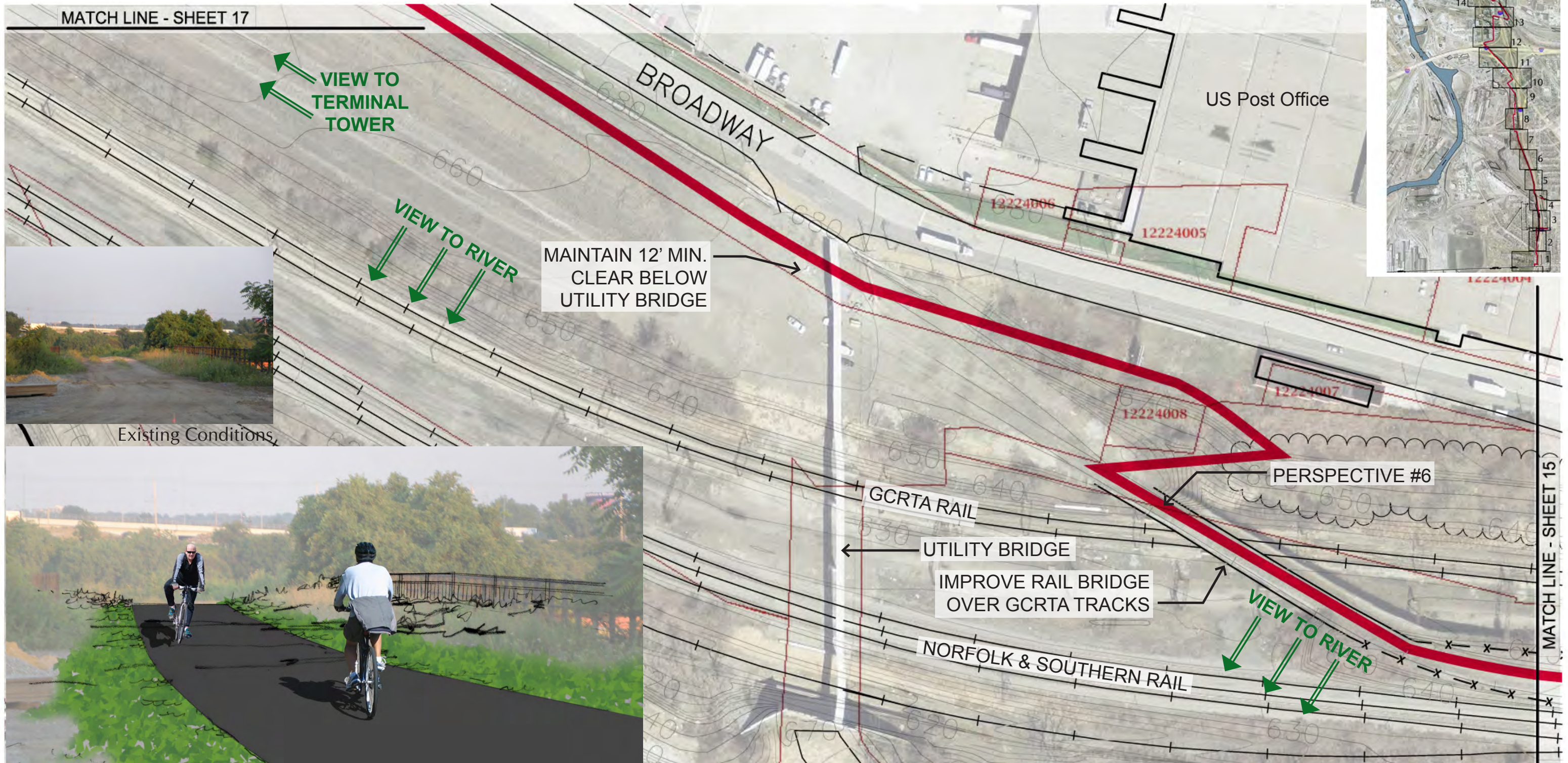

 812 Huron Road, # 421
 Cleveland, Ohio 44115-1126
 p: 216 771-1800
 f: 216 771-1801
 www.mcknightla.com
McKnight Associates Ltd.
 LANDSCAPE ARCHITECTURE



KEY

| | |
|---|--|
|  | 10' OFF-ROAD PATH |
|  | ON-STREET ROUTE - BIKE LANE / SHARROWS |
|  | ALTERNATE ROUTE |

Sheet 15
 Downtown Connector Trail
 Washington Reservation Metropark to East 9th Street
 Slavic Village Development / City of Cleveland
 February, 2013






Perspective #6 - Utilize Abandoned Railway Corridor

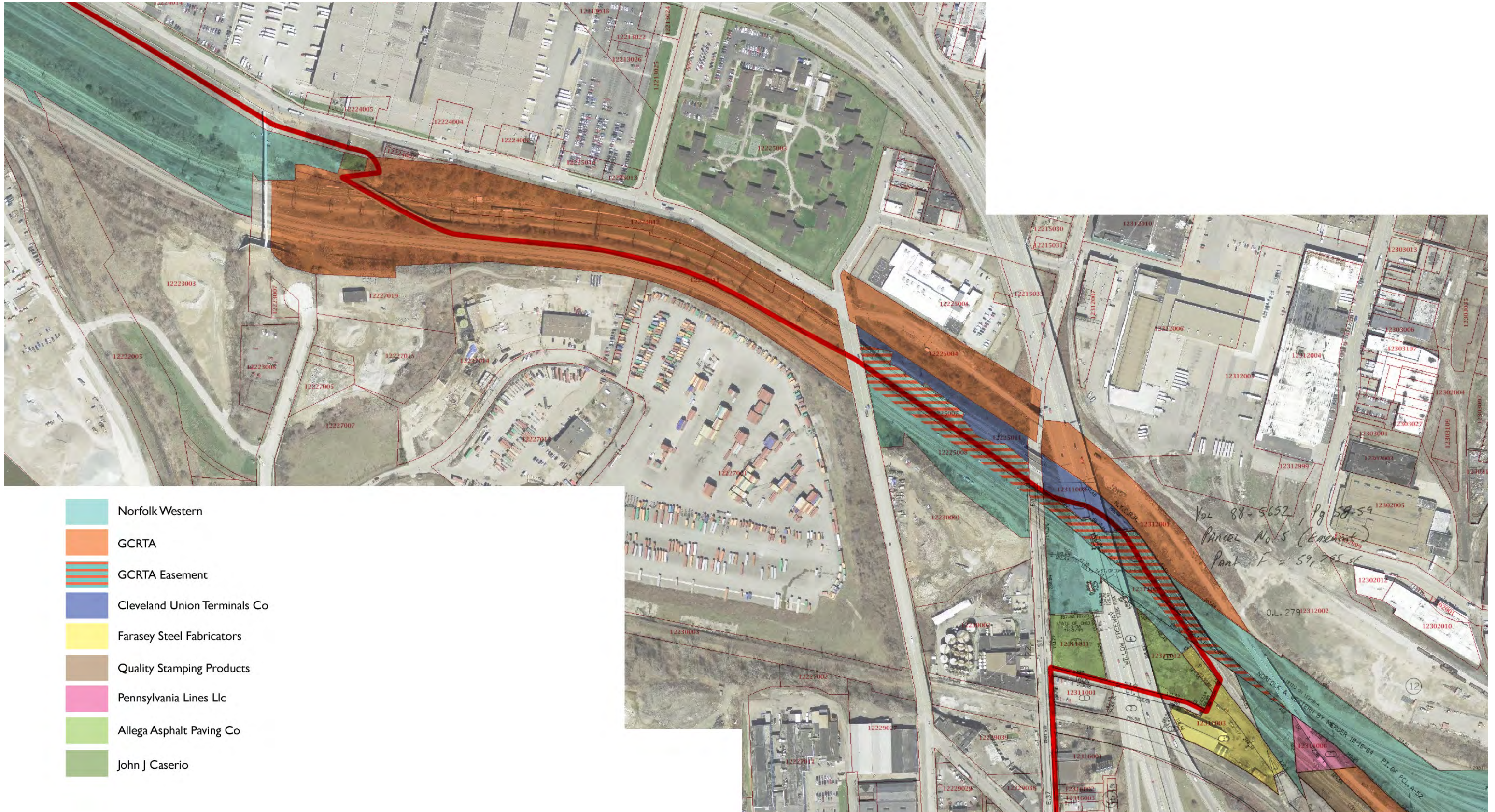

 812 Huron Road, # 421
 Cleveland, Ohio 44115-1126
 p: 216 771-1800
 f: 216 771-1801
 www.mcknightla.com
McKnight Associates Ltd.
 LANDSCAPE ARCHITECTURE



KEY

| | |
|---|--|
|  | 10' OFF-ROAD PATH |
|  | ON-STREET ROUTE - BIKE LANE / SHARROWS |
|  | ALTERNATE ROUTE |

Sheet 16
 Downtown Connector Trail
 Washington Reservation Metropark to East 9th Street
 Slavic Village Development / City of Cleveland
 February, 2013



-  Norfolk Western
-  GCRTA
-  GCRTA Easement
-  Cleveland Union Terminals Co
-  Farasey Steel Fabricators
-  Quality Stamping Products
-  Pennsylvania Lines Llc
-  Allega Asphalt Paving Co
-  John J Caserio

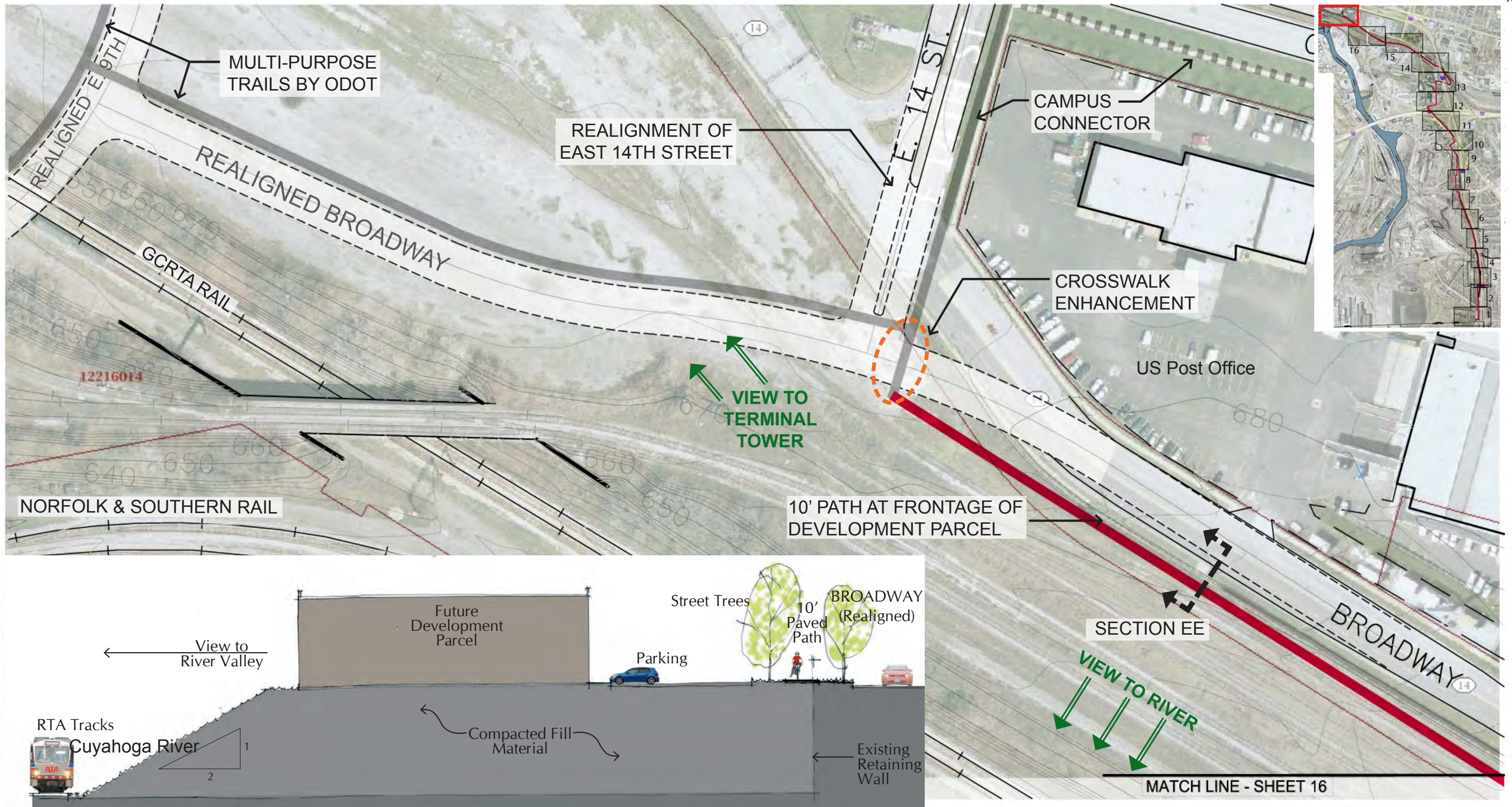

 812 Huron Road, # 421
 Cleveland, Ohio 44115-1126
 p: 216 771-1800
 f: 216 771-1801
 www.mcknightla.com


SCALE: NOT TO SCALE

Rail Corridor Ownership and Easements

Downtown Connector Trail

Washington Reservation Metropark to East 9th Street
 Slavic Village Development / City of Cleveland
 February, 2013





Section EE - Broadway Realignment


 812 Huron Road, # 421
 Cleveland, Ohio 44115-1126
 p: 216 771-1800
 f: 216 771-1801
 www.mcknightla.com
McKnight Associates LTD.
 LANDSCAPE ARCHITECTURE



KEY

| | |
|---|--|
|  | 10' OFF-ROAD PATH |
|  | ON-STREET ROUTE - BIKE LANE / SHARROWS |
|  | ALTERNATE ROUTE |

Sheet 17
 Downtown Connector Trail
 Washington Reservation Metropark to East 9th Street
 Slavic Village Development / City of Cleveland
 February, 2013

December 16, 2010

Slavic Village Development - Downtown Connector Trail

Preliminary Estimate of Probable Construction Costs - Conceptual Design Phase

| Section - Item | Quantity | Unit | Unit Cost | Subtotal | Section Total |
|--|----------|------|--------------|---|-----------------------|
| Metropark Washington Reservation to Pershing Avenue | | | | | |
| Public Right-of-way Improvements | 1,000 | lf | \$25.00 | \$25,000.00 | |
| Off-Road Grade / Pave 10' Path | 3,300 | lf | \$90.00 | \$297,000.00 | |
| Remove Rail / Pave 10' Path | 1,600 | lf | \$120.00 | \$192,000.00 | |
| Improve Fence along I-77 | 700 | lf | \$50.00 | \$35,000.00 | |
| 6' Fence at Job Ready Site | 3,300 | lf | \$35.00 | \$115,500.00 | |
| Rework Concrete Retaining Wall | | ls | \$50,000.00 | \$50,000.00 | |
| Crosswalk Enhancements | 2 | each | \$25,000.00 | \$50,000.00 | |
| Underpass Improvements @ I-77 E49 | | ls | \$250,000.00 | \$250,000.00 | |
| Landscape Restoration | | ls | \$25,000.00 | \$25,000.00 | \$1,039,500.00 |
| Pershing Avenue to East 37th Rail Crossing | | | | | |
| Public Right-of-way Improvements | 3,300 | lf | \$25.00 | \$82,500.00 | |
| Off-Road Trail-Grade / Pave 10' Path | 1,100 | lf | \$90.00 | \$99,000.00 | |
| Rail Crossing at E37th | | ls | \$250,000.00 | \$250,000.00 | |
| Czar Avenue Mill Overlook | | ls | \$150,000.00 | \$150,000.00 | |
| Crosswalk Enhancements | 3 | each | \$25,000.00 | \$75,000.00 | |
| Broadway Bridge Improvements @ I-490 | | ls | \$350,000.00 | \$350,000.00 | |
| Landscape Improvements at Broadway | | ls | \$35,000.00 | \$35,000.00 | \$1,041,500.00 |
| East 37th to East Ninth Street | | | | | |
| Off-Road Grade / Pave 10' Path | 200 | lf | \$90.00 | \$18,000.00 | |
| Remove Rubble / Grade / Pave | 1,000 | lf | \$150.00 | \$150,000.00 | |
| Pave 10' Path | 6,000 | lf | \$75.00 | \$450,000.00 | |
| Grade / Pave 6' Connector Path | 500 | lf | \$75.00 | \$37,500.00 | |
| Rail Bridge Improvements | 650 | lf | \$500.00 | \$325,000.00 | |
| 6' Protection Fence at Active Rail | 9,100 | lf | \$40.00 | \$364,000.00 | |
| Segmented Retaining Wall | 100 | lf | \$250.00 | \$25,000.00 | |
| Crosswalk Enhancements | 3 | each | \$25,000.00 | \$75,000.00 | |
| Landscape Improvements | | ls | \$150,000.00 | \$150,000.00 | \$1,594,500.00 |
| | | | | Downtown Connector Trail Total | \$3,675,500.00 |
| | | | | Contingency (10%) | \$367,550.00 |
| | | | | Design and Engineering (10%) | \$367,550.00 |
| | | | | Total Budget including Engineering | \$4,410,600.00 |