



Cleveland  
Metroparks

**COME OUT  
AND PLAY**



## GOAL: CONNECTIONS



ADVANCE CONNECTIONS AND TRAIL SYSTEMS THAT COMPLETE THE EMERALD NECKLACE AND, IN PARTNERSHIP WITH OTHER AGENCIES AND COMMUNITIES, CONNECT WITH LOCAL, STATE AND REGIONAL TRAIL NETWORKS, COMMUNITIES AND PLACES OF INTEREST.

### STRATEGIC ACTIONS:

- **PLAN, PRIORITIZE AND IMPLEMENT:**

Utilize Cleveland Metroparks Trail Master Plan, Trail Matrix, Reservation Plans, community-based TLCI grants, and other partnerships to identify, design, and implement a range of greenways, trail connections, and experiences.

- **EXPAND USER BASE:**

Expand park, greenway, and trail recreational experiences for a range of users.

- **WAYFINDING:**

Assist visitors, enhance brand, and improve experiences through effective maps, signage, and wayfinding. Develop standard signage manual and implement system-wide improvements. Assure compliance with standards.







Cleveland  
Metroparks

**COME OUT  
AND PLAY**



# Walk Shed & Bike Shed Analysis

Board of Park Commissioners Meeting

July 9, 2015



Cleveland  
Metroparks

COME OUT  
AND PLAY



# Purpose

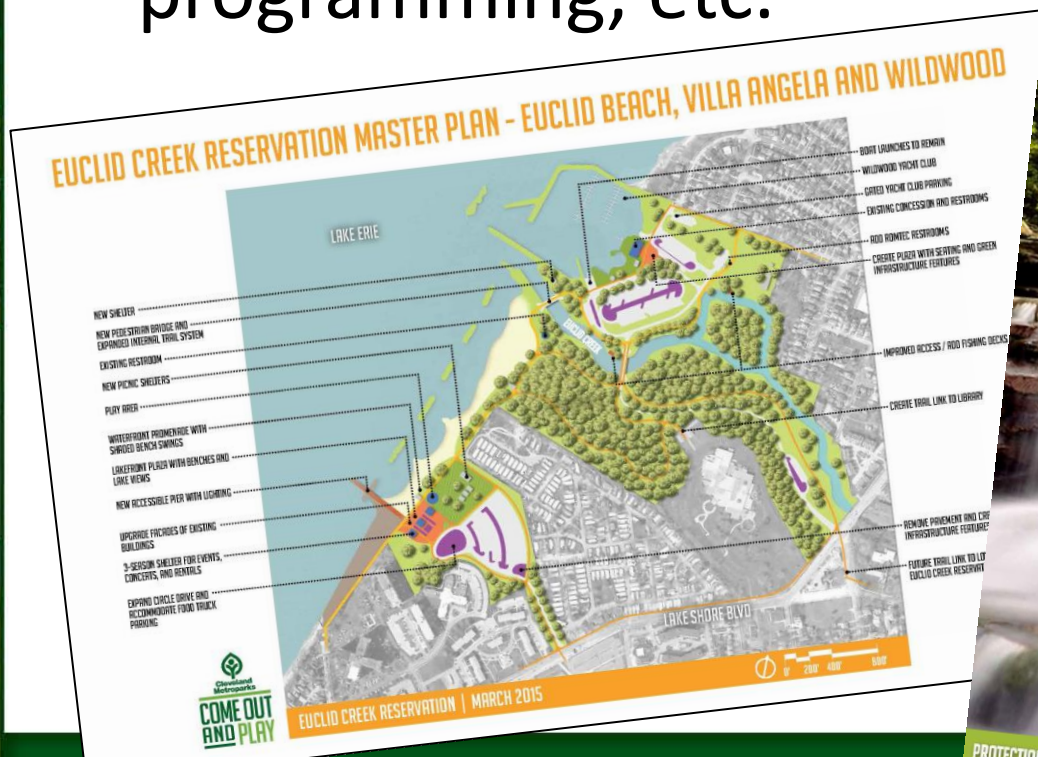
- Visualize access to Cleveland Metroparks Reservations at existing entry points
- Gather demographic information for each reservation





# Purpose

- Input for regional and neighborhood connections, Master Planning, grants, programming, etc.





Cleveland  
Metroparks

COME OUT  
AND PLAY



# Process

## INPUTS

- Trails information/Entry points (CM)
- Reservation boundaries (CM)
- Sidewalk inventory (NOACA)
- Bicycle suitability data (NOACA)
- Roadway network (Open Street Map)
- Demographic information (US Census ACS 2009-2013 Block Groups)

## ANALYSIS

Network  
Analysis  
(pgRouting)

## OUTPUTS

- ½ Mile Walk Shed
- 3 Mile Bike Shed
- Demographics for Sheds



Cleveland  
Metroparks

COME OUT  
AND PLAY



# About the Analysis

- Planning level assessment
- Distance covered in 15 minutes based on Federal guidance
  - ½ mile walking
  - 3 miles bicycling
- Sidewalks and street assumptions
- Entry point assumptions
  - Walk only
  - Bike and walk





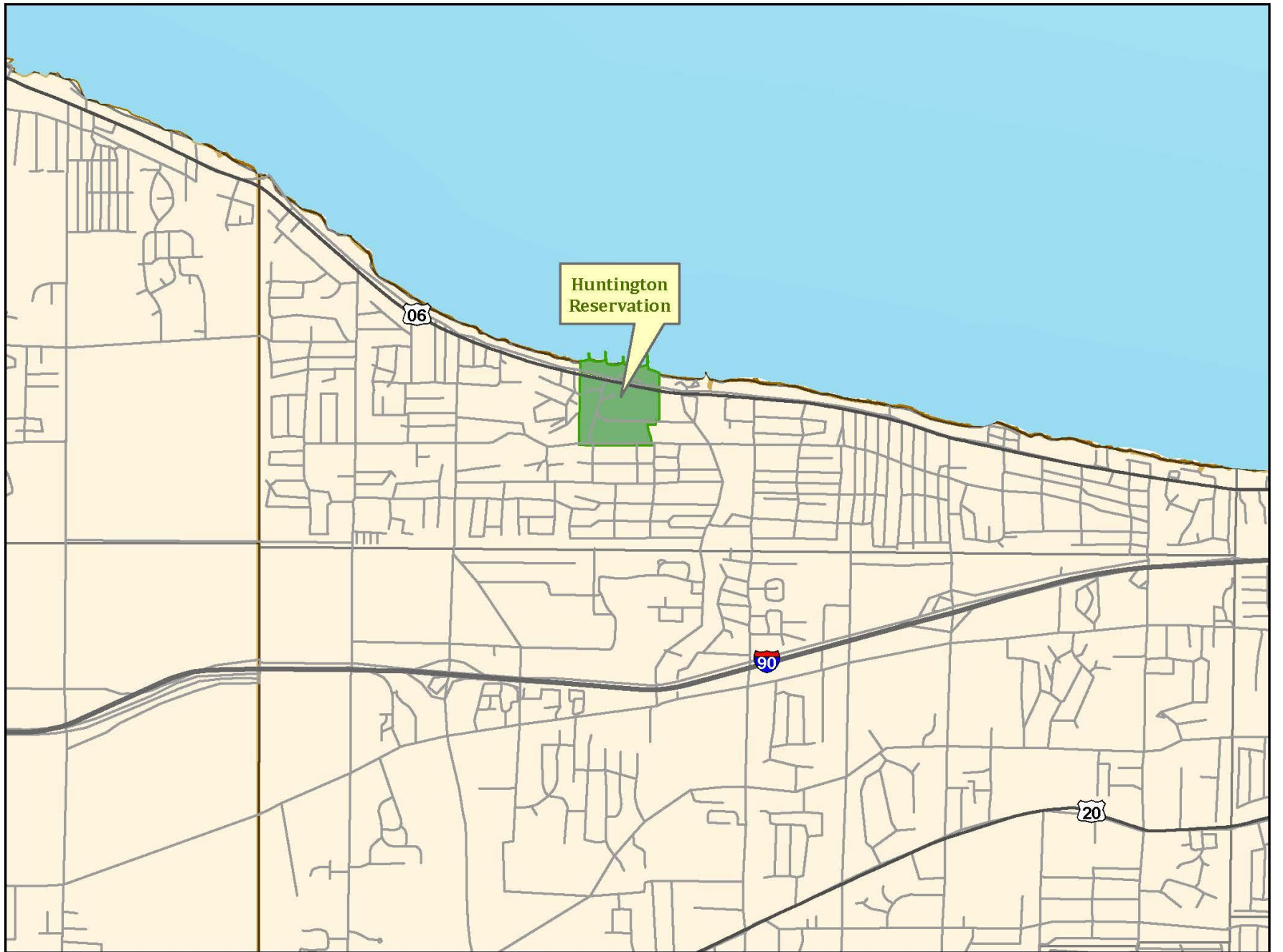
Cleveland  
Metroparks

COME OUT  
AND PLAY

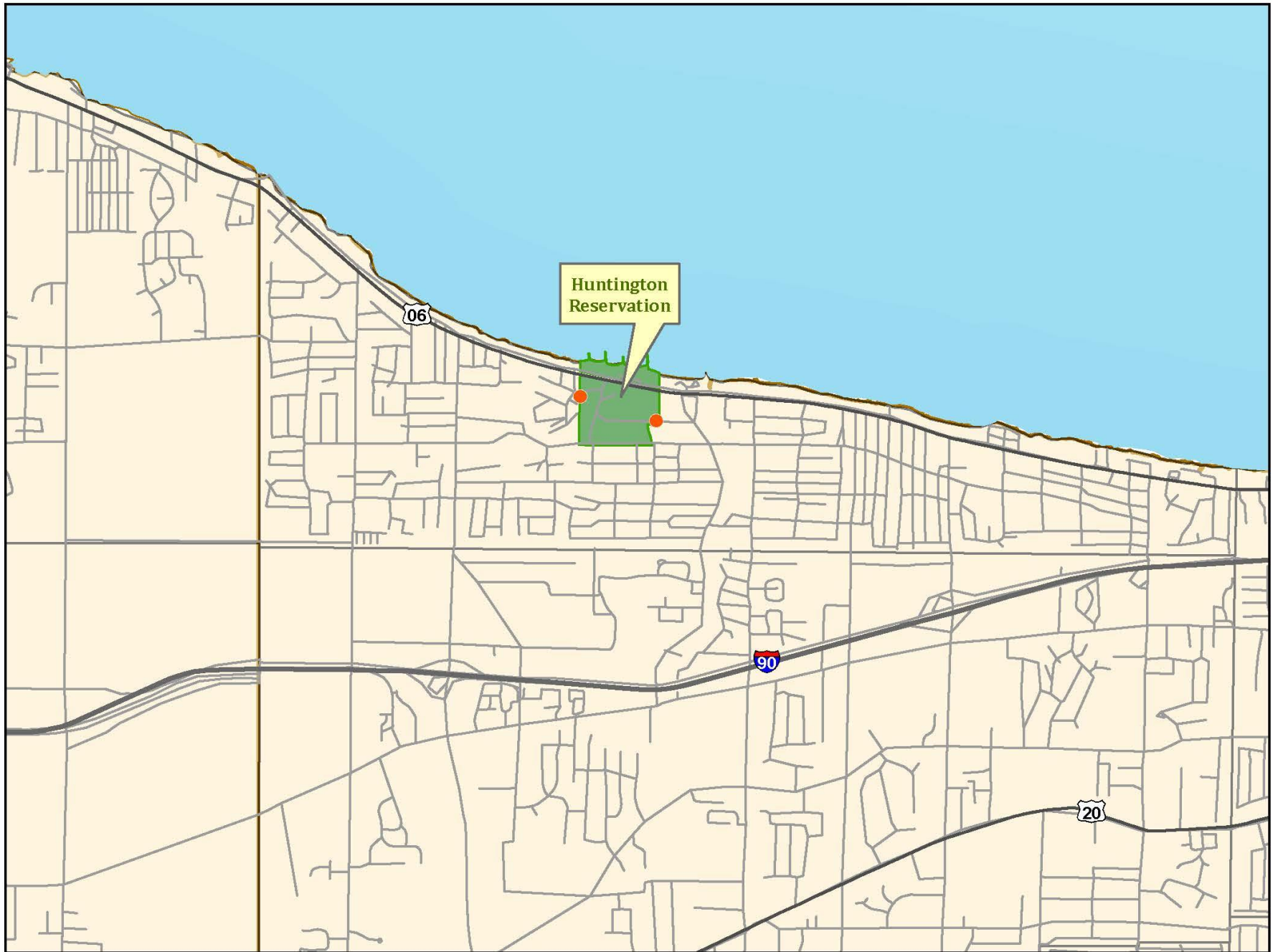


# Demographics

- Block group level data
- Similar to the 2014 Demographic Analysis & Recreation and Leisure Trend Report, information gathered on:
  - Population characteristics
  - Diversity
  - Housing
  - Income
  - Educational attainment
  - Commuting characteristics





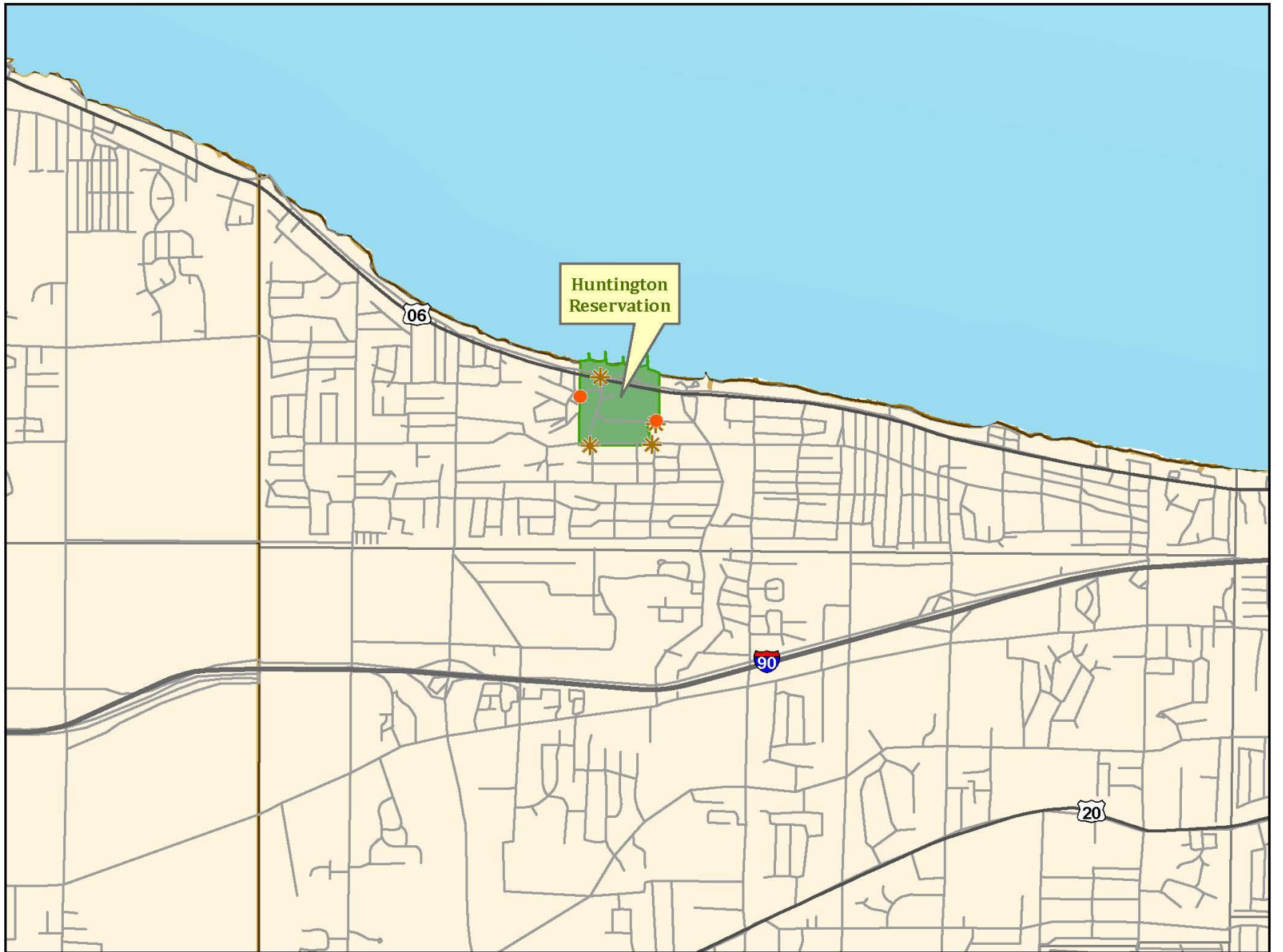


Huntington  
Reservation

06

90

20



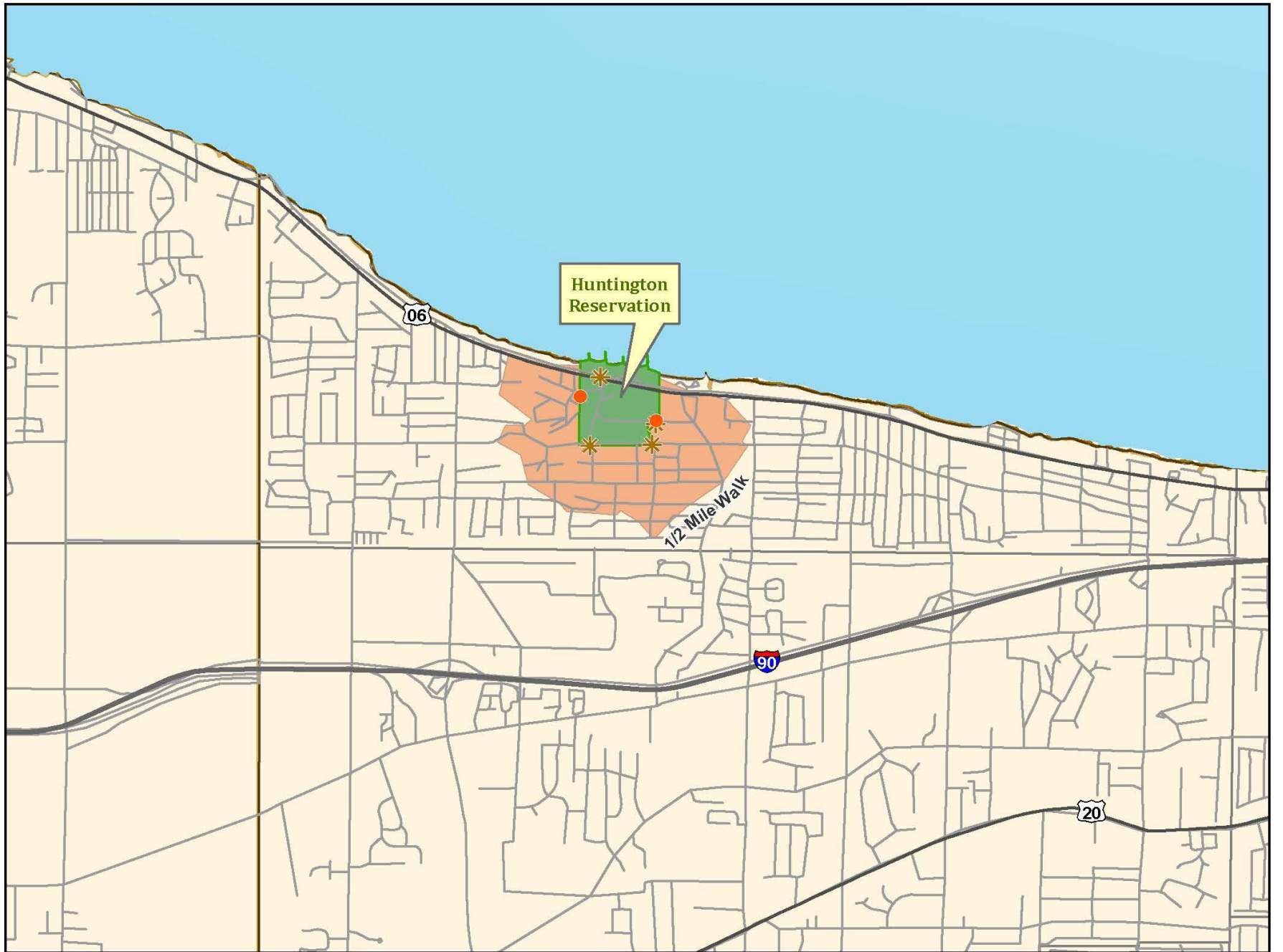
Huntington  
Reservation

06

90

20





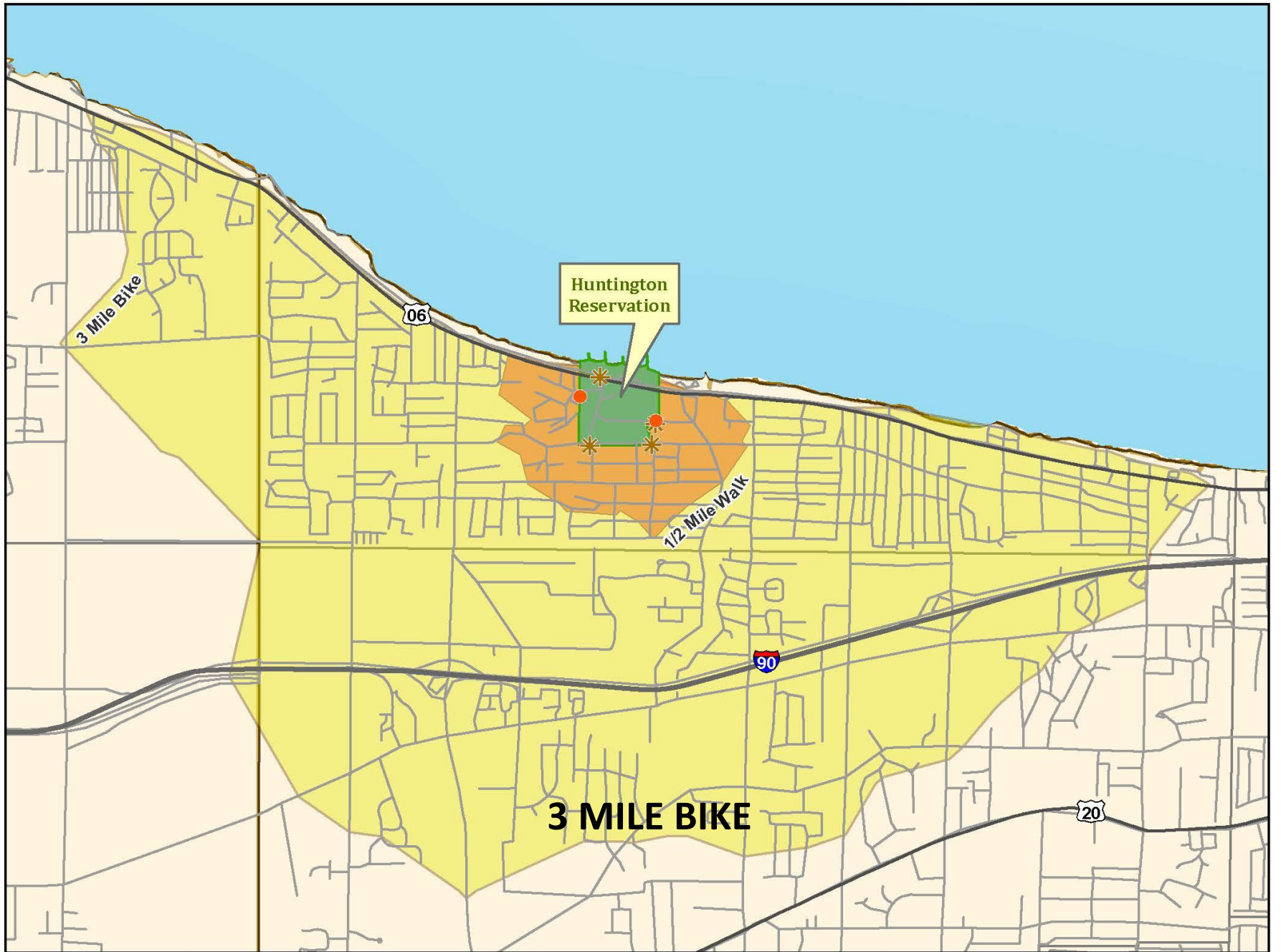
Huntington  
Reservation

06

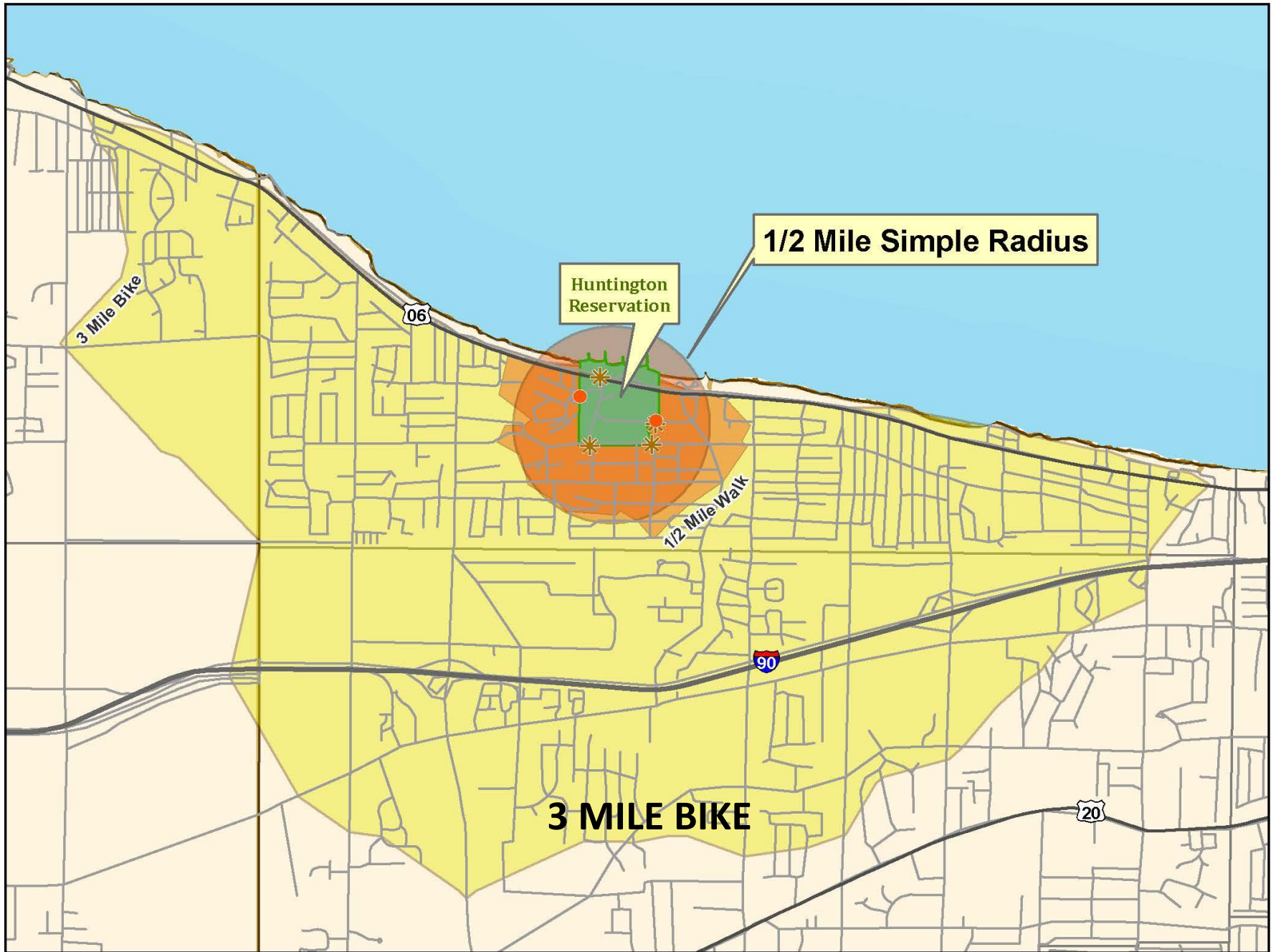
1/2 Mile Walk

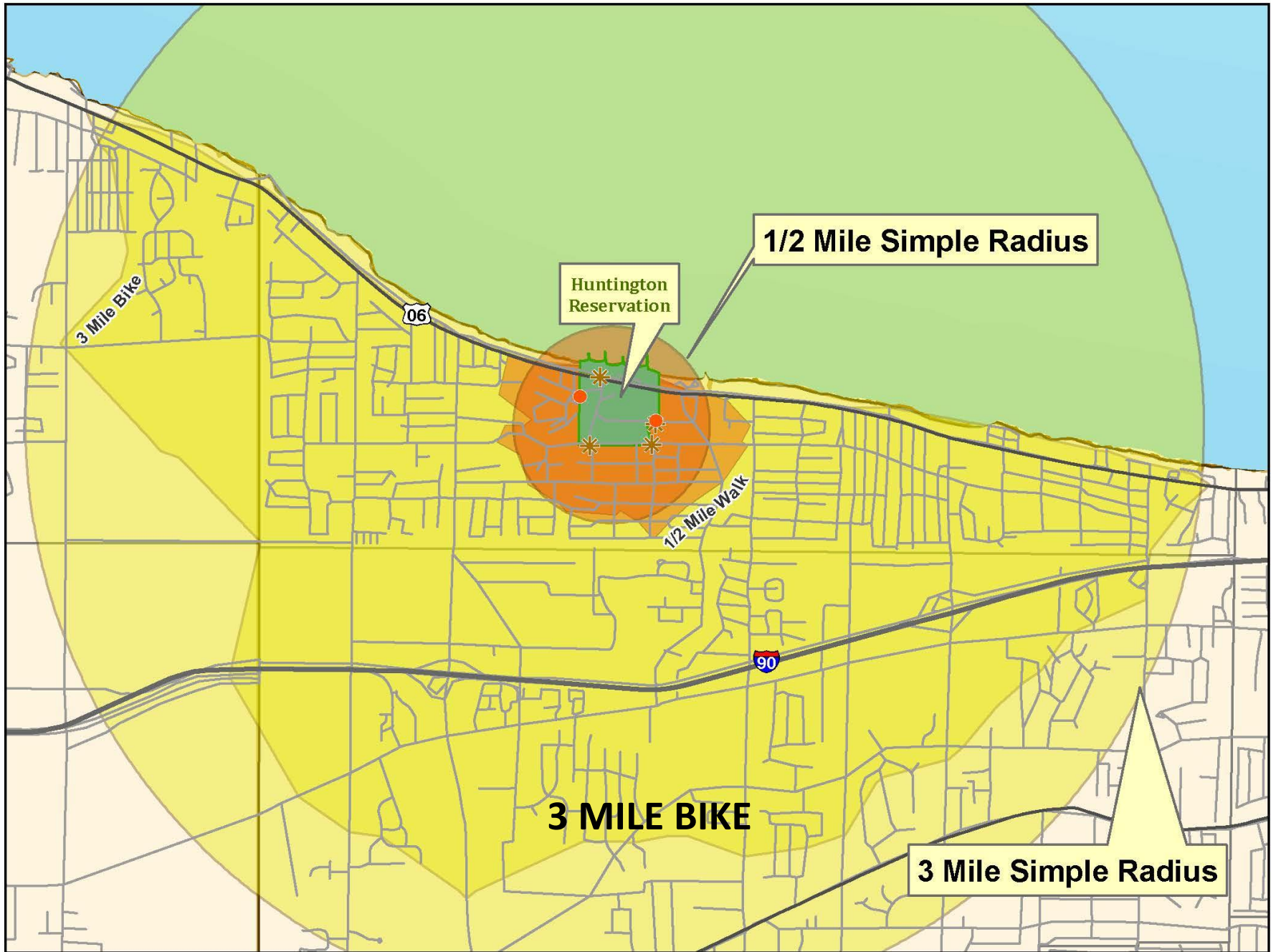
90

20









**1/2 Mile Simple Radius**

Huntington  
Reservation

3 Mile Bike

06

1/2 Mile Walk

90

**3 MILE BIKE**

**3 Mile Simple Radius**





# Huntington Reservation Walk/Bike Shed

Lake Erie

Avon Lake

3 Mile Bike

1.0% of households do not have access to a vehicle

8.1% of workers work from home

28.0% of households have children under 18 present

Bav. Village

Krebs Rd

Bradley Rd

Clemens Rd

90 Detroit Rd

Hilliard Blvd

Westlake

Center Ridge Rd

Columbia Rd

### Entrance Point Type

- Walk Only
- Bike and Walk
- Reservations
- 1/2 Mile Walk
- 3 Mile Bike
- Interstate Routes
- US Routes
- Roads
- Hydrology
- Cities, Villages, and Townships
- Counties



0 0.1250.25 0.5 0.75 1 Miles

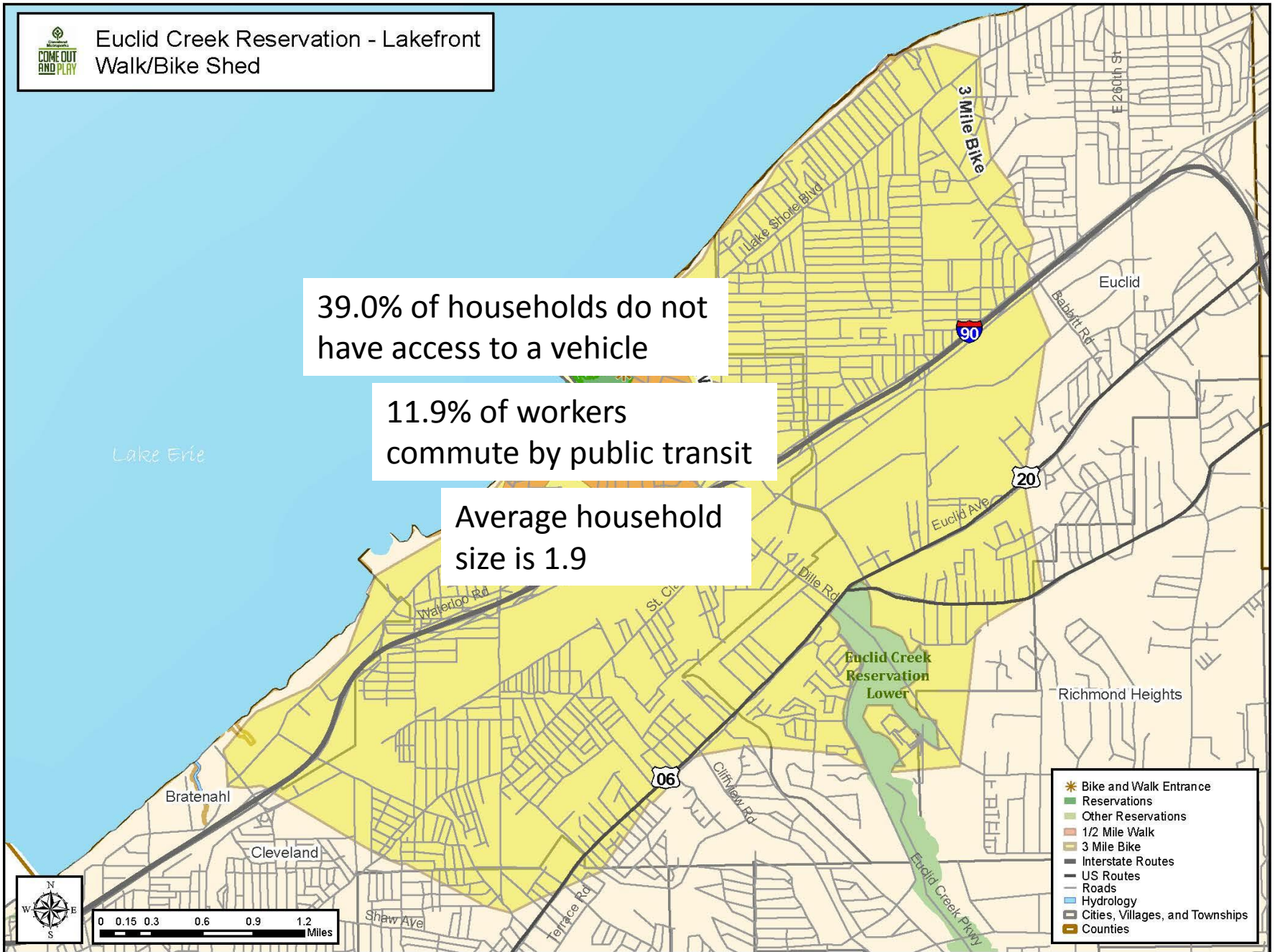


# Euclid Creek Reservation - Lakefront Walk/Bike Shed

39.0% of households do not have access to a vehicle

11.9% of workers commute by public transit

Average household size is 1.9



- \* Bike and Walk Entrance
- Reservations
- Other Reservations
- 1/2 Mile Walk
- 3 Mile Bike
- Interstate Routes
- US Routes
- Roads
- Hydrology
- Cities, Villages, and Townships
- Counties



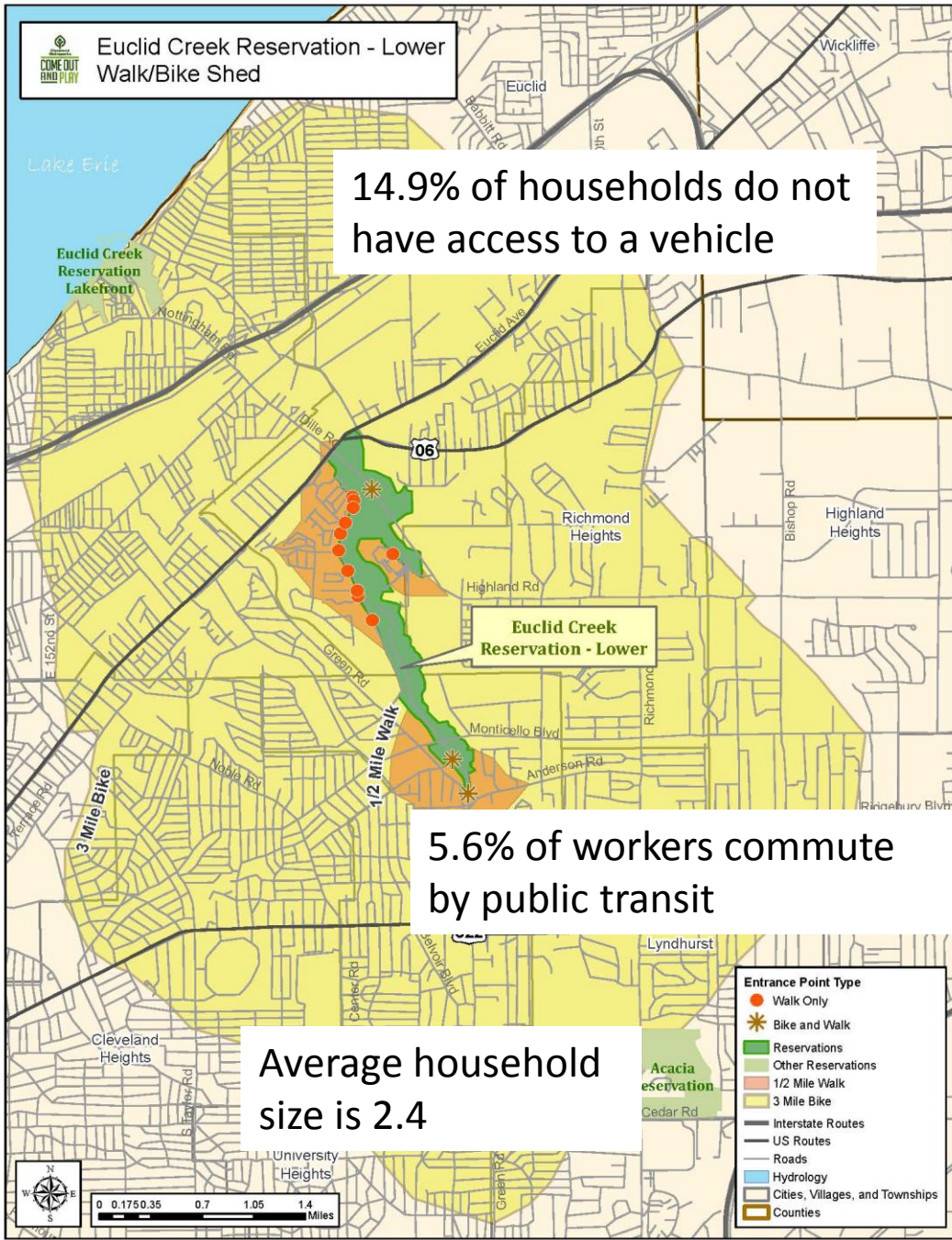


Euclid Creek Reservation - Lower  
Walk/Bike Shed

14.9% of households do not have access to a vehicle

5.6% of workers commute by public transit

Average household size is 2.4



**Entrance Point Type**

- Walk Only
- ✱ Bike and Walk

**Reservations**

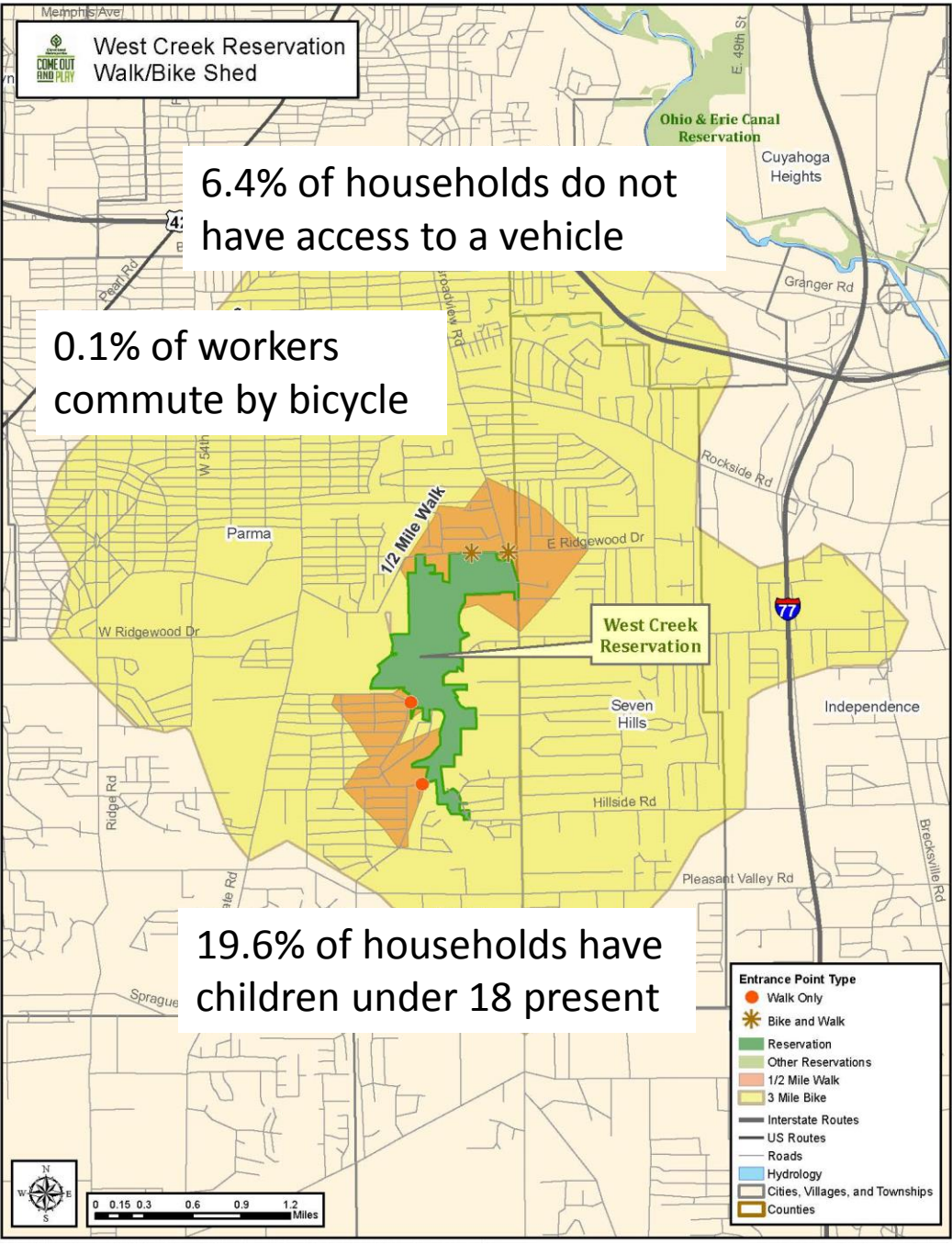
- Reservations
- Other Reservations
- 1/2 Mile Walk
- 3 Mile Bike

**Transportation**

- Interstate Routes
- US Routes
- Roads
- Hydrology
- Cities, Villages, and Townships
- Counties



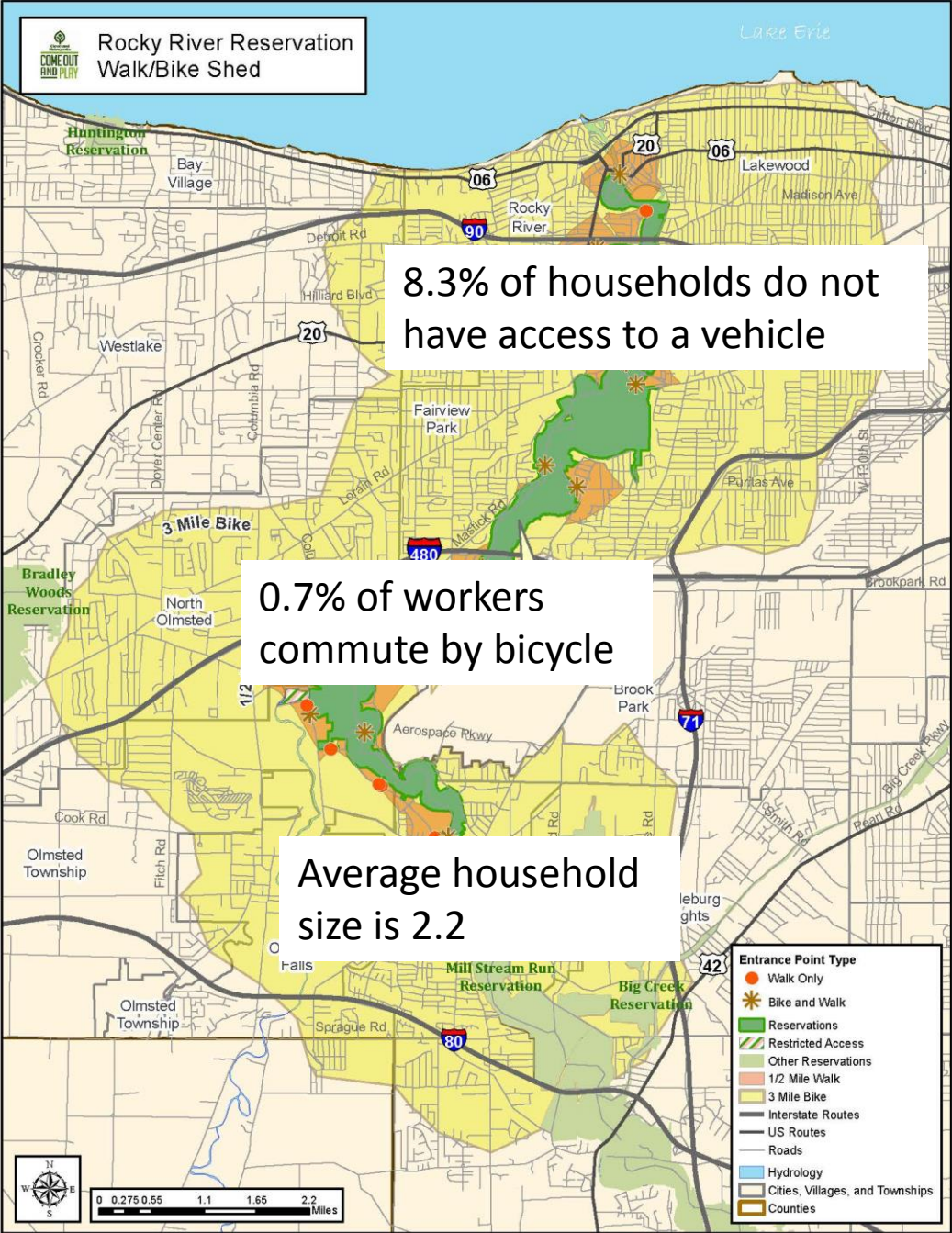
0 0.175 0.35 0.7 1.05 1.4 Miles







# Rocky River Reservation Walk/Bike Shed



8.3% of households do not have access to a vehicle

0.7% of workers commute by bicycle

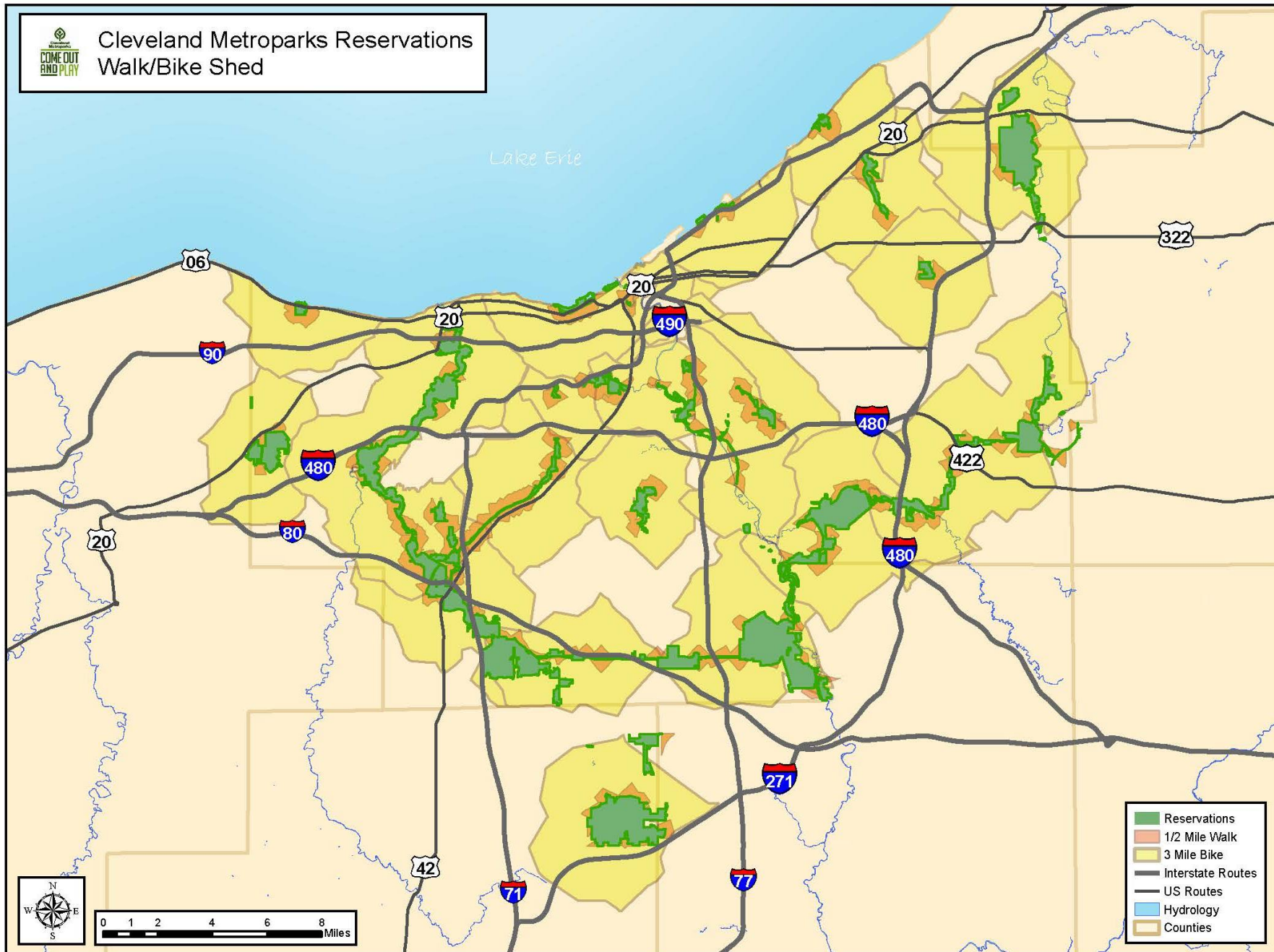
Average household size is 2.2

- Entrance Point Type**
- Walk Only
  - ✱ Bike and Walk
- Reservations**
- ▨ Restricted Access
  - ▨ Other Reservations
  - ▨ 1/2 Mile Walk
  - ▨ 3 Mile Bike
- Interstate Routes**
- US Routes
  - Roads
- Hydrology**
- ▨ Cities, Villages, and Townships
  - ▨ Counties



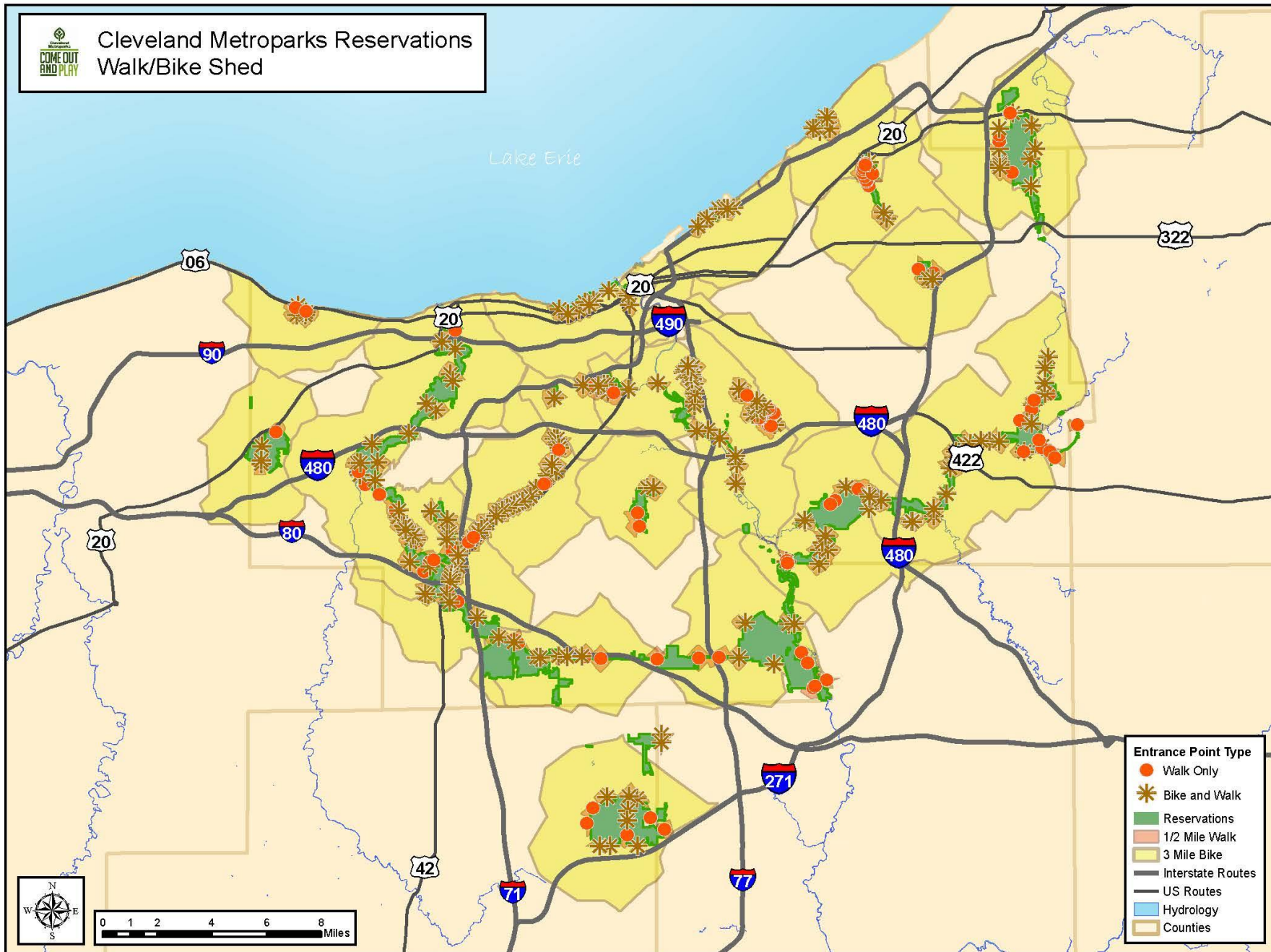


# Cleveland Metroparks Reservations Walk/Bike Shed





# Cleveland Metroparks Reservations Walk/Bike Shed





Cleveland  
Metroparks

COME OUT  
AND PLAY



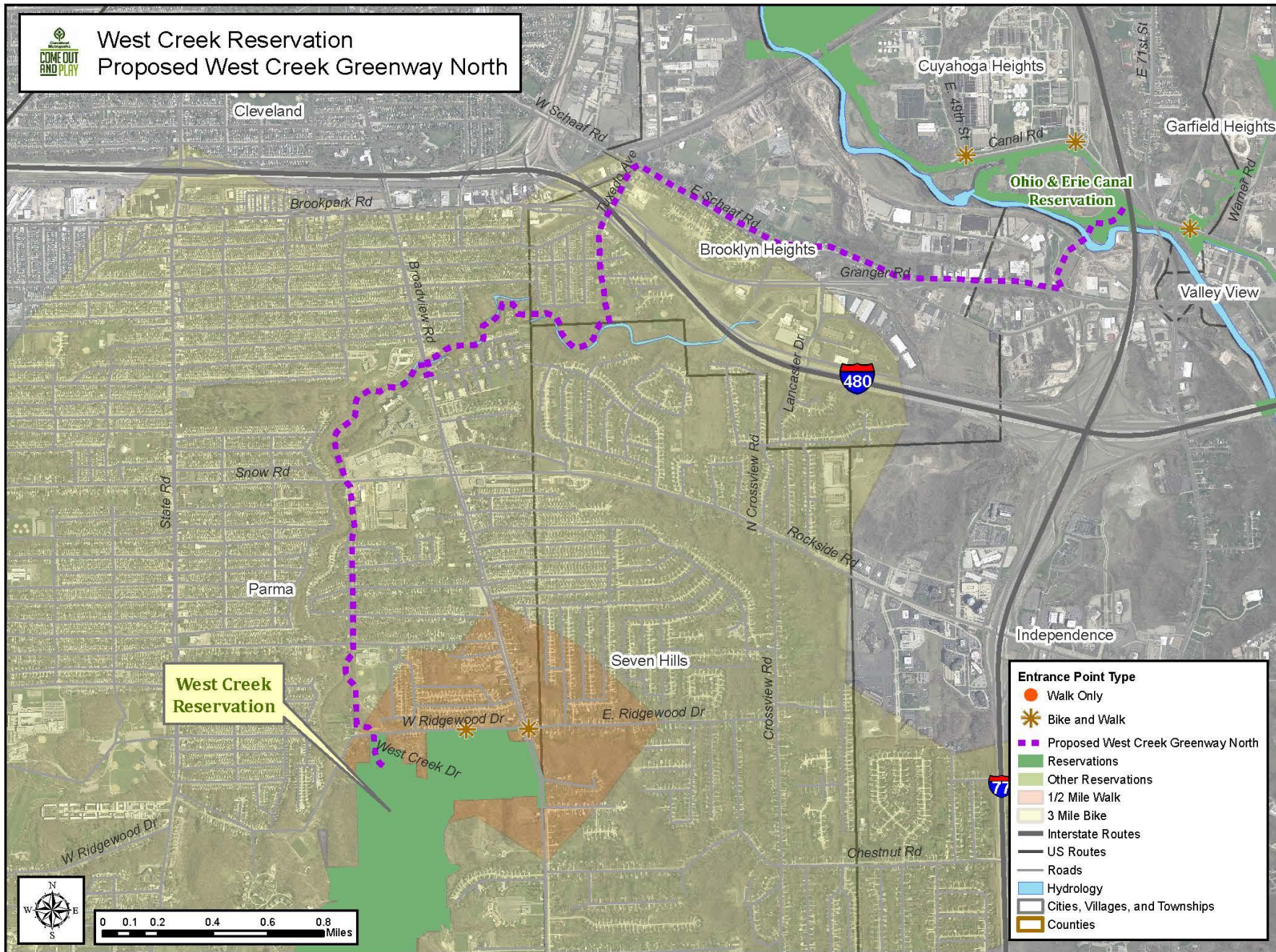
# Relation to Other Trail Projects

- New projects can be added to the model
  - Other parks could also be added
- Eastside Greenway process

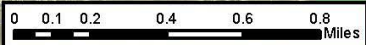




# West Creek Reservation Proposed West Creek Greenway North



- Entrance Point Type**
- Walk Only
  - ✱ Bike and Walk
  - - - Proposed West Creek Greenway North
  - Reservations
  - Other Reservations
  - 1/2 Mile Walk
  - 3 Mile Bike
  - Interstate Routes
  - US Routes
  - Roads
  - Hydrology
  - Cities, Villages, and Townships
  - Counties







Cleveland  
Metroparks

COME OUT  
AND PLAY



# Next Steps

- Model new regional and neighborhood connections
- Look at transit access to reservations
- Continue to improve analysis



Cleveland  
Metroparks

COME OUT  
AND PLAY



# Questions?



Sara Byrnes Maier

Senior Strategic Park Planner

216.635.3289 or [sbm@clevelandmetroparks.com](mailto:sbm@clevelandmetroparks.com)