




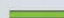



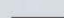

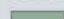



**Cleveland
Metroparks**

**100
YEARS**

Re-Connecting Cleveland: TIGER Project Update
Cleveland Metroparks Board of Park Commissioners - December 14, 2017

Cleveland Metroparks
TIGER TRAILS
 DECEMBER 2017 UPDATE

-  TIGER Grant Funded Trails
-  Towpath Trail - Complete
-  Towpath Trail - Funded
-  Complete Trail
-  Funded Trail
-  Proposed Trail
-  Cleveland Metroparks Trails
-  Other Adjacent Trails
-  Adjacent Bike Route
-  Cleveland Metroparks
-  Other Parks & Protected Areas



LAKE ERIE

DOWNTOWN

WAREHOUSE DISTRICT

FLATS EASTBANK

FLATS WESTBANK

CANAL BASIN PARK

RIVERGATE

WESTSIDE MARKET

OHIO CITY

TREMONT

COAST GUARD STATION

WATER TAXI

WATER TAXI

WATER TAXI

W 25th St

W 25th St

W 25th St

W 25th St

W 25th St

W 25th St

W 25th St

W 25th St

W 25th St

W 25th St

W 25th St

W 25th St

W 25th St

W 25th St

W 25th St

W 25th St

W 25th St

W 25th St

W 25th St

W 25th St

W 25th St

W 25th St

W 25th St

EDGEWATER PARK

EDGEWATER BEACHHOUSE

BATTERY PARK

GORDON SQUARE

W 65th St

W 65th St

W 65th St

W 65th St

W 65th St

W 65th St

Detroit Ave

Franklin Blvd

Lorain Ave

Fulton Rd

Abbey Ave

Scanton Rd

W 14th St

- In July 2016, Cleveland Metroparks was awarded \$7.950 million from Transportation Investment Generating Economic Recovery (TIGER) grant program through the USDOT
- Application submitted in partnership with The Trust for Public Land and LAND studio

Cleveland Metroparks
TIGER TRAILS
 DECEMBER 2017 UPDATE

- Summary of Project Components
- Work to Date
- Timeline for Anticipated Construction
- Upcoming Work

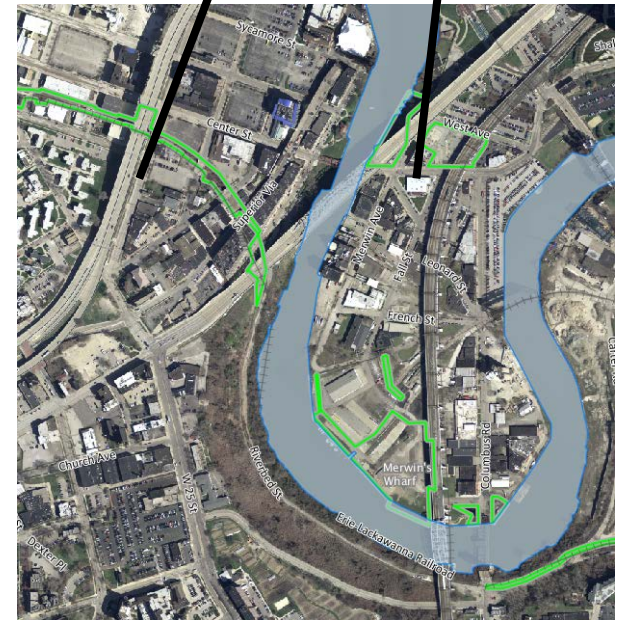
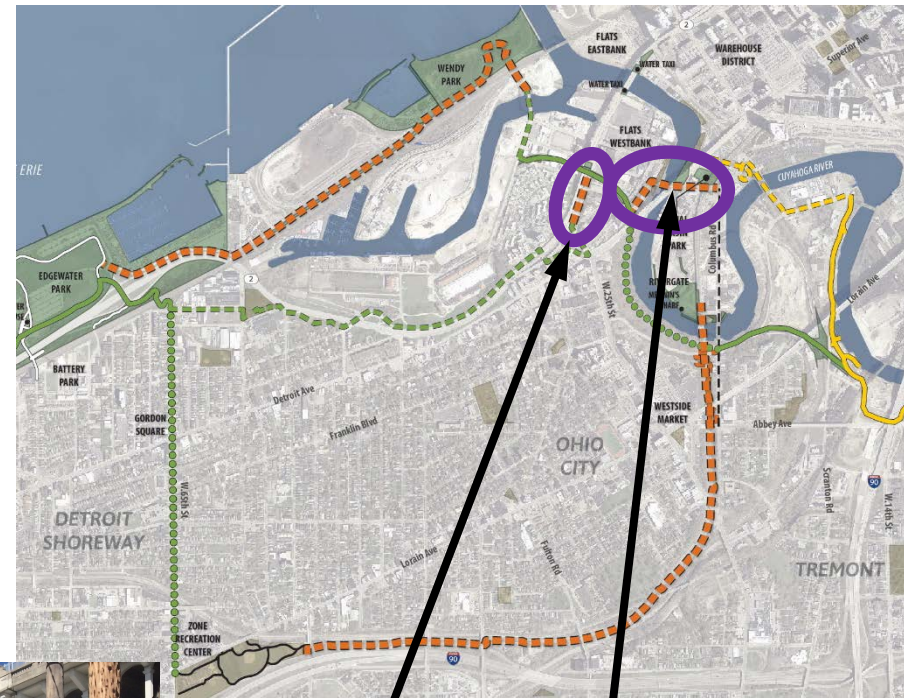


Cleveland Lakefront Bikeway Connector & Canal Basin Park Connector

Design: Michael Baker International

Status: Design nearing completion

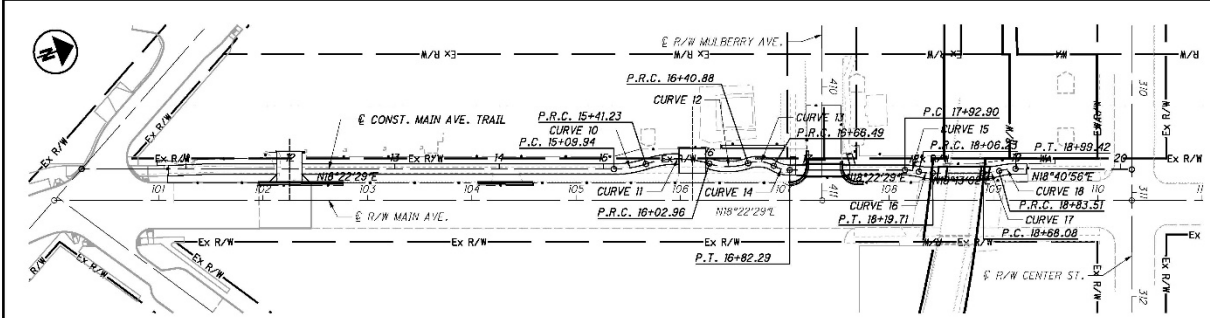
Anticipated Construction: Spring 2018-
Summer 2018



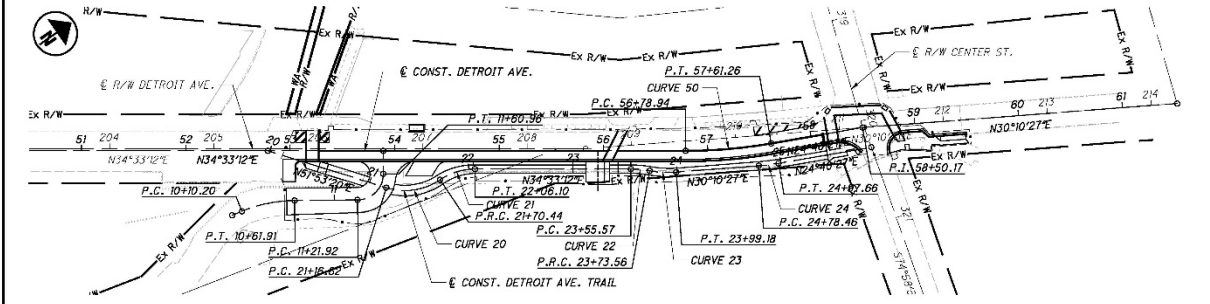
MAJ SHAJ
LATITI

PORTI
INTER:
FEDER
STATE
COUNT
OTHER

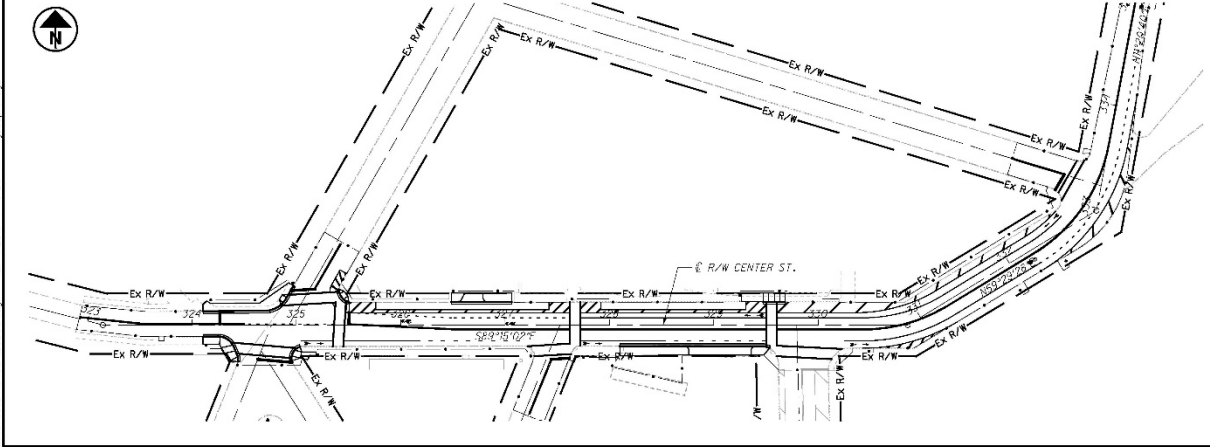
Sheet\304804_GEO01.dwg 12/17/2017 7:46:20 PM jacobhoyer
\\S:\proj\304804\304804_304804.dwg 12/17/2017 7:46:16 PM 0x00000000



CURVE 1 P.I. STA. 15+25.71 $\Delta = 17^{\circ}55'24''$ $Dc = 57^{\circ}17'45''$ $R = 100.00'$ $T = 15.77'$ $L = 31.28'$ $E = 1.24'$	CURVE 2 P.I. STA. 15+73.11 $\Delta = 35^{\circ}22'18''$ $Dc = 57^{\circ}17'45''$ $R = 100.00'$ $T = 31.83'$ $L = 61.74'$ $E = 4.36'$	CURVE 3 P.I. STA. 16+22.58 $\Delta = 36^{\circ}12'21''$ $Dc = 95^{\circ}29'35''$ $R = 60.00'$ $T = 19.81'$ $L = 37.91'$ $E = 3.12'$
CURVE 4 P.I. STA. 16+54.52 $\Delta = 48^{\circ}55'24''$ $Dc = 190^{\circ}59'09''$ $R = 30.00'$ $T = 13.65'$ $L = 25.62'$ $E = 2.96'$	CURVE 5 P.I. STA. 16+74.58 $\Delta = 30^{\circ}09'54''$ $Dc = 190^{\circ}59'09''$ $R = 30.00'$ $T = 8.06'$ $L = 15.79'$ $E = 1.07'$	CURVE 6 P.I. STA. 17+39.59 $\Delta = 12^{\circ}43'20''$ $Dc = 95^{\circ}29'35''$ $R = 60.00'$ $T = 0.69'$ $L = 13.32'$ $E = 0.37'$
CURVE 7 P.I. STA. 18+13.00 $\Delta = 12^{\circ}43'20''$ $Dc = 95^{\circ}29'35''$ $R = 60.00'$ $T = 6.77'$ $L = 13.49'$ $E = 0.38'$	CURVE 8 P.I. STA. 18+75.85 $\Delta = 14^{\circ}43'33''$ $Dc = 85^{\circ}29'35''$ $R = 60.00'$ $T = 7.75'$ $L = 15.42'$ $E = 0.50'$	CURVE 9 P.I. STA. 18+91.51 $\Delta = 15^{\circ}11'38''$ $Dc = 95^{\circ}29'35''$ $R = 60.00'$ $T = 8.00'$ $L = 15.91'$ $E = 0.53'$



CURVE 20 P.I. STA. 21+45.49 $\Delta = 81^{\circ}23'19''$ $Dc = 95^{\circ}29'35''$ $R = 60.00'$ $T = 28.87'$ $L = 53.81'$ $E = 6.58'$	CURVE 21 P.I. STA. 21+88.81 $\Delta = 34^{\circ}03'11''$ $Dc = 85^{\circ}29'35''$ $R = 60.00'$ $T = 19.37'$ $L = 35.66'$ $E = 2.75'$	CURVE 22 P.I. STA. 23+64.59 $\Delta = 10^{\circ}18'10''$ $Dc = 57^{\circ}17'45''$ $R = 100.00'$ $T = 3.02'$ $L = 17.98'$ $E = 0.41'$
CURVE 23 P.I. STA. 23+86.44 $\Delta = 14^{\circ}40'55''$ $Dc = 57^{\circ}17'45''$ $R = 100.00'$ $T = 12.88'$ $L = 25.62'$ $E = 0.83'$	CURVE 24 P.I. STA. 24+88.07 $\Delta = 13^{\circ}00'00''$ $Dc = 28^{\circ}13'52''$ $R = 200.00'$ $T = 9.61'$ $L = 19.20'$ $E = 0.23'$	CURVE 50 P.I. STA. 57+20.20 $\Delta = 91^{\circ}52'45''$ $Dc = 12^{\circ}00'00''$ $R = 477.46'$ $T = 41.27'$ $L = 82.33'$ $E = 1.78'$



CURVE 25 P.I. STA. 25+10.00 $\Delta = 12^{\circ}43'20''$ $Dc = 95^{\circ}29'35''$ $R = 60.00'$ $T = 6.77'$ $L = 13.49'$ $E = 0.38'$	CURVE 26 P.I. STA. 25+54.52 $\Delta = 48^{\circ}55'24''$ $Dc = 190^{\circ}59'09''$ $R = 30.00'$ $T = 13.65'$ $L = 25.62'$ $E = 2.96'$	CURVE 27 P.I. STA. 26+09.54 $\Delta = 30^{\circ}09'54''$ $Dc = 190^{\circ}59'09''$ $R = 30.00'$ $T = 8.06'$ $L = 15.79'$ $E = 1.07'$
CURVE 28 P.I. STA. 26+54.52 $\Delta = 35^{\circ}22'18''$ $Dc = 57^{\circ}17'45''$ $R = 100.00'$ $T = 31.83'$ $L = 61.74'$ $E = 4.36'$	CURVE 29 P.I. STA. 27+09.42 $\Delta = 17^{\circ}55'24''$ $Dc = 17^{\circ}55'24''$ $R = 100.00'$ $T = 15.77'$ $L = 31.28'$ $E = 1.24'$	CURVE 50 P.I. STA. 57+20.20 $\Delta = 91^{\circ}52'45''$ $Dc = 12^{\circ}00'00''$ $R = 477.46'$ $T = 41.27'$ $L = 82.33'$ $E = 1.78'$

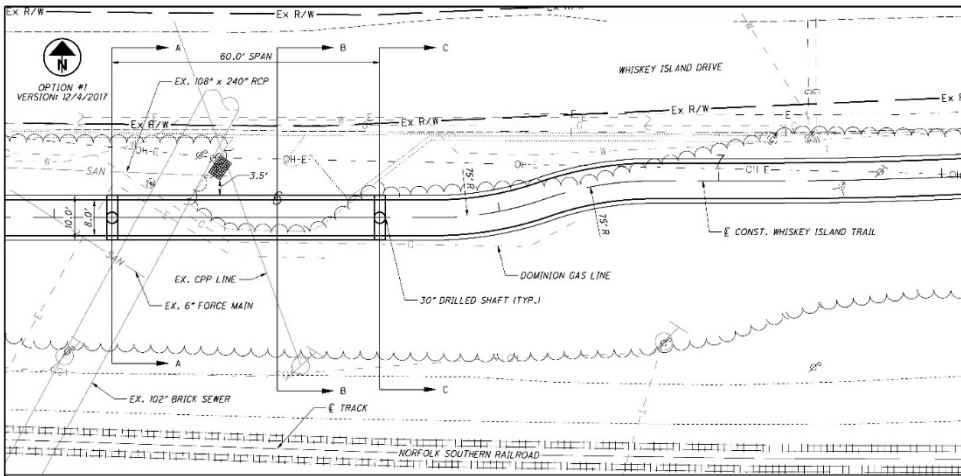
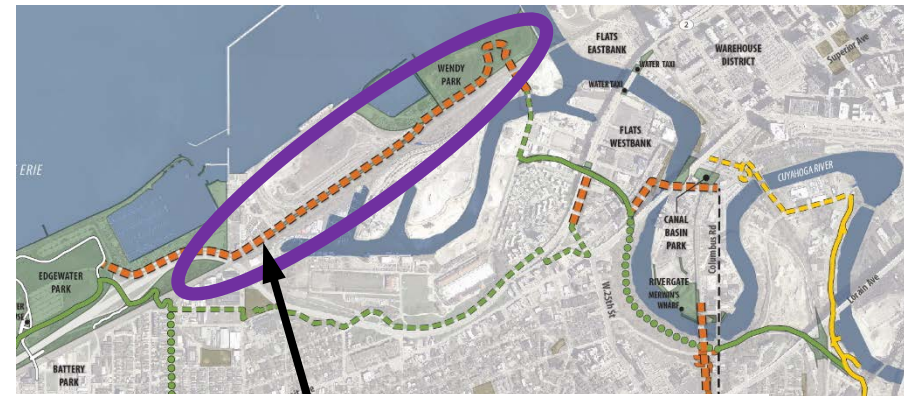
HORIZONTAL SCALE: 1"=100'
 VERTICAL SCALE: 1"=10'
 SCHEMATIC PLAN
 LAKEFRONT BIKEWAY/CANAL BASIN PARK CONNECTORS
 2/17

Whiskey Island Connector

Design: E.L. Robinson Engineering

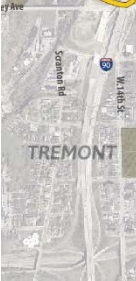
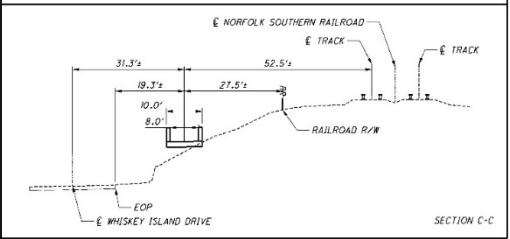
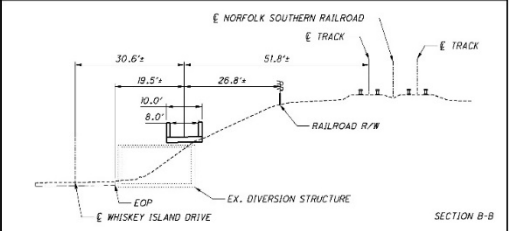
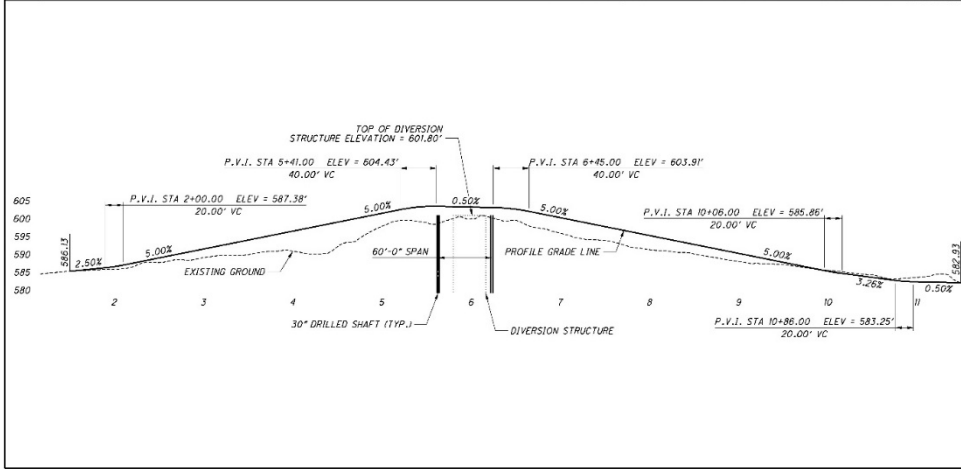
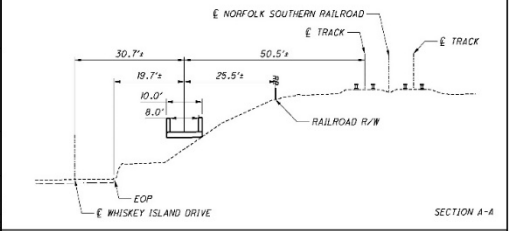
Status: Nearing 30% design

Anticipated Construction: Summer 2018-
Summer 2019



NOTES:

- EDGE OF STRUCTURE SHALL BE PLACED 3.5' SOUTH OF THE EDGE OF THE DIVERSION STRUCTURE GATE.
- RETAINING WALL SHALL BE PLACED ALONG THE SOUTH SIDE OF THE TRAIL FROM STATION 9+00 TO STATION 11+50.





WEST TRAIL SECTION



CENTRAL TRAIL SECTION



EAST TRAIL SECTION

WHISKEY ISLAND TRAIL CONNECTOR
TRAIL ALIGNMENT ENLARGEMENT
NOVEMBER 2015

Cleveland Metroparks

EL. ROBINSON ENGINEERING

Red Line Greenway

Design: Michael Baker International

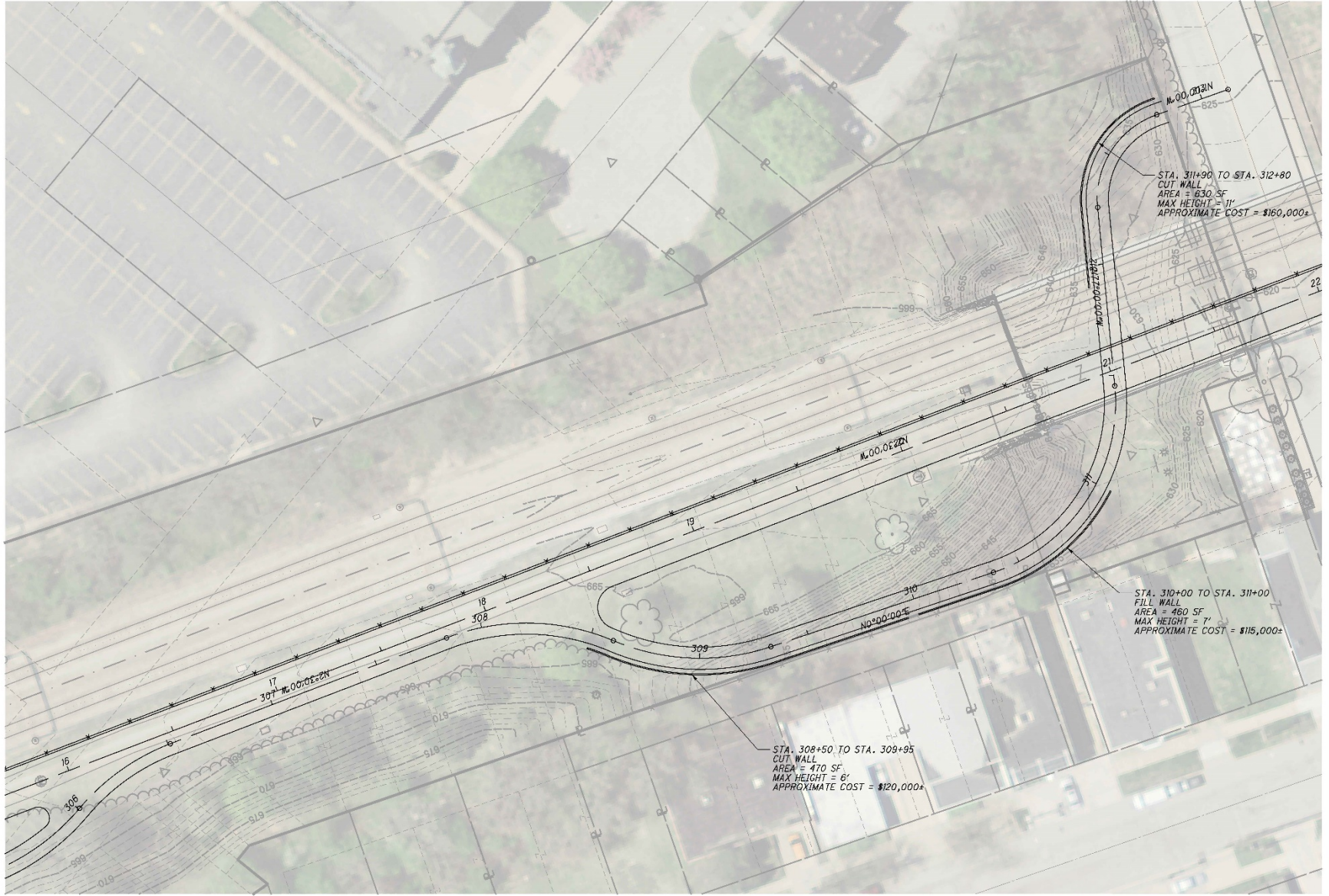
Status: Nearing 30% design

Anticipated Construction: Spring 2019-
Winter 2020



1 OVERLOOK





RED LINE GREENWAY

PLAN
FRANKLIN AVE. CONNECTOR - 8.33% PROFILE

SCALE IN FEET
HORIZONTAL
1" = 20'



Wendy Park Bridge

Design: KS Associates

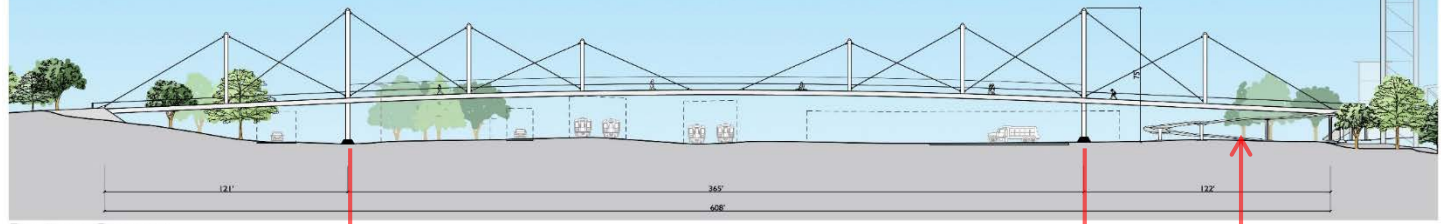
Status: 50% design; revisions

Anticipated Construction: Summer 2018-
Winter 2019



Estimated Cost \$8M - \$10M

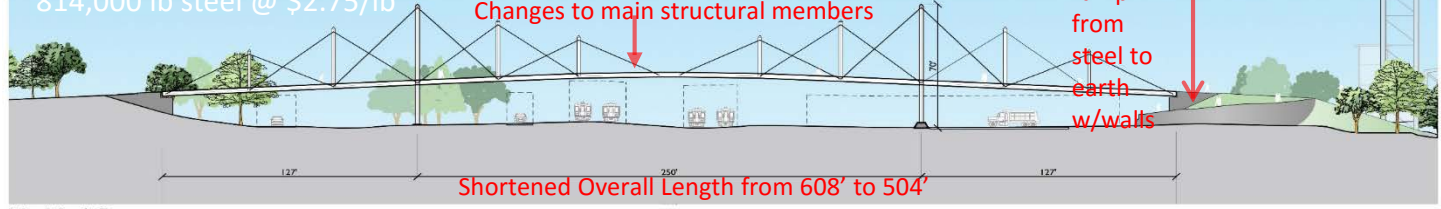
1,318,000 lb steel @ \$4/lb



Previous Concept

Estimated Cost \$6M

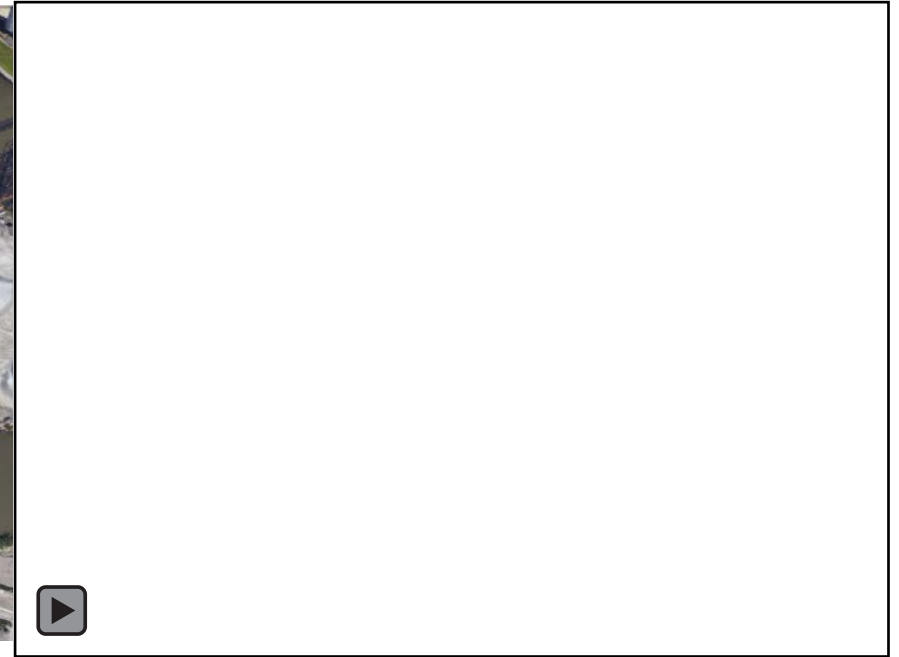
814,000 lb steel @ \$2.75/lb



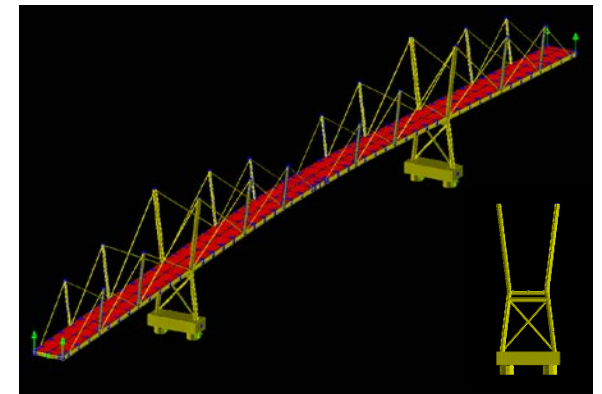
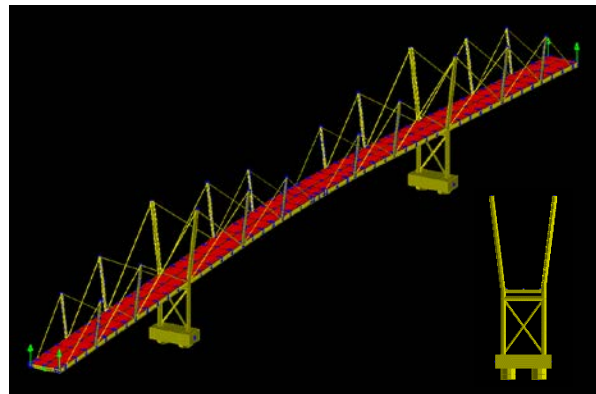
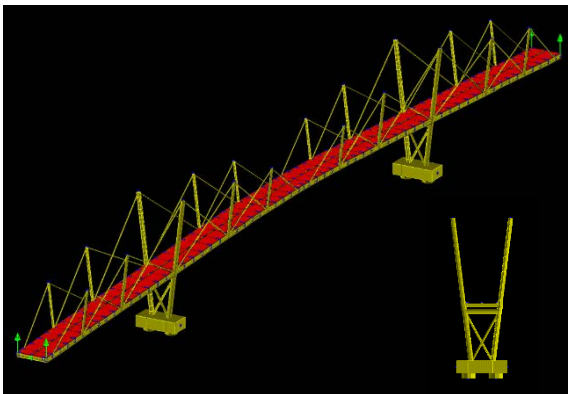
Modified Concept



Railroad Coordination



Bridge Pier Design Analysis



Wind Loading and Vibration

DRAFT REPORT



WIND ENGINEERING SERVICES
 WENDY PARK BRIDGE
 RWDI #1800009
 November 13, 2017



TABLE OF CONTENTS

EXECUTIVE SUMMARY

1	INTRODUCTION	1
1.1	Project Description	1
1.2	Objectives	1
2	WIND CLIMATE ANALYSIS	2
2.1	Climate Data and Site Assessment	2
2.2	Wind Climate Analysis	2
2.2.1	Regional Wind Climate	2
2.2.2	Wind Speeds at the Bridge Site	3
2.2.3	Turbulence Properties at the Bridge Site	3
3	AERODYNAMIC STABILITY	5
3.1	Bridge Properties	5
3.2	Review of Aerodynamic Instabilities	6
3.2.1	Flutter	6
3.2.2	Galloping	7
3.2.3	Vortex-Induced Oscillations	7
4	CONCLUSIONS AND RECOMMENDATIONS	9
5	REFERENCES	10

WENDY PARK BRIDGE

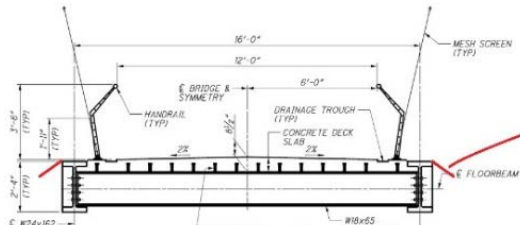
CITY OF CLEVELAND, OHIO
 WIND ENGINEERING SERVICES
 RWDI #1800009
 November 13, 2017

SUBMITTED TO
 Michael J. Malloy, P.E.
 Director of Transportation Services
 RC Associates
 270 Buxton Road, Suite 100
 Erie, PA 16505
 T: 480.860.4723 ext. 397
 W: www.rcw.com
 malloy@rc-associates.com

SUBMITTED BY
 Brian Dean
 Senior Project Manager / Associate
 RC Associates
 Steven Stoyanoff, Ph.D., P.Eng., Ing.
 Project Director / P.Eng.
 Steven Stoyanoff, P.Eng.
 Rensselaer Williams Davies & Irwin Inc.
 650 Sandusky Drive
 Guelph, Canada, N1G 4P6
 T: 519.863.8111
 F: 519.875.1616



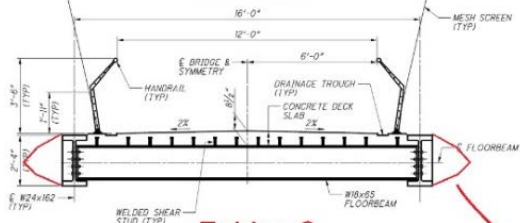
RWDI Wind Tunnel



Fairing 1



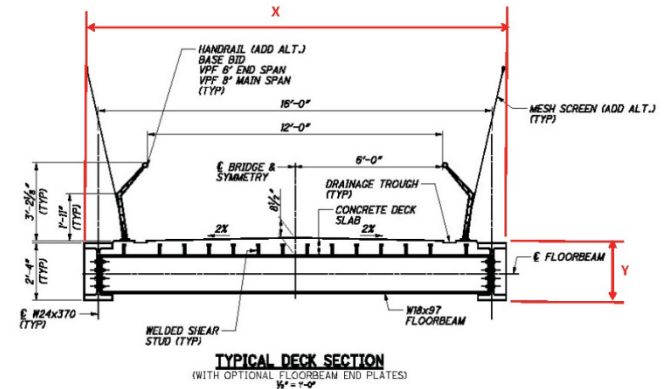
Hunt Club Bridge Fairing



Fairing 2



Goethals Bridge Fairing



TYPICAL DECK SECTION
 (WITH OPTIONAL FLOORBEAM END PLATES)

Slenderness Ratio = X/Y
 Currently = 6 or 7
 Desired = 10

Fairing Analysis

Slenderness Ratio Analysis