

WEST CREEK RESERVATION

PARK PLAN

SEPT 2025

OVERALL

- Continue to partner with West Creek Conservancy and others to expand land protection and regional connections
- Work with Trails Development Manager to assess routes and improve sustainability of trail system. Pursue neighborhood connections and remove unsanctioned trails
- Evaluate potential trail routes and types

WEST CREEK CORRIDOR PLAN

- Support West Creek Conservancy and other partners in effort to link West Creek Reservation to the Cuyahoga River and Towpath Trail

MANAGEMENT CENTER

KEYSTONE PICNIC AREA AND RESERVABLE SHELTER

WATERSHED STEWARDSHIP CENTER

- Investigate alternatives for bicycle connectivity along West Ridgewood – roadway width cannot accommodate cyclists
- Continue school and community programming and outreach. Complete upgrades to interpretive displays
- Work with partners to advance phased implementation of West Creek Greenway connections

MONARCH PICNIC AREA

- Partner for trail connection to the north and eventual link to Cuyahoga River
- Conserve buffer to west if possible

VALLEY LODGE

- Evaluate renovation needs and potential uses
- Improve parking layout and site circulation

LOOKOUT RIDGE TRAIL AND WEST RIDGEWOOD WETLAND

- Work with Parma to improve pedestrian access from surrounding neighborhoods

BLUEBIRD POINT

- Promote other trailheads to reduce congestion at peak times
- Continue monitoring landfill cap and vegetation plus antenna structures

SKINNERS RUN TRAIL

- Add neighborhood connections and wayfinding
- Pursue stream restoration opportunities and mitigate erosion at bridges
- Designate route(s) and utilize boardwalks to avoid wetland impacts
- Explore potential connections to the south

HIGH POINT PARK

- See Area Plan - Improve access road and align with W. Ridgewood at traffic light(W. 29th). Convert loop drive to one way outside lane and trail on inside lane.
- As trail system is completed, promote programs and use as a trailhead. Install restroom, kiosk, and small shelter.

CENTER PARK AND GREENBRIAR TRAIL

- Make trailhead more prominent. Add crosswalk(s) to connect to sidewalks
- Add CXT and small cookhouse-type shelter or tent
- City of Parma has issues along Parkview Drive / settlement and erosion at former Crile landfill

DENTZLER ROAD TRAILHEAD

- Evaluate long term potential to improve trail accessibility and incorporate drainage improvements
- Explore potential connections to the south

TURKEY TURNS AREA (FORMER MUELLER PROPERTY)

- See Area Plan - Add trail connection and group use by permit
- Study feasibility of trail connections to the north

COVENTRY TO BROADVIEW TRAIL

- Construct 2025-2026

— All Purpose Trail

- - - Other Trails

••• Proposed Trails

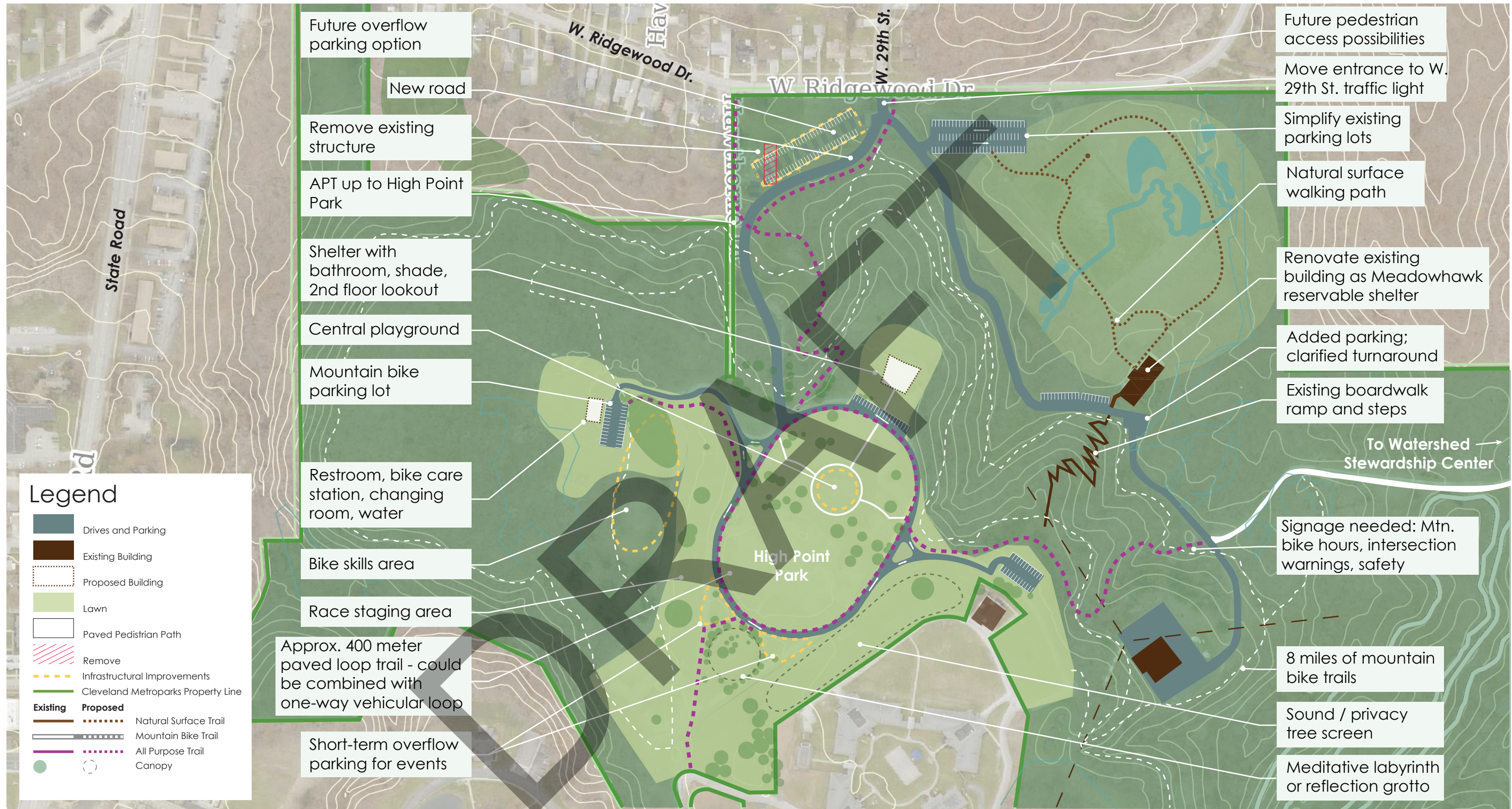
■ Land Protection

Water

Wetlands

Other Parks

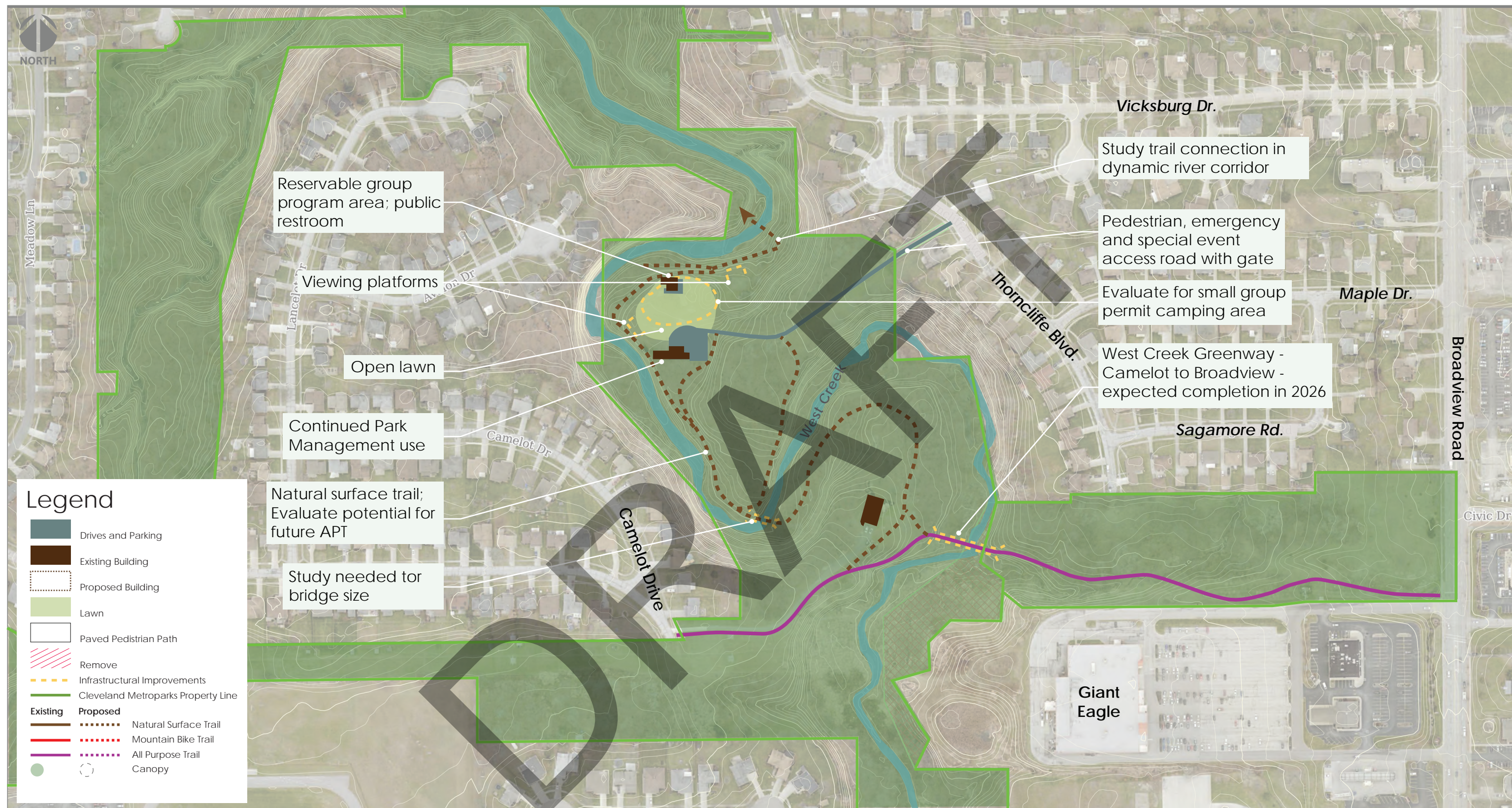
West Creek Reservation: 572 acres



High Point Park Concept

September 2025





Turkey Turns Picnic Area Concept

September 2025

