

- OVERALL**
- Continue to partner with West Creek Conservancy and others to expand land protection and regional connections
 - Work with Trails Development Manager to assess routes and improve sustainability of trail system. Pursue neighborhood connections and remove unsanctioned trails
 - Evaluate potential trail routes and types

- WEST CREEK CORRIDOR PLAN**
- Support West Creek Conservancy and other partners in effort to link West Creek Reservation to the Cuyahoga River and Towpath Trail

MANAGEMENT CENTER

KEYSTONE PICNIC AREA AND RESERVABLE SHELTER

- WATERSHED STEWARDSHIP CENTER**
- Investigate alternatives for bicycle connectivity along West Ridgewood – roadway width cannot accommodate cyclists
 - Continue school and community programming and outreach. Complete upgrades to interpretive displays
 - Work with partners to advance phased implementation of West Creek Greenway connections

- MONARCH PICNIC AREA**
- Partner for trail connection to the north and eventual link to Cuyahoga River
 - Conserve buffer to west if possible

- MEADOWHAWK LODGE**
- Evaluate renovation needs and potential uses
 - Improve parking layout and site circulation

- LOOKOUT RIDGE TRAIL AND WEST RIDGEWOOD WETLAND**
- Work with Parma to improve pedestrian access from surrounding neighborhoods

- BLUEBIRD POINT**
- Promote other trailheads to reduce congestion at peak times
 - Continue monitoring landfill cap and vegetation plus antenna structures

- HIGH POINT PARK**
- See Area Plan - Improve access road and align with W. Ridgewood at traffic light(W. 29th). Convert loop drive to one way outside lane and trail on inside lane.
 - As trail system is completed, promote programs and use as a trailhead. Install restroom, kiosk, and small shelter.

- CENTER PARK AND GREENBRIAR TRAIL**
- Make trailhead more prominent. Add crosswalk(s) to connect to sidewalks
 - Add CXT and small cookhouse-type shelter or tent
 - City of Parma has issues along Parkview Drive / settlement and erosion at former Crile landfill

- SKINNERS RUN TRAIL**
- Add neighborhood connections and wayfinding
 - Pursue stream restoration opportunities and mitigate erosion at bridges
 - Designate route(s) and utilize boardwalks to avoid wetland impacts
 - Explore potential connections to the south

- DENTZLER ROAD TRAILHEAD**
- Evaluate long term potential to improve trail accessibility and incorporate drainage improvements
 - Explore potential connections to the south

- TURKEY TURNS AREA (FORMER MUELLER PROPERTY)**
- See Area Plan - Add trail connection and group use by permit
 - Study feasibility of trail connections to the north

- COVENTRY TO BROADVIEW TRAIL**
- Construct 2025-2026

All Purpose Trail

Other Trails

Proposed Trails

Land Protection

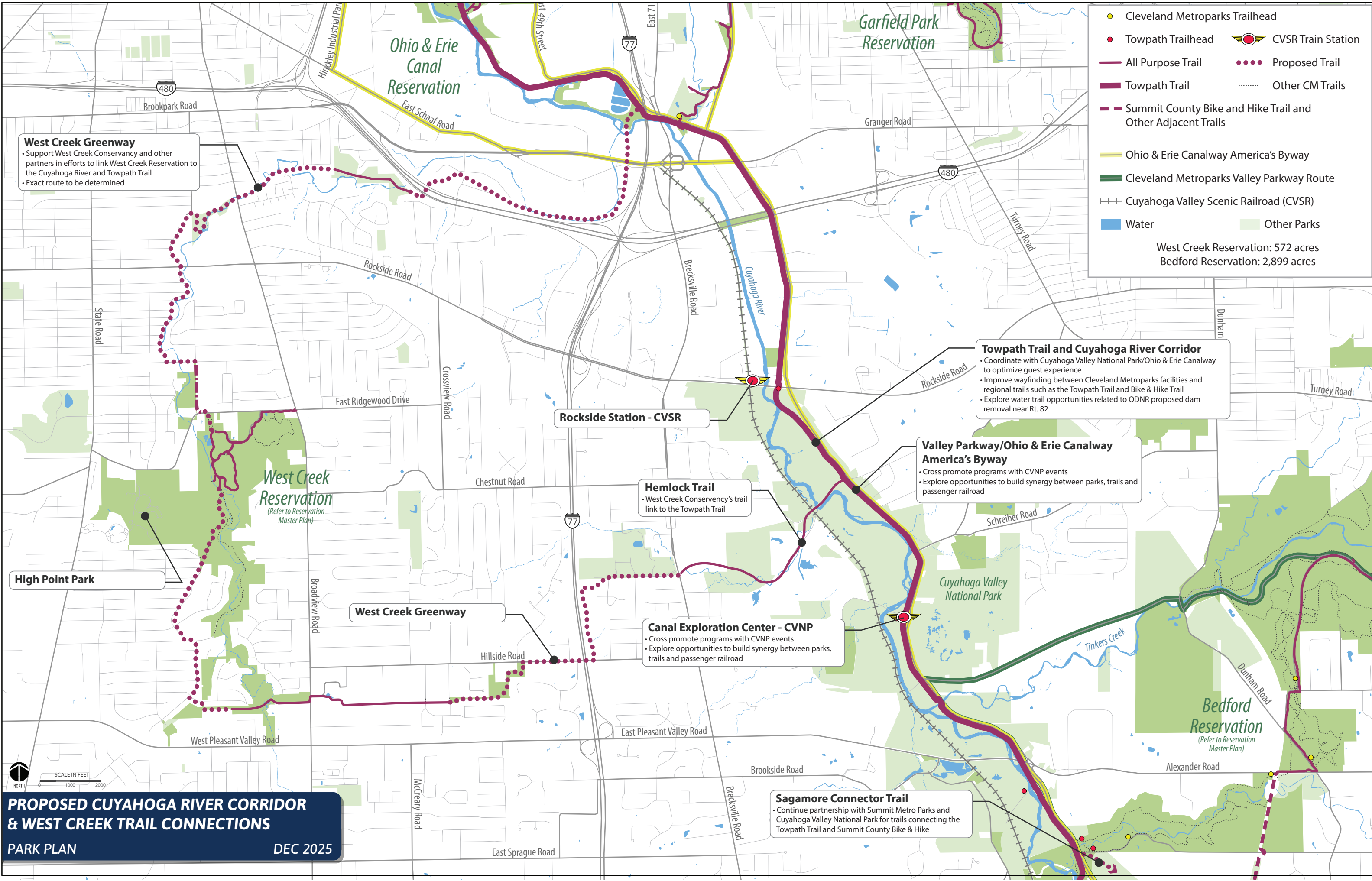
Water

Wetlands

Other Parks

West Creek Reservation: 572 acres

A north arrow pointing upwards and a scale bar marked from 0 to 4,000 feet in increments of 1,000.



West Creek Greenway

- Support West Creek Conservancy and other partners in efforts to link West Creek Reservation to the Cuyahoga River and Towpath Trail
- Exact route to be determined

High Point Park

West Creek Greenway

Rockside Station - CVSR

Hemlock Trail

- West Creek Conservancy's trail link to the Towpath Trail

Canal Exploration Center - CVNP

- Cross promote programs with CVNP events
- Explore opportunities to build synergy between parks, trails and passenger railroad

Valley Parkway/Ohio & Erie Canalway America's Byway

- Cross promote programs with CVNP events
- Explore opportunities to build synergy between parks, trails and passenger railroad

Towpath Trail and Cuyahoga River Corridor

- Coordinate with Cuyahoga Valley National Park/Ohio & Erie Canalway to optimize guest experience
- Improve wayfinding between Cleveland Metroparks facilities and regional trails such as the Towpath Trail and Bike & Hike Trail
- Explore water trail opportunities related to ODNr proposed dam removal near Rt. 82

Sagamore Connector Trail

- Continue partnership with Summit Metro Parks and Cuyahoga Valley National Park for trails connecting the Towpath Trail and Summit County Bike & Hike

Cleveland Metroparks Trailhead

Towpath Trailhead

All Purpose Trail

Towpath Trail

Summit County Bike and Hike Trail and Other Adjacent Trails

Ohio & Erie Canalway America's Byway

Cleveland Metroparks Valley Parkway Route

Cuyahoga Valley Scenic Railroad (CVSR)

Water

CVSR Train Station

Proposed Trail

Other CM Trails

West Creek Reservation: 572 acres

Bedford Reservation: 2,899 acres

NORTH

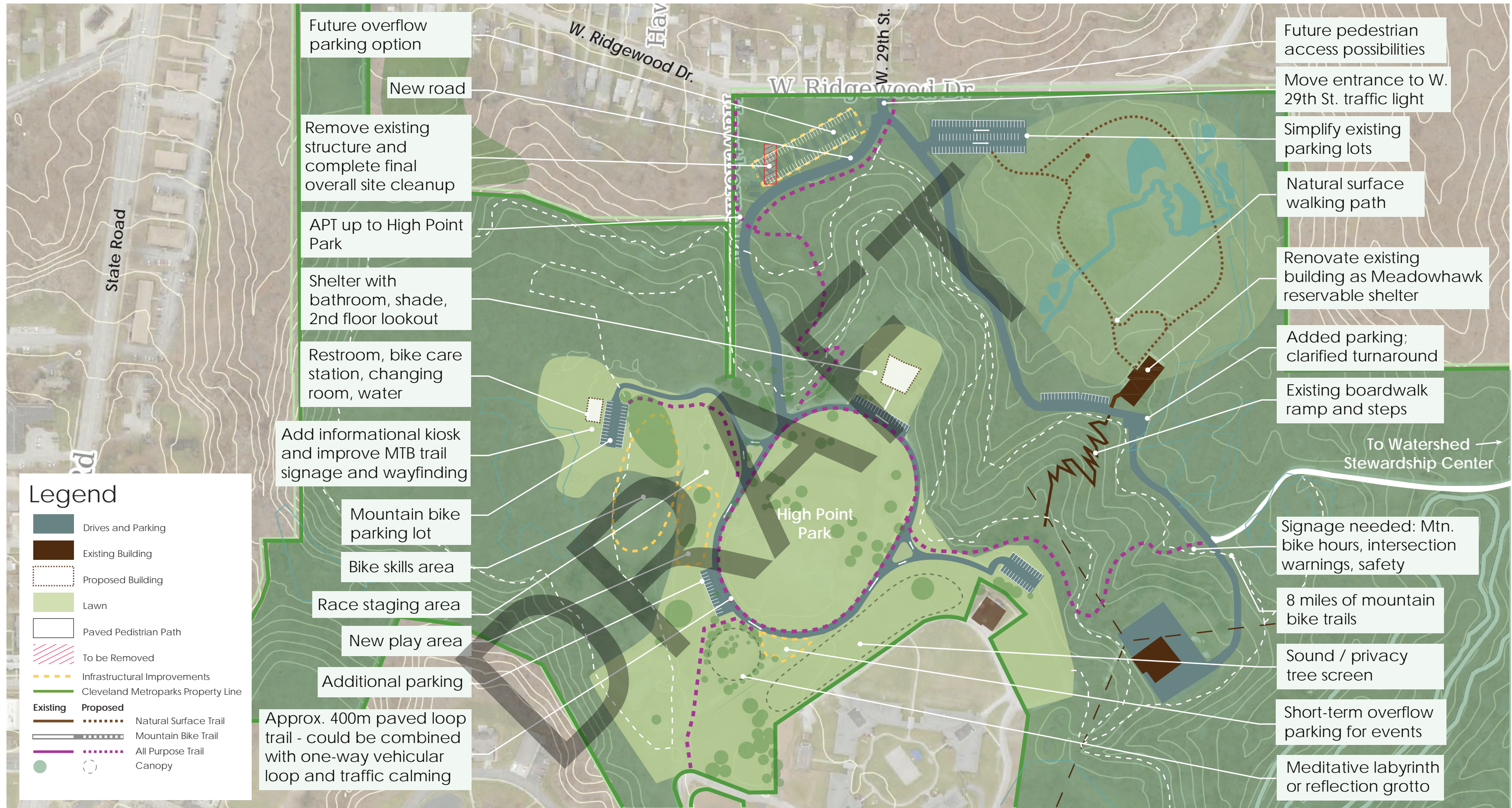
SCALE IN FEET

0 1000 2000

PROPOSED CUYAHOGA RIVER CORRIDOR & WEST CREEK TRAIL CONNECTIONS

PARK PLAN

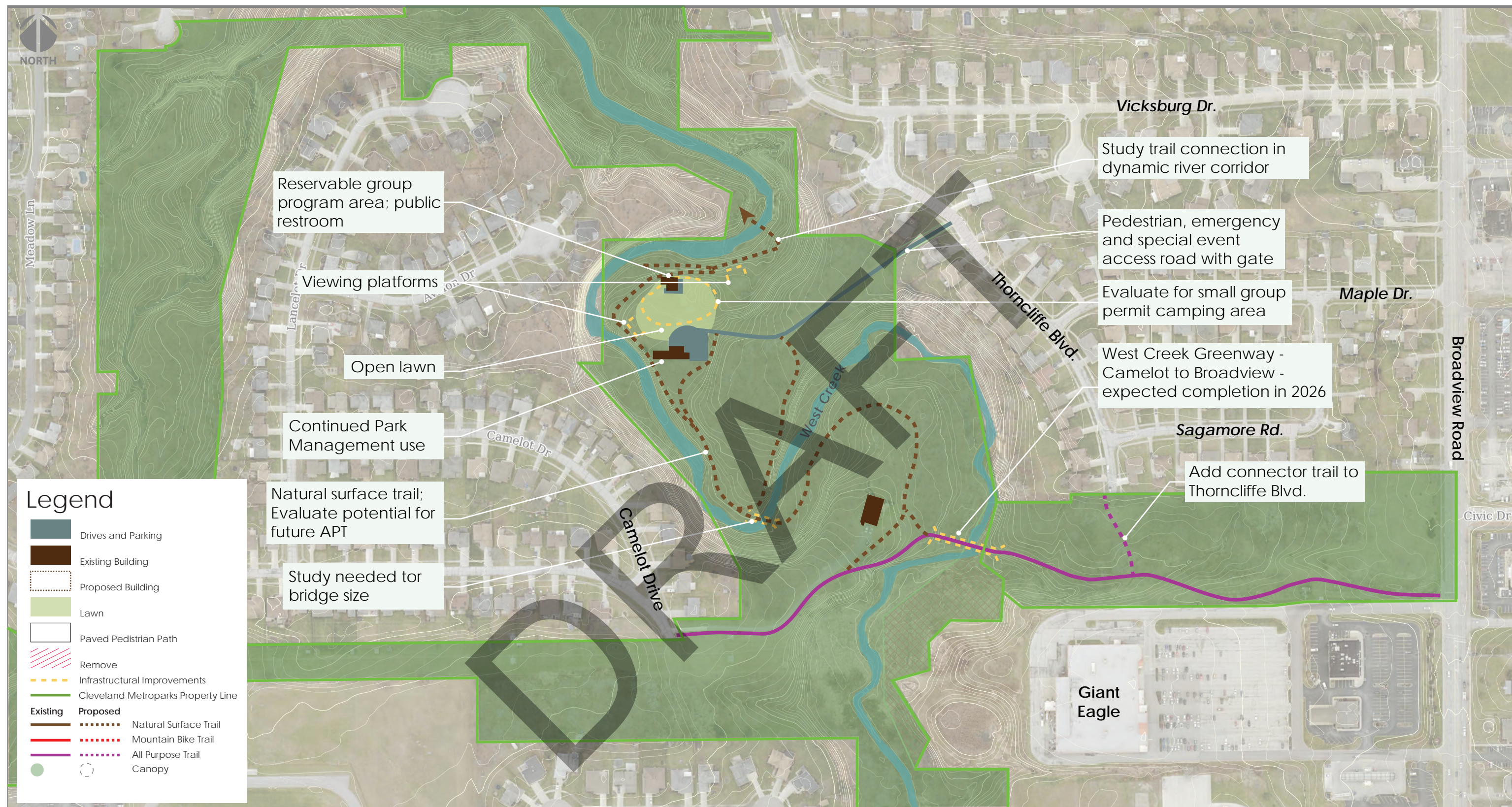
DEC 2025



High Point Park Concept

December 2025





Turkey Turns (Mueller) Picnic Area Concept

December 2025

