

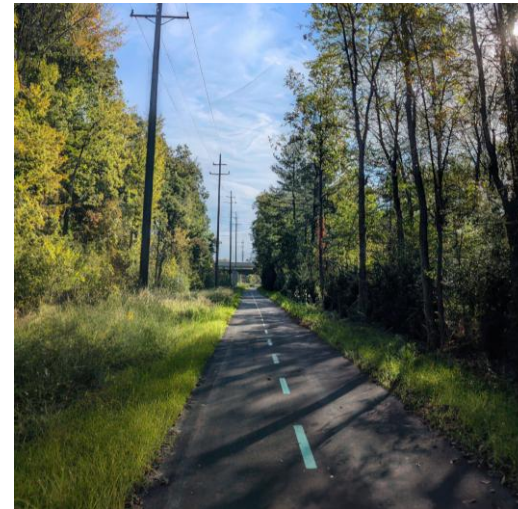


Cleveland Metroparks 2025 Real Estate Report



Overview

- Conservation at a Glance
 - 2025 Real Estate Summary
- Our Year's Work
 - City of Cleveland Properties
 - Trail Connections
 - West Creek Conservancy Partnership
 - Bradley Wood Strategic Acquisitions
- Conservation by the Numbers
 - Reservation, County, Community, Watershed
- Columbus Road Peninsula
 - Riverfront Development Partnership
- Land Stewardship
 - Program Updates & Highlights
 - 2025 Stewardship Season Summary
 - Encroachment Identification & Resolutions



Conservation at a Glance

OUR IMPACT IN NUMBERS

1. Daft, Warren, Zola - Bradley Woods
2. Fairview Hospital - Rocky River
3. West Creek Conservancy (WCC) - West Creek
4. City of Garfield Heights - Garfield Park
5. City of Cleveland - Garfield Park
6. City of Cleveland, CCLRC, Mabel, Nio Phoenix - Washington
7. Kingfisher Harbor, LLC - Ohio & Erie Canal
8. City of Cleveland, GCRTA, WCC, Riverbed LLC - Lakefront
9. U.S. Department of Army - Lakefront
10. City of Cleveland North Coast Harbor - Lakefront
11. WRLC (EBMHC LLC) - Euclid Creek
12. Village of Glenwillow - South Chagrin
13. WCC - South Chagrin
14. City of Solon - South Chagrin



Our Year's Work

LAND PROTECTION

Current Acreage: **25,418**

Acres Acquired: **68**

Acres Donated: **30** (44%)

Transactions: **31**

Reservations: **9**

Communities: **6**

Counties: **1**

Land Purchased: **\$6,257,100**

Grants: **\$5,820,504** (93%)

Cleveland Metroparks Funds: **\$436,596**

Trail Projects: **6**

Feet of Streams: **641**

Feet of Rivers: **4,927**

Acres of Wetlands: **1**

Acres of Forest: **6.5**

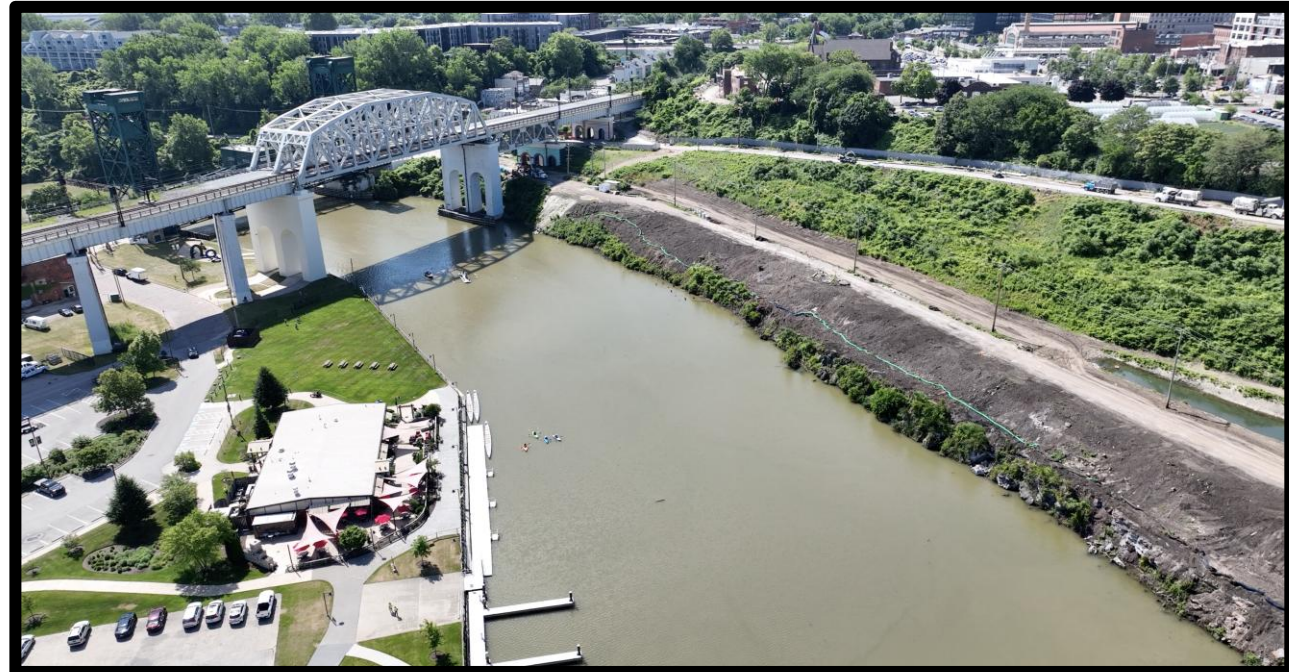
Miles of Trails: **3.8**



Our Year's Work

LAND PROTECTION

- Seventy percent of the newly acquired acreage lies within the City of Cleveland
- Partnerships with West Creek Conservancy (WCC), Western Reserve Land Conservancy (WRLC), Cuyahoga County Land Reutilization Corporation (CCLRC), and the City of Cleveland Land Bank
- Land was acquired for improved trail connections through various lease and management agreements enabling the development of 6 trail projects
- Notable acquisition included the addition of the WRLC property, which added 28.8 acres to the lakefront section of Euclid Creek Reservation.



Our Year's Work

EBMHC LLC - Western Reserve Land Conservancy (28.8 Acres) Euclid Creek Reservation

- One of the few remaining lakefront parcels of its size in the City of Cleveland, nearly fully surrounded by Euclid Creek Reservation
- Clean Ohio Conservation Grant (\$5,020,504) with WRLC providing \$800,000 towards the purchase price for a total of \$5,820,504
- Preservation and restoration of the property, providing high-quality greenspace along Cleveland's lakefront



Our Year's Work

City of Cleveland Properties

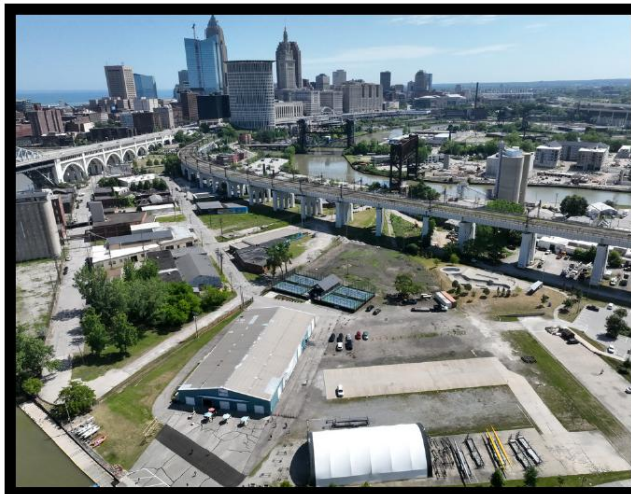
Department of the Army (0.8 Acres) Lakefront Reservation

- \$6.9 million in repairs to pier
- Connects Wendy Park to the former U.S. Coast Guard Station
- Improved 1,320 ft of the 1,430-foot pier with concrete overlay
- CM installed fencing and future utility connections



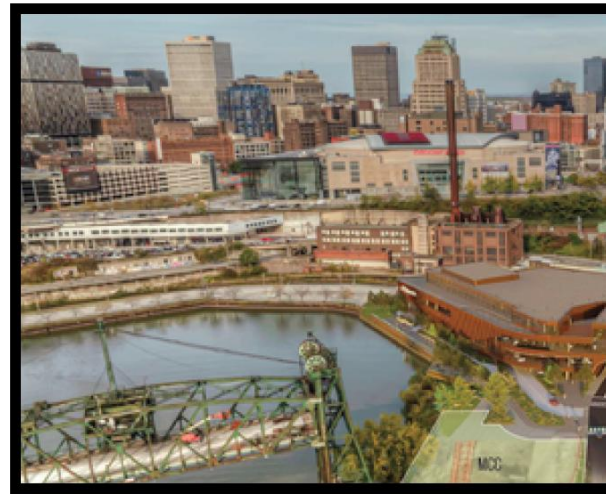
Greater Cleveland Regional Transit Authority (1.4 Acres) Lakefront Reservation

- Columbus Road Peninsula
- Expands upon Rivergate Park & City of Cleveland's Crooked River Skate Park
- Viaduct Bridge spans the property 80' above



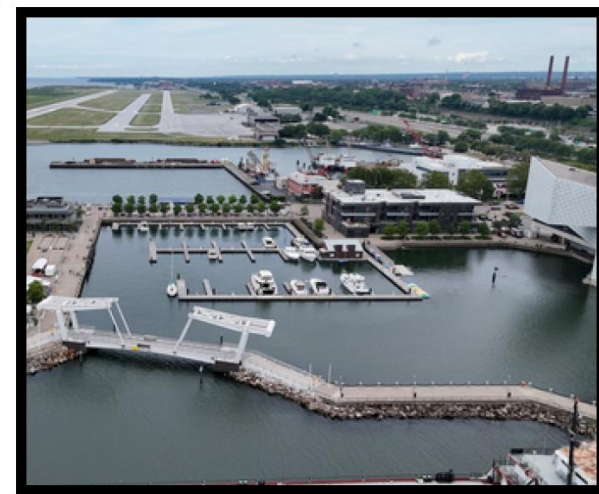
Kingfisher Harbor (1.0 Acres) Ohio & Erie Canal Reservation

- Kingfisher Harbor was awarded an appropriation from ODNR (\$2,000,000) for construction of a public riverfront
- Cleveland Metroparks will ensure that the property will be open to the public.



City of Cleveland North Coast Harbor (6.2 Acres) Lakefront Reservation

- 7th Lakefront Lease Amend.
- Cleveland Metroparks will assume operations of North Coast Harbor Marina under the initial 99-year term
- Marina includes 53 boat slips



Our Year's Work

City of Cleveland Properties

City of Cleveland Land Bank (1.6 Acres)
Garfield Park & Washington Reservations



Nio Phoenix LLC (0.04 Acres)
Washington Reservation



Mabel Property LLC (0.1 Acres)
Washington Reservation



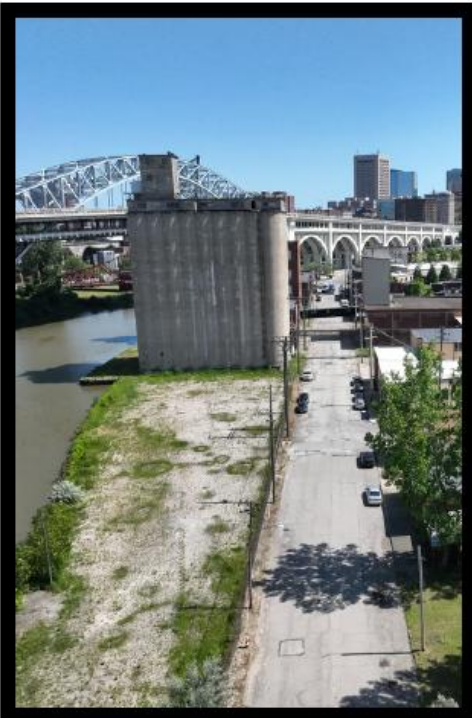
CCLRC (0.3 Acres)
Washington Reservation



Our Year's Work

Trail Connections - Cleveland

City of Cleveland
Rivergate Riverfront Trail (0.2 Acres)
Lakefront Reservation



West Creek Conservancy (Riverbed LLCs)
Irishtown Bend (5.2 Acres)
Lakefront Reservation



Fairview Hospital
Old Lorain Rd Connector (0.6 Acres)
Rocky River Reservation



Our Year's Work

Trail Connections

Village of Glenwillow
Richmond Road Connector (0.5 acres)
South Chagrin Reservation



City of Garfield Heights
Garfield Boulevard Connector (2.7 acres)
Garfield Park Reservation



City of Solon
Solon to Chagrin Falls Trail (11.1 Acres)
South Chagrin Reservation



Our Year's Work

West Creek Conservancy Partnership

Masek Property (5.4 Acres), South Chagrin Reservation



Olson Property (0.7 Acres), West Creek Reservation



Our Year's Work

Bradley Woods Strategic Acquisitions

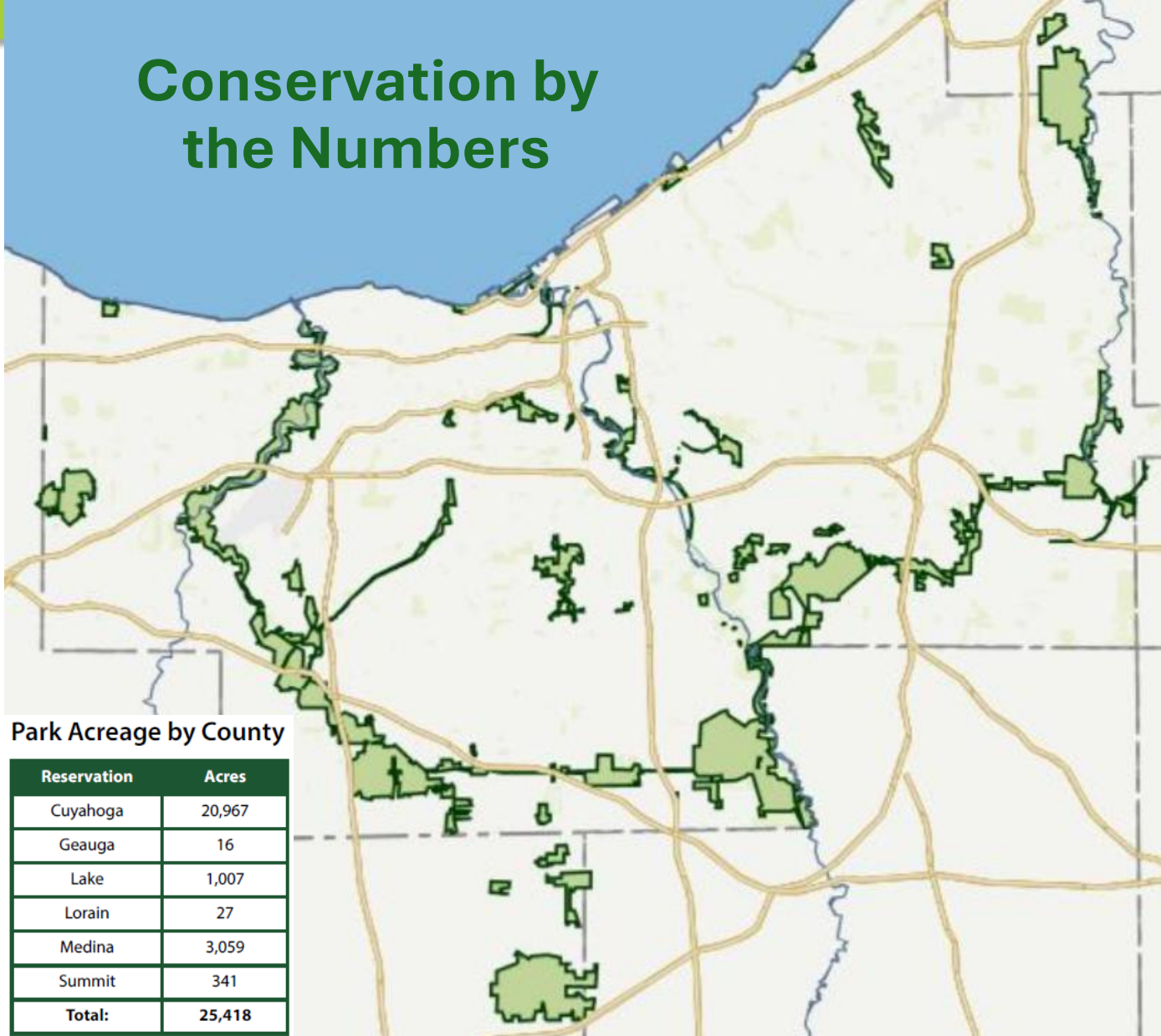
Daft (0.5 acres), Zola (0.25 acres), Warren (0.25 Acres) Bradley Woods Reservation



Reservation Acreage

| Reservation | Acres |
|-------------------|---------------|
| Acacia | 156 |
| Bedford | 2,899 |
| Big Creek | 778 |
| Bradley Woods | 837 |
| Brecksville | 4,342 |
| Brookside | 176 |
| Euclid Creek | 590 |
| Garfield Park | 228 |
| Hinckley | 3,238 |
| Huntington | 103 |
| Lakefront | 550 |
| Mill Stream Run | 3,599 |
| North Chagrin | 2,189 |
| Ohio & Erie Canal | 406 |
| Rocky River | 2,585 |
| South Chagrin | 1,921 |
| Washington | 70 |
| West Creek | 573 |
| Zoo | 180 |
| Total: | 25,418 |

Conservation by the Numbers



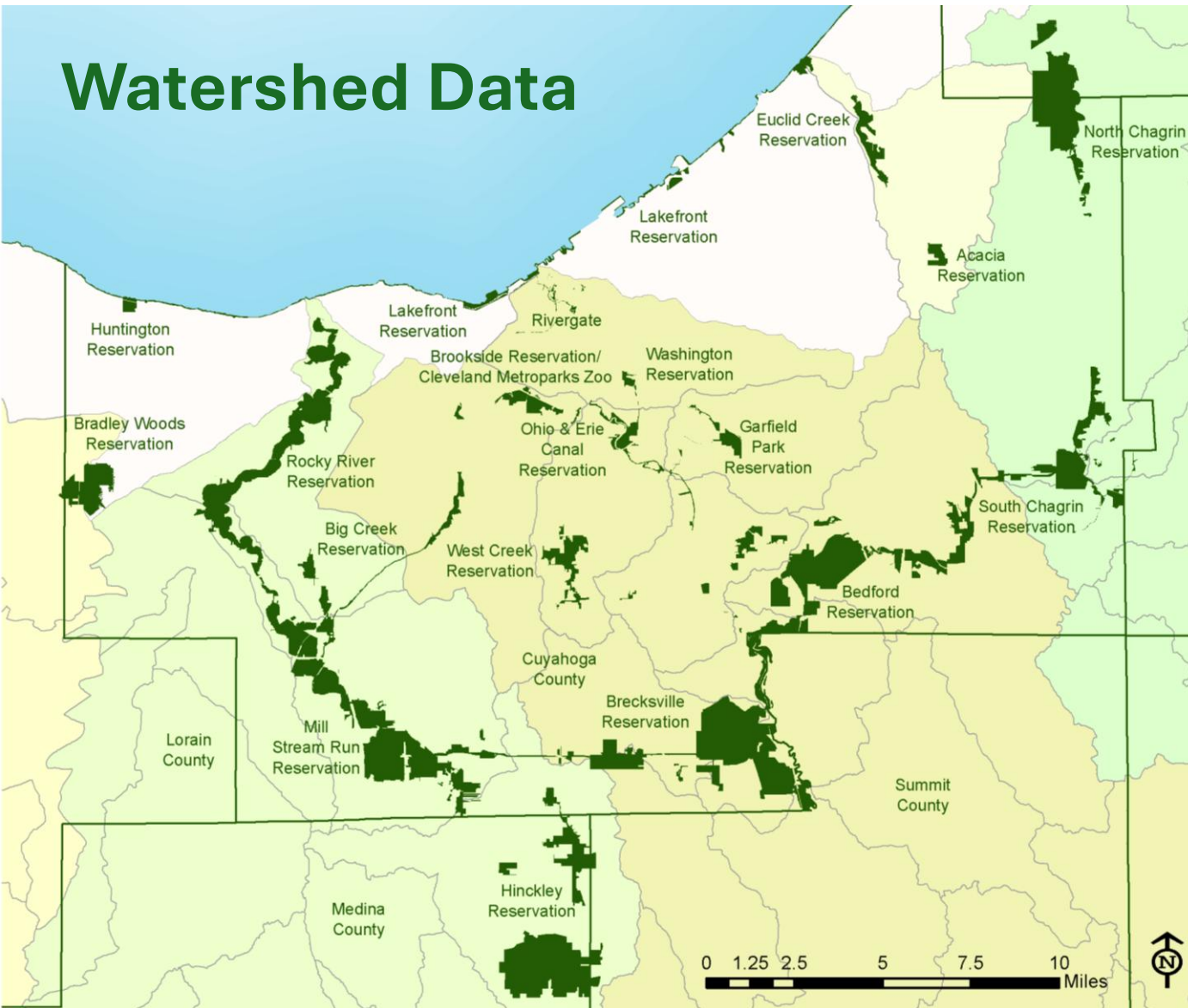
Park Acreage by County

| Reservation | Acres |
|---------------|---------------|
| Cuyahoga | 20,967 |
| Geauga | 16 |
| Lake | 1,007 |
| Lorain | 27 |
| Medina | 3,059 |
| Summit | 341 |
| Total: | 25,418 |

Park Acreage by Community

| Community | Acres | Community | Acres |
|--------------------|-------|---------------------|---------------|
| Bainbridge Twp. | 16 | Maple Hts. | 75 |
| Bay Village | 103 | Mayfield Village | 633 |
| Bedford | 1,087 | Middleburg Hts. | 644 |
| Bedford Hts. | 195 | Moreland Hills | 391 |
| Bentleyville | 746 | Newburgh Hts. | 39 |
| Berea | 383 | North Olmsted | 767 |
| Brecksville | 3,440 | North Ridgeville | 27 |
| Broadview Hts. | 396 | North Royalton | 1,204 |
| Brook Park | 259 | Oakwood | 63 |
| Brooklyn | 37 | Olmsted Twp. | 196 |
| Brooklyn Hts. | 35 | Parma | 645 |
| Chagrin Falls | 8 | Parma Hts. | 137 |
| Chagrin Falls Twp. | 38 | Richfield Twp. | 179 |
| Cleveland | 1,854 | Richmond Hts. | 81 |
| Cuyahoga Hts. | 248 | Rocky River | 49 |
| Euclid | 278 | Sagamore Hills Twp. | 162 |
| Fairview Park | 681 | Seven Hills | 12 |
| Garfield Hts. | 257 | Solon | 715 |
| Gates Mills | 547 | South Euclid | 78 |
| Glenwillow | 5 | Strongsville | 2,347 |
| Hinckley Twp. | 3,059 | Valley View | 297 |
| Hunting Valley | 3 | Walton Hills | 1,195 |
| Independence | 56 | Westlake | 411 |
| Lakewood | 177 | Willoughby Hills | 1,007 |
| Lyndhurst | 156 | Total: | 25,418 |

Watershed Data



| Reservation | Watershed | Acres |
|-------------------|-----------------|---------------|
| Acacia | Euclid Creek | 156 |
| Bedford | Cuyahoga River | 2,899 |
| Big Creek | Cuyahoga River | 261 |
| | Rocky River | 517 |
| Bradley Woods | Black River | 449 |
| | Lake Erie Tribs | 388 |
| Brecksville | Cuyahoga River | 3,989 |
| | Rocky River | 353 |
| Brookside | Cuyahoga River | 176 |
| Euclid Creek | Euclid Creek | 508 |
| | Lake Erie Tribs | 82 |
| Garfield Park | Cuyahoga River | 228 |
| Hinckley | Rocky River | 3,238 |
| Huntington | Lake Erie Tribs | 103 |
| Lakefront | Cuyahoga River | 30 |
| | Lake Erie Tribs | 520 |
| Mill Stream Run | Rocky River | 3,599 |
| North Chagrin | Chagrin River | 2,189 |
| Ohio & Erie Canal | Cuyahoga River | 406 |
| Rocky River | Rocky River | 2,585 |
| South Chagrin | Chagrin River | 1,379 |
| | Cuyahoga River | 542 |
| Washington | Cuyahoga River | 70 |
| West Creek | Cuyahoga River | 573 |
| Zoo | Cuyahoga River | 180 |
| Total: | | 25,418 |

| Watershed | Reservation | Acres |
|-----------------|-------------------|---------------|
| Black River | Bradley Woods | 449 |
| (449 acres) | | |
| Chagrin River | North Chagrin | 2,189 |
| (3,568 acres) | South Chagrin | 1,379 |
| Cuyahoga River | Bedford | 2,899 |
| (9,354 acres) | Big Creek | 261 |
| | Brecksville | 3,989 |
| | Brookside | 176 |
| | Garfield Park | 228 |
| | Lakefront | 30 |
| | Ohio & Erie Canal | 406 |
| | South Chagrin | 542 |
| | Washington | 70 |
| | West Creek | 573 |
| | Zoo | 180 |
| Euclid Creek | Acacia | 156 |
| (664 acres) | Euclid Creek | 508 |
| Lake Erie Tribs | Bradley Woods | 388 |
| (1,093 acres) | Euclid Creek | 82 |
| | Huntington | 103 |
| | Lakefront | 520 |
| Rocky River | Big Creek | 517 |
| (10,292 acres) | Brecksville | 353 |
| | Hinckley | 3,238 |
| | Mill Stream Run | 3,599 |
| | Rocky River | 2,585 |
| Total: | | 25,418 |

Columbus Road Peninsula

Riverfront Development Partnership

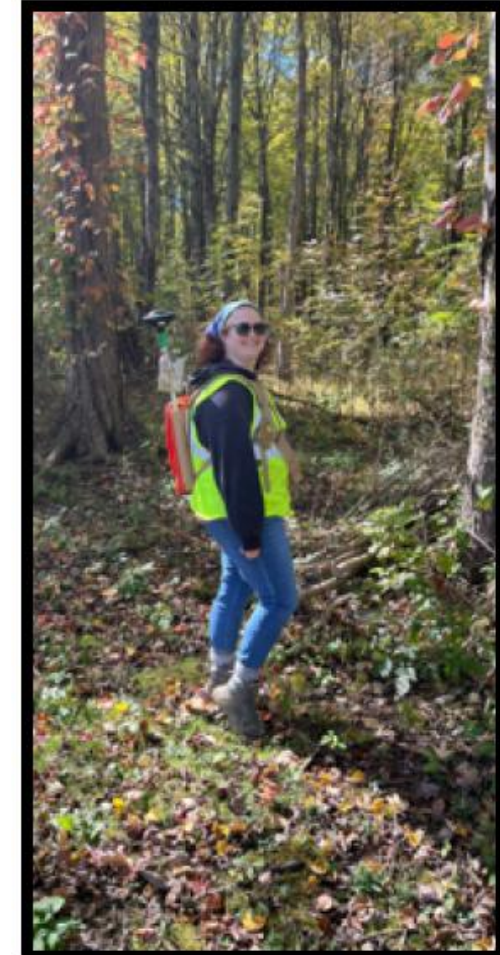
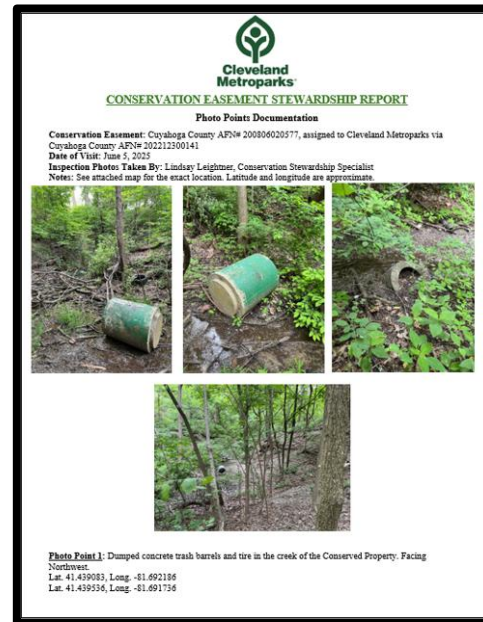
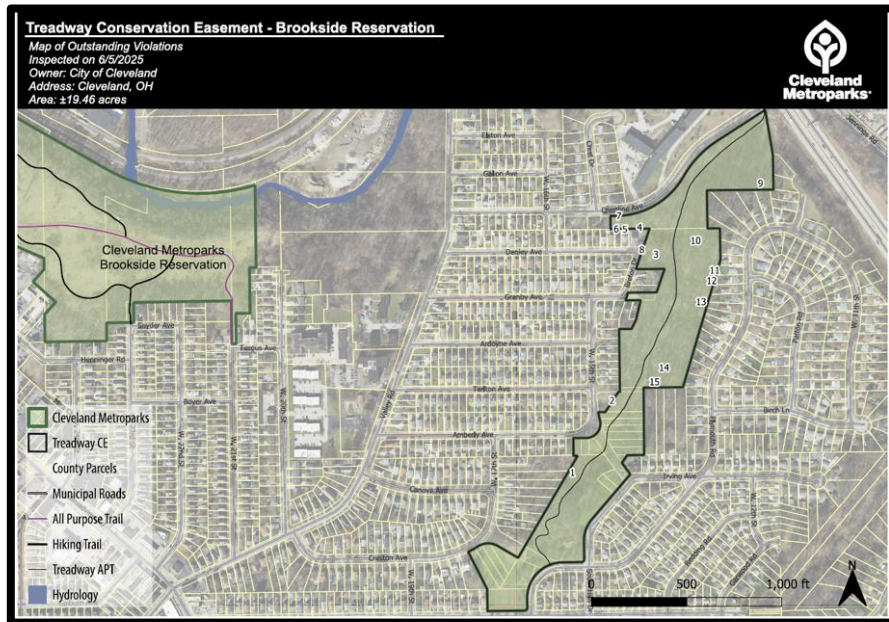
- Cleveland Metroparks entered into a MOU and Lease Agreement with Ceres + LaPine Development (CLD), ODOD awarded CLD \$5,000,000
- Demonstrated a strong understanding of the historic site and the value of providing public access to the Cuyahoga Riverfront



Land Stewardship

Program Updates and Highlights

- Conservation Easement Landowner's Guide
- Park Manager Guide
- License Agreement
- Photo-Point Documentation Report and Map
- Fulcrum Field Applications



Land Stewardship

2025 Stewardship Season Summary

2025 Encroachment Stats

| | |
|--|-----|
| Total Encroaching Properties | 424 |
| Properties Inspected with No Issues Found | 111 |
| Total Properties Inspected | 535 |
| Total Number of Encroachments | 910 |
| Average Number of Encroachment Issues Per Property | 2.1 |

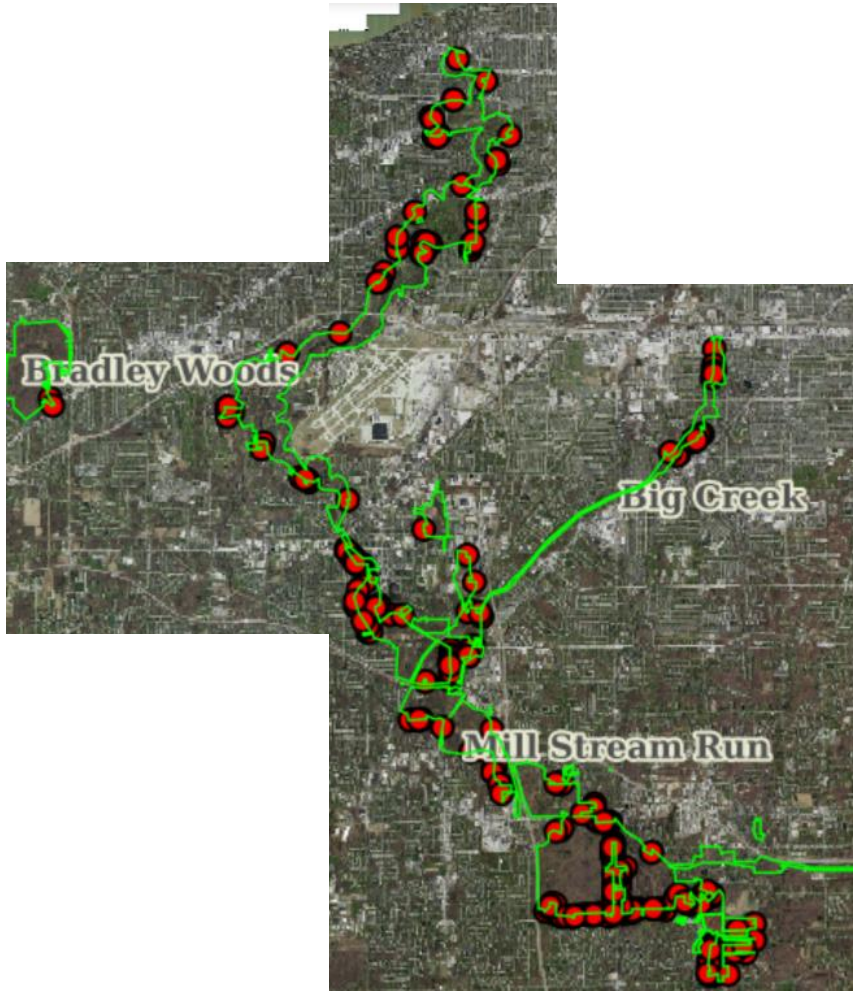


2025 Encroachment Summary

| Encroachment Type | Encroachment Total | Percentage of Total Encroaching Properties |
|---|--------------------|--|
| Organic Dumping | 204 | 48.1% |
| Mowing | 199 | 46.9% |
| Personal Property | 157 | 37.0% |
| Inorganic Dumping | 77 | 18.2% |
| Wood Pile | 41 | 9.7% |
| Trails (Natural Surface, Footpath, Mowed) | 38 | 9.0% |
| Fence | 25 | 5.9% |
| Tree/vegetative cutting | 24 | 5.7% |
| Patio/Deck | 24 | 5.7% |
| Path (Brick or Stone) | 22 | 5.2% |
| Structure (Shed) | 17 | 4.0% |
| Structure (Other) | 16 | 3.8% |
| Play Equipment | 12 | 2.8% |
| Land Clearing | 9 | 2.1% |
| Industrial, Residential or Commercial use | 7 | 1.7% |
| Garden | 7 | 1.7% |
| Paved Path (Driveway/Parking Lot) | 6 | 1.4% |
| Tree Planting | 6 | 1.4% |
| Alteration to Drainage | 5 | 1.2% |
| Agricultural Use | 3 | 0.7% |
| Trails or Roads (For Vehicles/ATV) | 3 | 0.7% |
| Motorized Vehicle Damage | 3 | 0.7% |
| Structure (Garage) | 2 | 0.5% |
| Dredging/Filling/Grading | 1 | 0.2% |
| Pool | 1 | 0.2% |
| Trespass/Vandalism | 1 | 0.2% |

Land Stewardship

Encroachment Identification and Resolutions



Encroachments located on Cleveland Metroparks property (Before Photos)



Encroachments removed from Cleveland Metroparks property through coordination with landowners (After Photos)



Questions?

