

**OVERALL**

- Continue to partner with West Creek Conservancy and others to expand land protection and regional connections
- Work with Trails Development Manager to assess routes and improve sustainability of trail system. Pursue neighborhood connections and remove unsanctioned trails
- Evaluate potential trail routes and types

**WEST CREEK CORRIDOR PLAN**

- Support West Creek Conservancy and other partners in effort to link West Creek Reservation to the Cuyahoga River and Towpath Trail

**WATERSHED STEWARDSHIP CENTER**

- Investigate alternatives for bicycle connectivity along West Ridgewood – roadway width cannot accommodate cyclists
- Continue school and community programming and outreach. Complete upgrades to interpretive displays
- Work with partners to advance phased implementation of West Creek Greenway connections

**MANAGEMENT CENTER**

**KEYSTONE PICNIC AREA AND RESERVABLE SHELTER**

**MONARCH PICNIC AREA**

- Partner for trail connection to the north and eventual link to Cuyahoga River
- Conserve buffer to west if possible

**W RIDGEWOOD DR**

**E. RIDGEWOOD DR**

**MEADOWHAWK LODGE**

- Evaluate renovation needs and potential uses
- Improve parking layout and site circulation

**LOOKOUT RIDGE TRAIL AND WEST RIDGEWOOD WETLAND**

- Work with Parma to improve pedestrian access from surrounding neighborhoods

**CHESTNUT RD**

**BLUEBIRD POINT**

- Promote other trailheads to reduce congestion at peak times
- Continue monitoring landfill cap and vegetation plus antenna structures

**BROADVIEW RD**

**SKINNERS RUN TRAIL**

- Add neighborhood connections and wayfinding
- Pursue stream restoration opportunities and mitigate erosion at bridges
- Designate route(s) and utilize boardwalks to avoid wetland impacts
- Explore potential connections to the south

**HIGH POINT PARK**

- See Area Plan - Improve access road and align with W. Ridgewood at traffic light(W. 29th). Convert loop drive to one way outside lane and trail on inside lane.
- As trail system is completed, promote programs and use as a trailhead. Install restroom, kiosk, and small shelter.

**CENTER PARK AND GREENBRIAR TRAIL**

- Make trailhead more prominent. Add crosswalk(s) to connect to sidewalks
- Add CXT and small cookhouse-type shelter or tent
- City of Parma has issues along Parkview Drive / settlement and erosion at former Crile landfill

**DENTZLER ROAD TRAILHEAD**

- Evaluate long term potential to improve trail accessibility and incorporate drainage improvements
- Explore potential connections to the south

**TURKEY TURNS AREA (FORMER MUELLER PROPERTY)**

- See Area Plan - Add trail connection and group use by permit
- Study feasibility of trail connections to the north

**COVENTRY TO BROADVIEW TRAIL**

- Construct 2025-2026

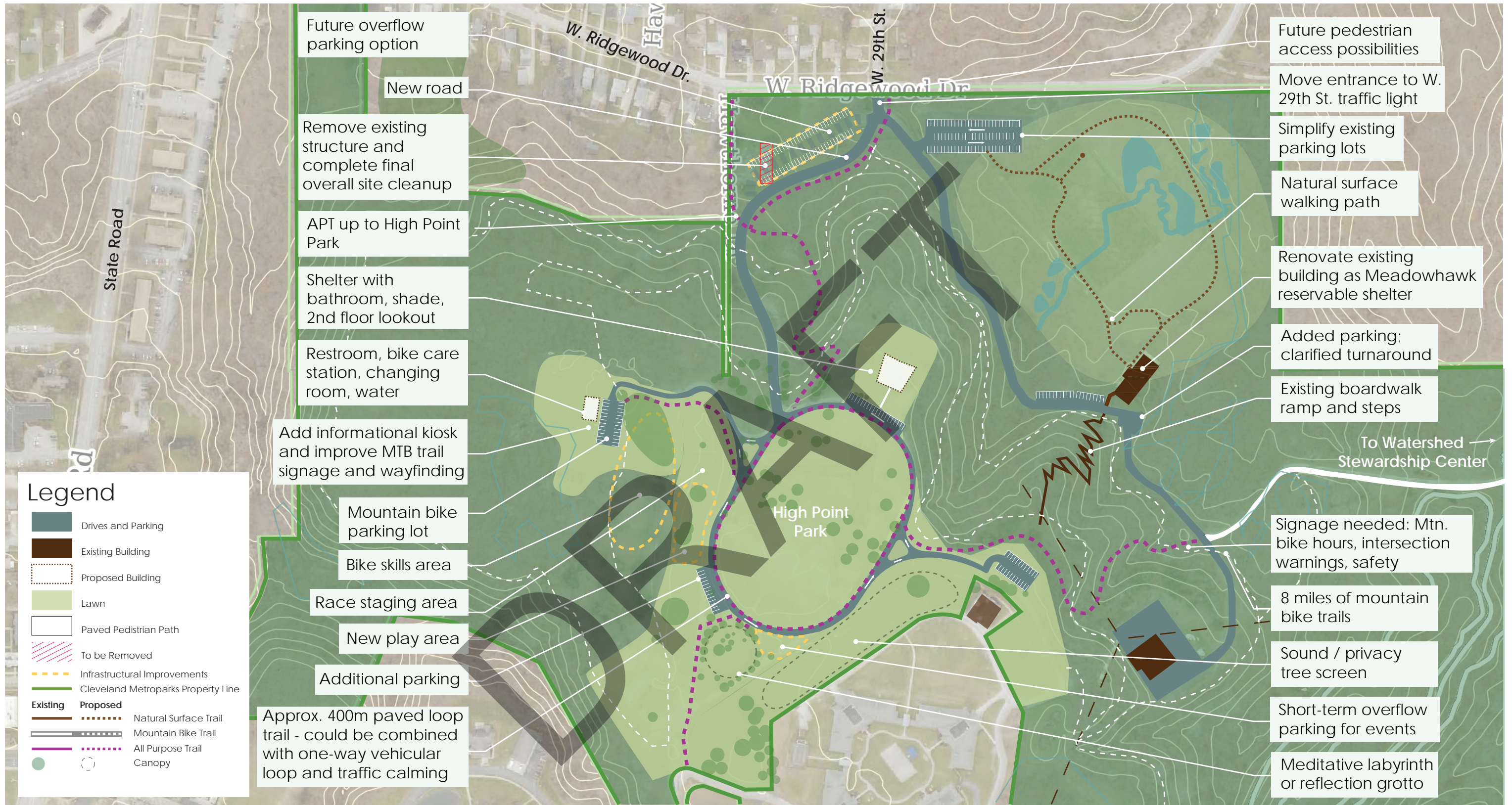
**PLEASANT VALLEY RD**

**HILLSIDE RD**

	All Purpose Trail		Water
	Other Trails		Wetlands
	Proposed Trails		Other Parks
	Land Protection		

West Creek Reservation: 572 acres

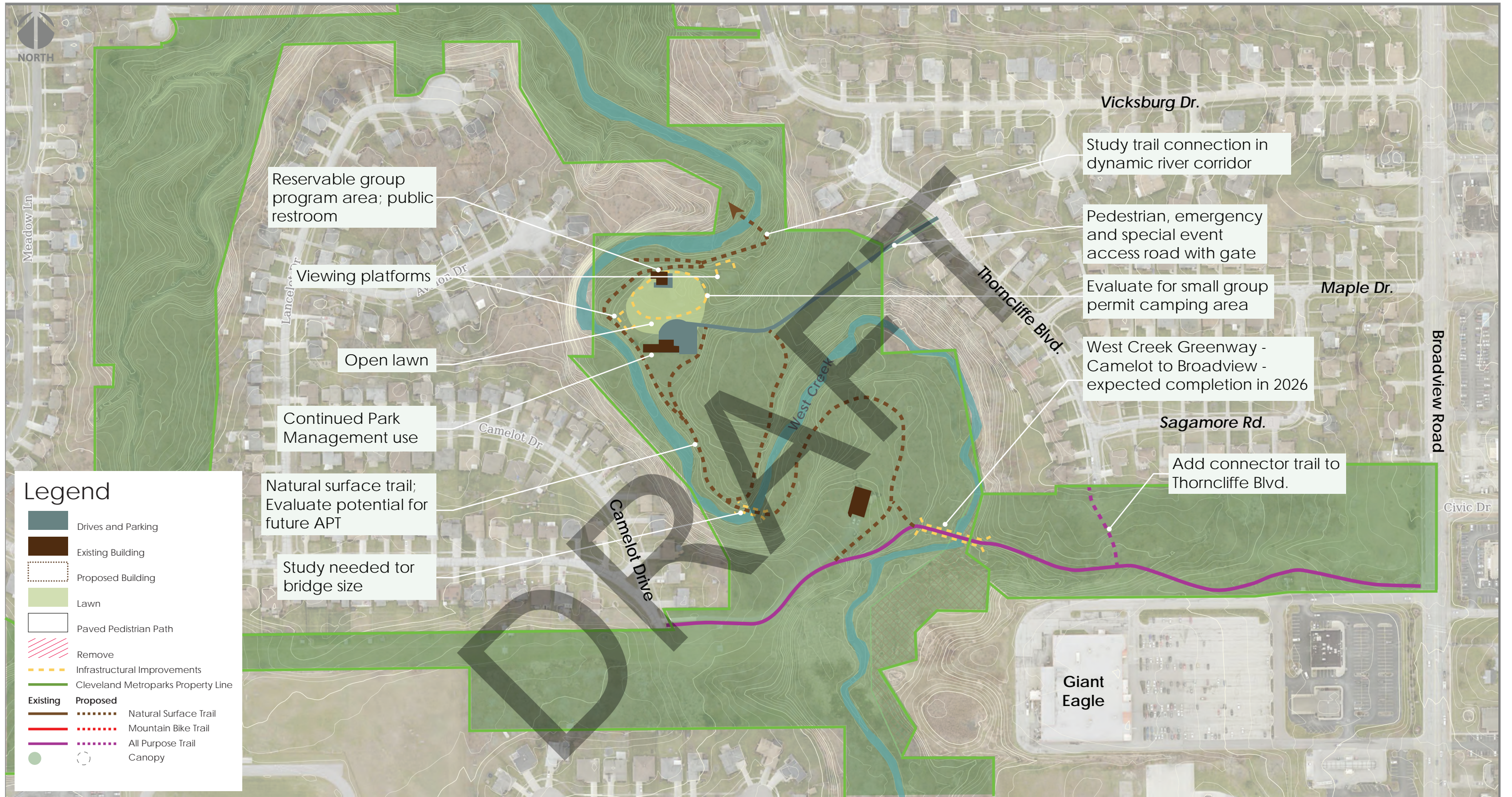
0 1,000 2,000 3,000 4,000 ft



# High Point Park Concept

December 2025





# Turkey Turns (Mueller) Picnic Area Concept

December 2025

